



## How to create a RefWorks account

Go to the Nelliportal through the Åbo Akademi University web page, [www.abo.fi/library](http://www.abo.fi/library), or go straight to the portal: [www.nelliportal.fi/aa](http://www.nelliportal.fi/aa). Type RefWorks into the search box under the **Find database** link and click on “go”.


 Åbo Akademis bibliotek 

Welcome to the NELLI Portal!  
National Electronic Library Interface  
[Instructions for Use](#) | [Select another portal](#)

QuickSearch

Find Database

Using Quick Search you can do simultaneous searches in preselected databases. There is presently only one Quick Search group in our English version "Search Articles". It searches in the biggest and most important databases.

Databases or electronic information resources include search portals, e-journals, e-books, encyclopedia and library open access catalogues. Normally these databases can be searched directly via NELLI . A part of the resources, however, are only hyperlinked. Find a relevant database by title, type or subject. Click on "Find Database" or you could start here by entering a search term - e.g.: Alma, Volter, ebrary, MOT - (truncation mark = ?):



Within NEL the library alphabetic to do a title possible to vendor. Yc My Space. If you like y

GO

RESET

Or use these quick links:

RESET

 Åbo Akademis bibliotek 

QuickSearch

**Find Database**

Find e-Journal

MetaSearch

My Space

Find Database

**Database List**

## Database List

Search for "Word=Refworks" found 1 databases

List Brief Record

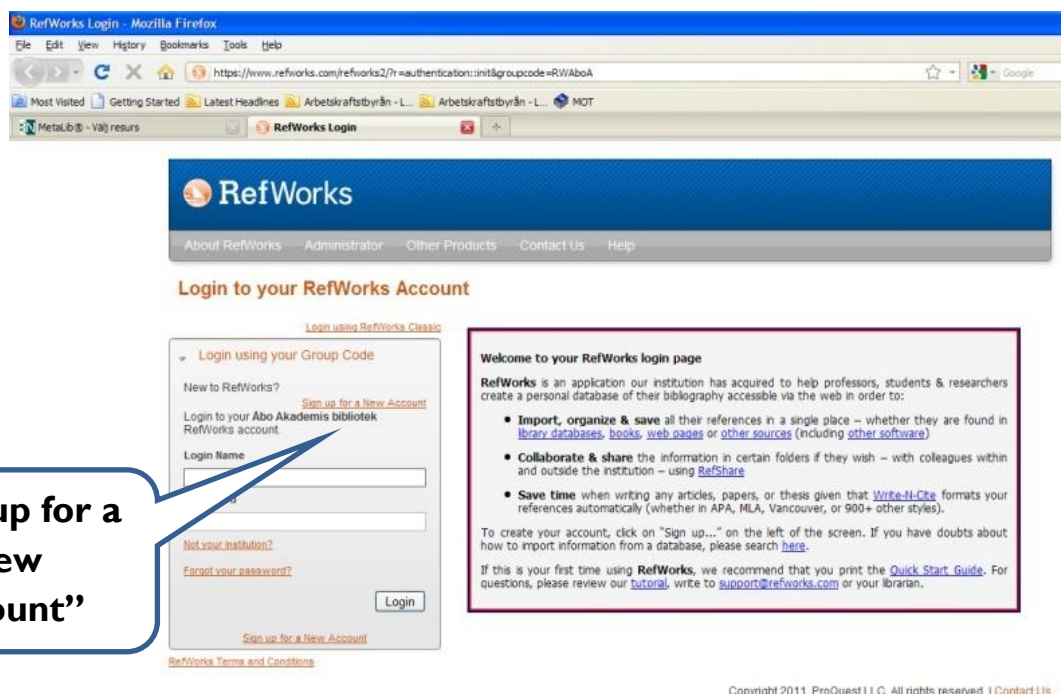
RefWorks - RefWorks

Database Name	Type
<u>RefWorks</u>	Tool

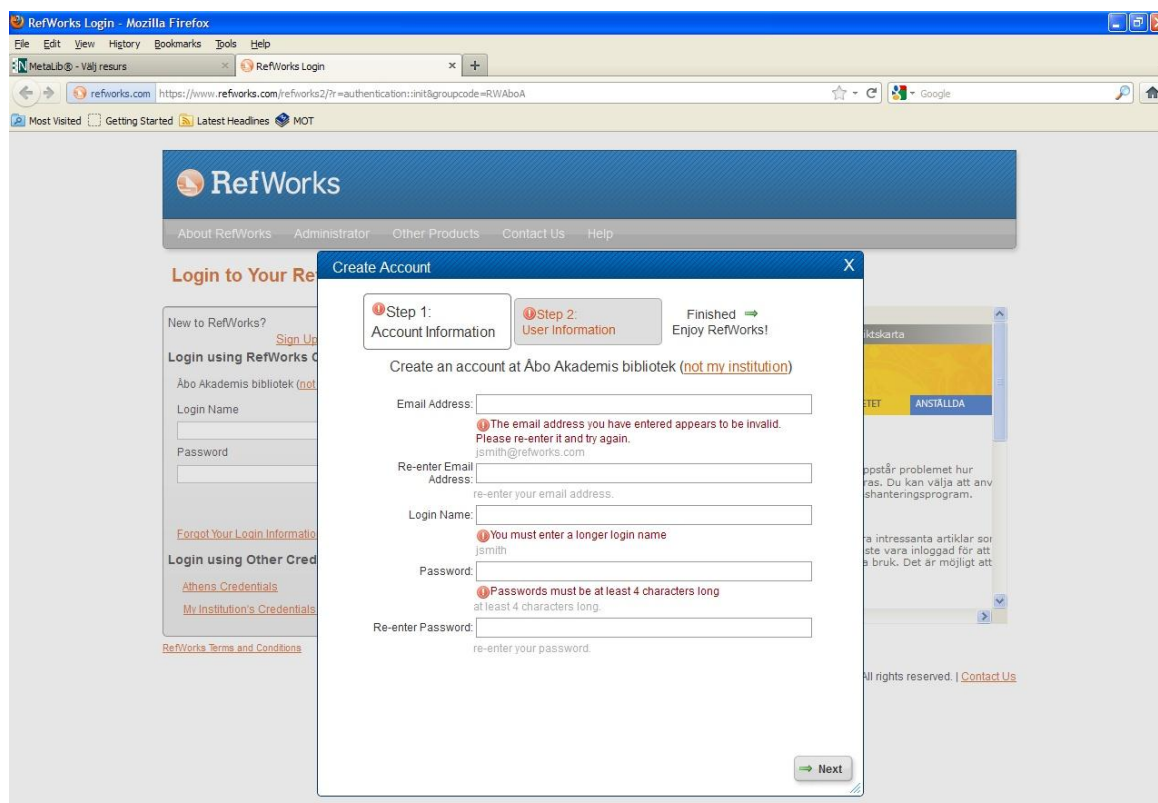
RefWorks - RefWorks

Persistent link to this page <http://www.nelliportal.fi/aa>

Click on the RefWorks link, which will take you to the RefWorks homepage.



Choose **Sign up for a new account**. Fill in the requested information. You may use your Åbo Akademi University user name, but make sure to **choose another password!!**



When you're done, click on **Create account**. You are now ready to start using RefWorks! 😊