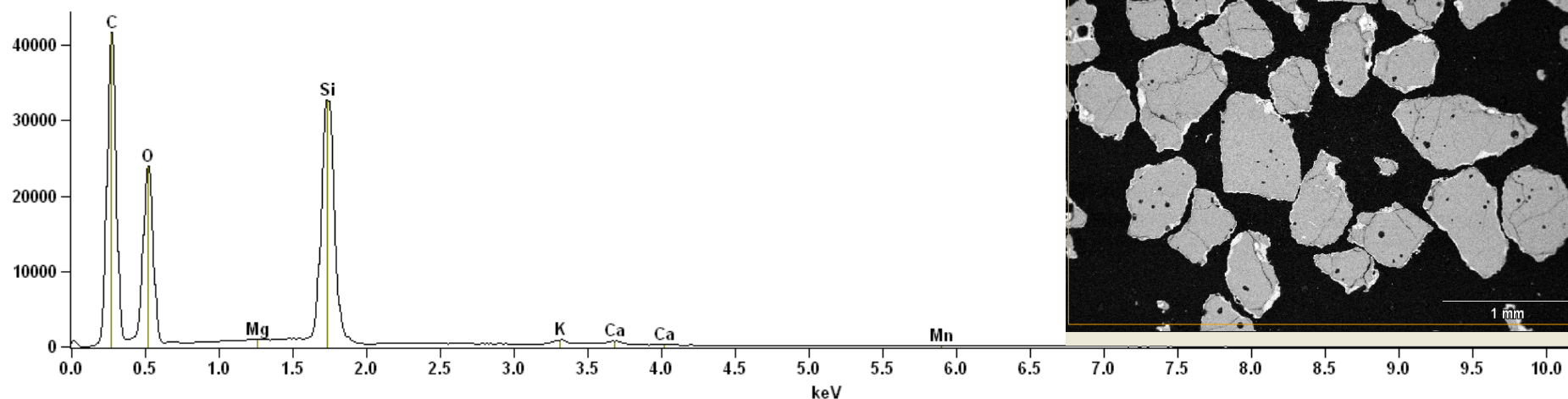
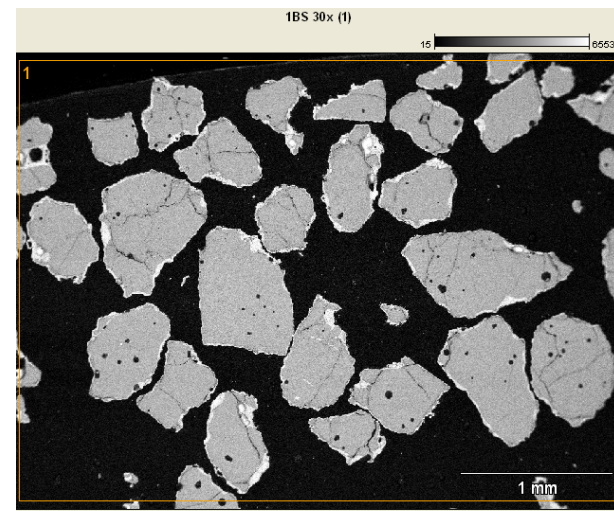


Project: SemÅa mz

Full scale counts: 41584



IBS 30x area01



Live Time:30.0 sec.

Acc.Voltage: 15.0 kV Take Off Angle: 34.7 deg.

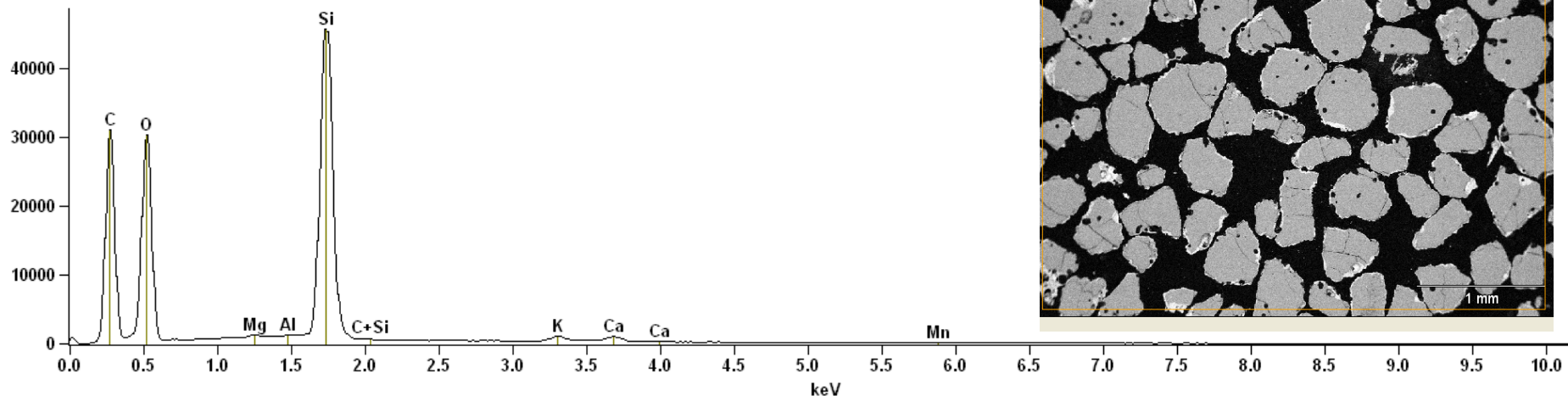
Quantitative Results for: IBS 30x area01

<i>Element Line</i>	<i>Weight %</i>	<i>Weight % Error</i>	<i>Formul a</i>	<i>Compnd %</i>
<i>O K</i>	52.03S	---		---
<i>Mg K</i>	0.26	+/- 0.04	MgO	0.43
<i>Si K</i>	44.74	+/- 0.13	SiO2	95.70
<i>K K</i>	1.39	+/- 0.08	K2O	1.67
<i>Ca K</i>	1.29	+/- 0.09	CaO	1.80
<i>Mn K</i>	0.31	+/- 0.07	MnO	0.40
<i>Total</i>	100.00			100.00

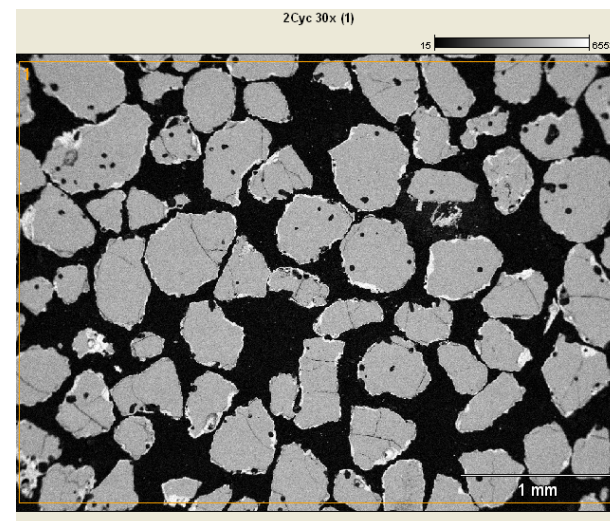
<i>Element Line</i>	<i>Weight %</i>	<i>Weight % Error</i>	<i>Formul a</i>	<i>Compnd %</i>
<i>O K</i>	25.27S	---		---
<i>Mg K</i>	7.31	+/- 1.09	MgO	12.11
<i>K K</i>	29.07	+/- 1.66	K2O	35.01
<i>Ca K</i>	30.94	+/- 2.11	CaO	43.28
<i>Mn K</i>	7.43	+/- 1.80	MnO	9.59
<i>Total</i>	100.00			100.00

Project: SemÅa mz

Full scale counts: 45680



2Cyc 30x area02



Live Time:30.0 sec.

Acc.Voltage: 15.0 kV Take Off Angle: 35.0 deg.

Quantitative Results for: 2Cyc 30x area02

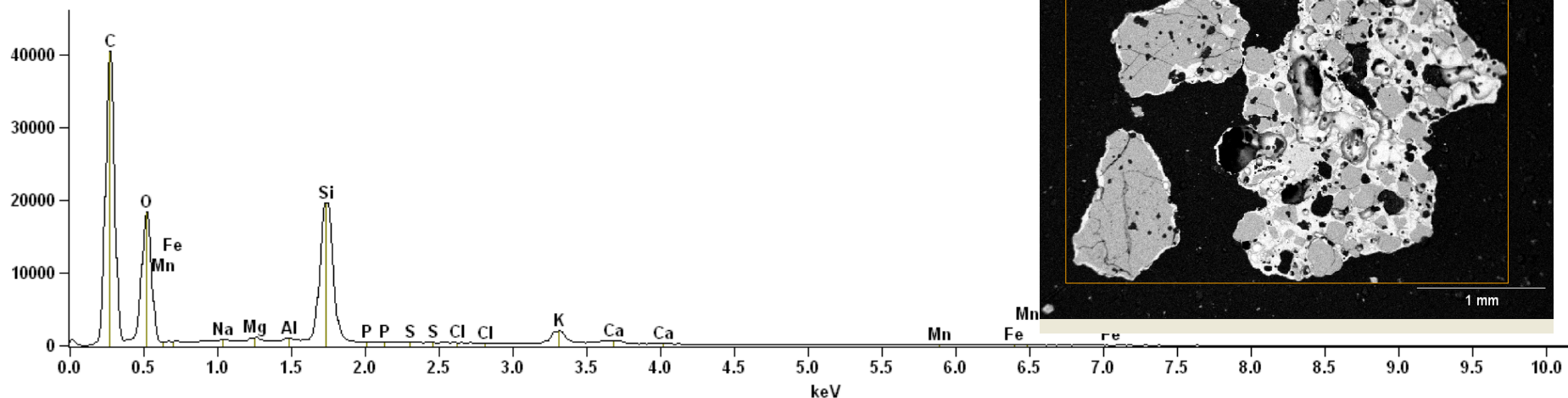
<i>Element Line</i>	<i>Weight %</i>	<i>Weight % Error</i>	<i>Formul a</i>	<i>Compnd %</i>
<i>O K</i>	52.09S	---		---
<i>Mg K</i>	0.31	+/- 0.02	MgO	0.51
<i>Al K</i>	0.07	+/- 0.02	Al2O3	0.13
<i>Si K</i>	44.75	+/- 0.12	SiO2	95.74
<i>K K</i>	1.28	+/- 0.03	K2O	1.54
<i>Ca K</i>	1.26	+/- 0.07	CaO	1.76
<i>Mn K</i>	0.24	+/- 0.06	MnO	0.31
<i>Total</i>	100.00			100.00

<i>Element Line</i>	<i>Weight %</i>	<i>Weight % Error</i>	<i>Formul a</i>	<i>Compnd %</i>
<i>O K</i>	26.64S	---		---
<i>Mg K</i>	8.54	+/- 0.46	MgO	14.17
<i>Al K</i>	2.06	+/- 0.62	Al2O3	3.90
<i>K K</i>	26.89	+/- 0.65	K2O	32.39
<i>Ca K</i>	30.00	+/- 1.64	CaO	41.97
<i>Mn K</i>	5.86	+/- 1.40	MnO	7.57
<i>Total</i>	100.00			100.00

Project: SemÅa mz

Full scale counts: 40409

3BS 30x area03



Live Time:30.0 sec.

Acc.Voltage: 15.0 kV Take Off Angle: 35.0 deg.

<i>Element Line</i>	<i>Weight %</i>	<i>Weight % Error</i>	<i>Formul a</i>	<i>Compnd %</i>
<i>O K</i>	48.23S	---		---
<i>Na K</i>	1.11	+/- 0.10	Na2O	1.50
<i>Mg K</i>	0.83	+/- 0.07	MgO	1.38
<i>Al K</i>	0.50	+/- 0.04	Al2O3	0.95
<i>Si K</i>	38.71	+/- 0.13	SiO2	82.81
<i>P K</i>	0.00	---	P2O5	0.00
<i>S K</i>	0.00	---	SO3	0.00
<i>Cl K</i>	0.05	+/- 0.04	Cl	0.05
<i>K K</i>	7.43	+/- 0.13	K2O	8.94
<i>Ca K</i>	2.41	+/- 0.13	CaO	3.38
<i>Mn K</i>	0.29	+/- 0.10	MnO	0.37
<i>Fe K</i>	0.43	+/- 0.11	Fe2O3	0.62
<i>Total</i>	100.00			100.00

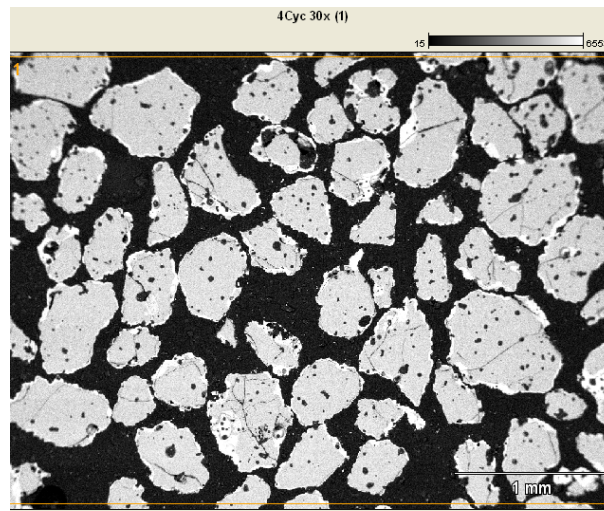
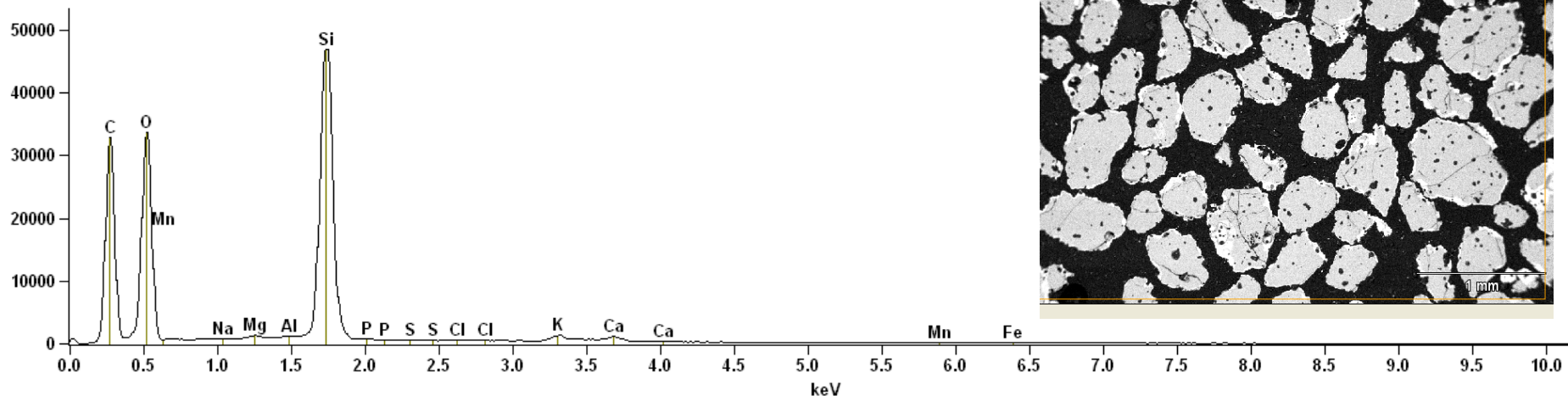
<i>Element Line</i>	<i>Weight %</i>	<i>Weight % Error</i>	<i>Formul a</i>	<i>Compnd %</i>
<i>O K</i>	24.87S	---		---
<i>Na K</i>	7.26	+/- 0.66	Na2O	9.78
<i>Mg K</i>	5.67	+/- 0.45	MgO	9.41
<i>Al K</i>	3.48	+/- 0.29	Al2O3	6.57
<i>P K</i>	0.00	---	P2O5	0.00
<i>S K</i>	0.00	---	SO3	0.00
<i>Cl K</i>	0.26	+/- 0.20	Cl	0.26
<i>K K</i>	39.65	+/- 0.70	K2O	47.76
<i>Ca K</i>	14.60	+/- 0.79	CaO	20.43
<i>Mn K</i>	1.70	+/- 0.59	MnO	2.19
<i>Fe K</i>	2.52	+/- 0.66	Fe2O3	3.60
<i>Total</i>	100.00			100.00

Quantitative Results for: 3BS 30x area03

Project: SemÅa mz

Full scale counts: 46796

4Cyc 30x area04



Live Time:30.0 sec.

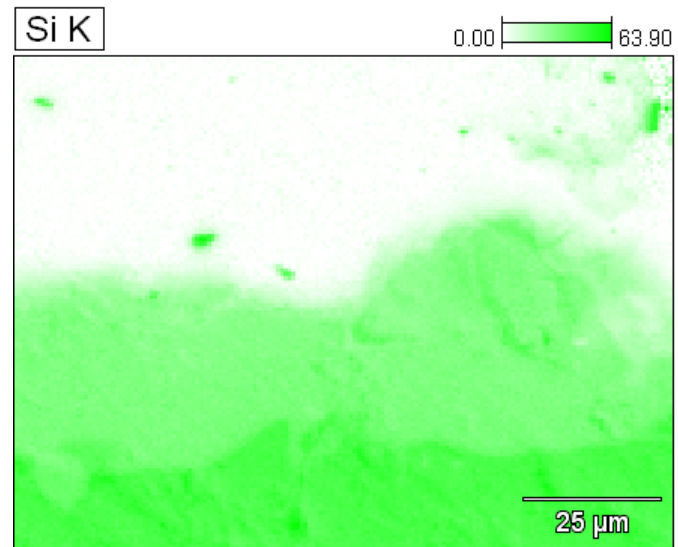
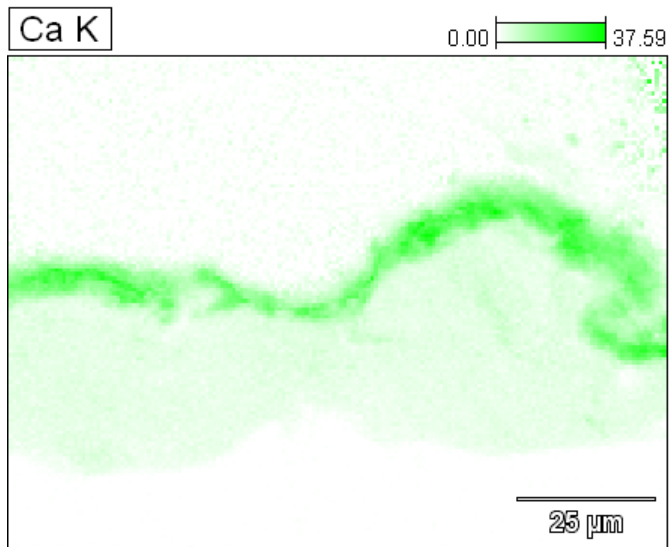
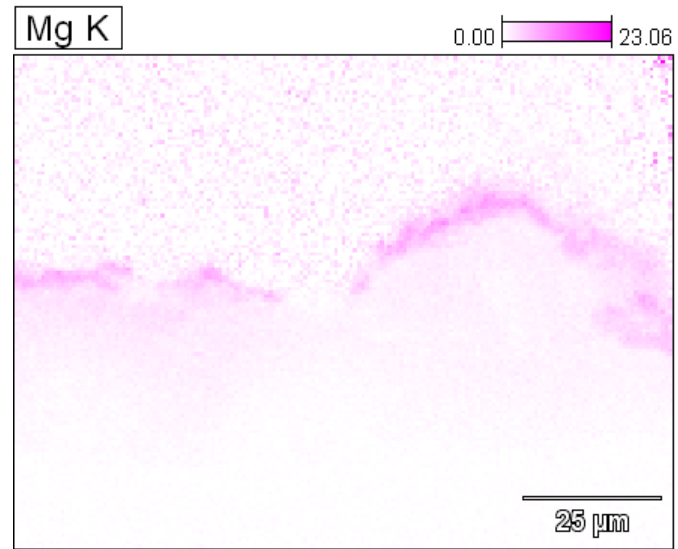
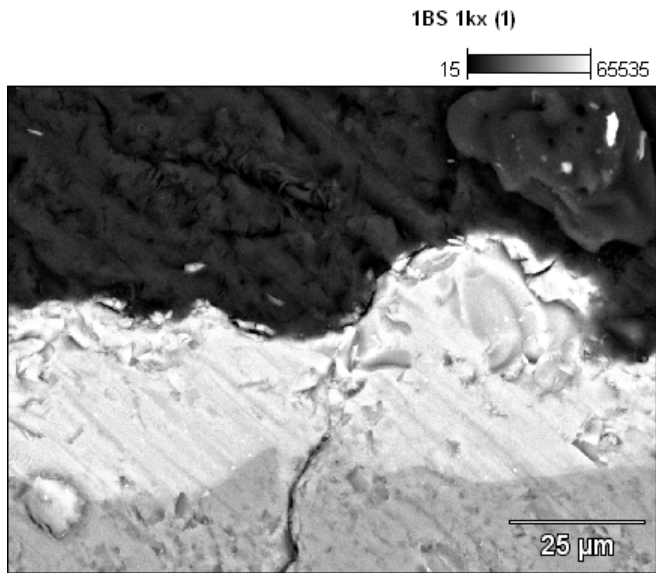
Acc.Voltage: 15.0 kV Take Off Angle: 33.5 deg.

<i>Element Line</i>	<i>Weight %</i>	<i>Weight % Error</i>	<i>Formul a</i>	<i>Compnd %</i>
<i>O K</i>	51.60S	---		---
<i>Na K</i>	0.00	---	Na2O	0.00
<i>Mg K</i>	0.34	+/- 0.03	MgO	0.56
<i>Al K</i>	0.03	+/- 0.02	Al2O3	0.06
<i>Si K</i>	43.77	+/- 0.11	SiO2	93.64
<i>P K</i>	0.19	+/- 0.03	P2O5	0.43
<i>S K</i>	0.01	+/- 0.02	SO3	0.02
<i>Cl K</i>	0.01	+/- 0.02	Cl	0.01
<i>K K</i>	1.89	+/- 0.03	K2O	2.28
<i>Ca K</i>	1.62	+/- 0.07	CaO	2.27
<i>Mn K</i>	0.27	+/- 0.06	MnO	0.35
<i>Fe K</i>	0.27	+/- 0.06	Fe2O3	0.39
Total	100.00			100.00

<i>Element Line</i>	<i>Weight %</i>	<i>Weight % Error</i>	<i>Formul a</i>	<i>Compnd %</i>
<i>O K</i>	27.45S	---		---
<i>Na K</i>	0.00	---	Na2O	0.00
<i>Mg K</i>	6.61	+/- 0.60	MgO	10.96
<i>Al K</i>	0.60	+/- 0.44	Al2O3	1.13
<i>P K</i>	2.33	+/- 0.37	P2O5	5.34
<i>S K</i>	0.10	+/- 0.31	SO3	0.25
<i>Cl K</i>	0.09	+/- 0.31	Cl	0.09
<i>K K</i>	27.35	+/- 0.47	K2O	32.94
<i>Ca K</i>	26.63	+/- 1.15	CaO	37.26
<i>Mn K</i>	4.44	+/- 0.93	MnO	5.74
<i>Fe K</i>	4.39	+/- 1.00	Fe2O3	6.28
Total	100.00			100.00

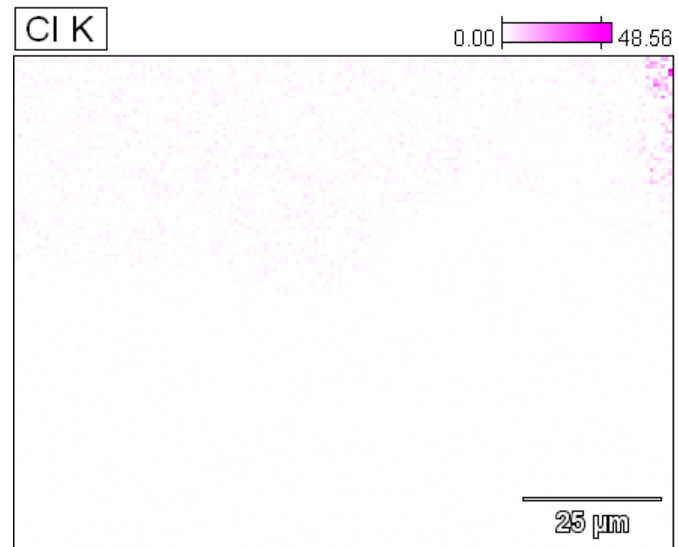
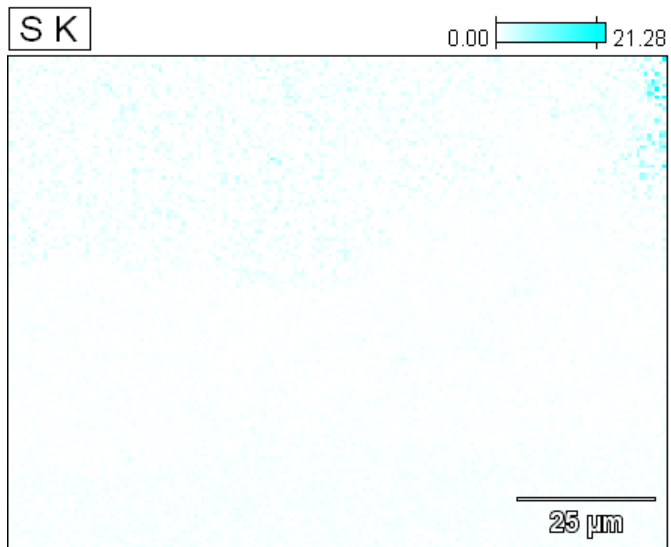
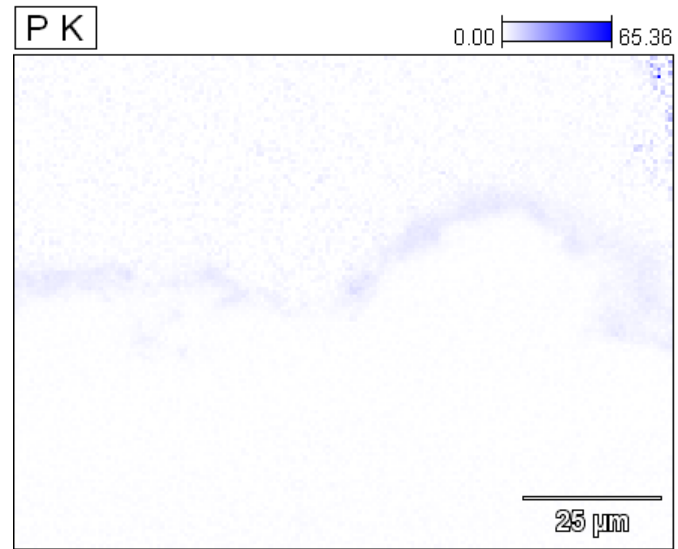
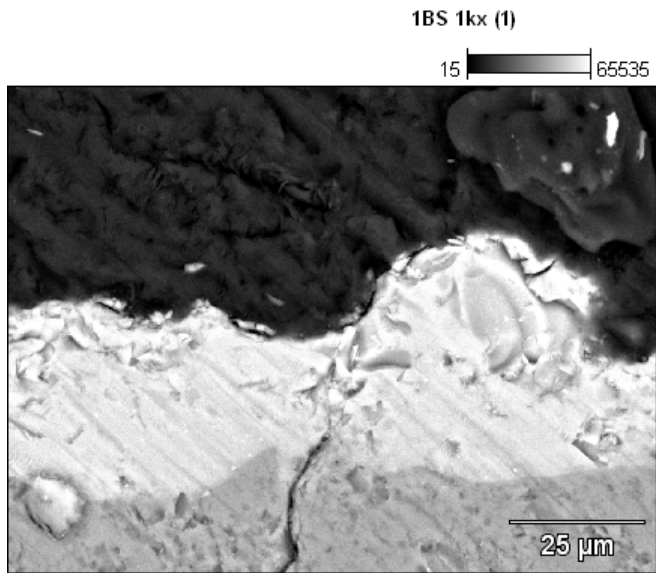
Quantitative Results for: 4Cyc 30x area04

Project: SemÅa mz



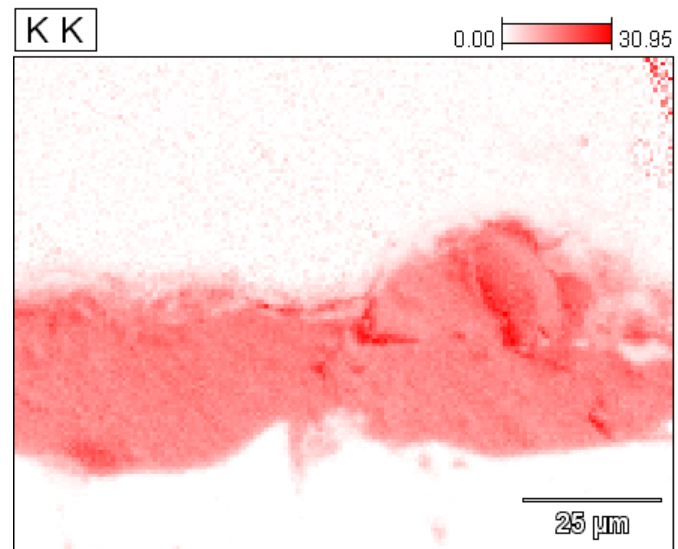
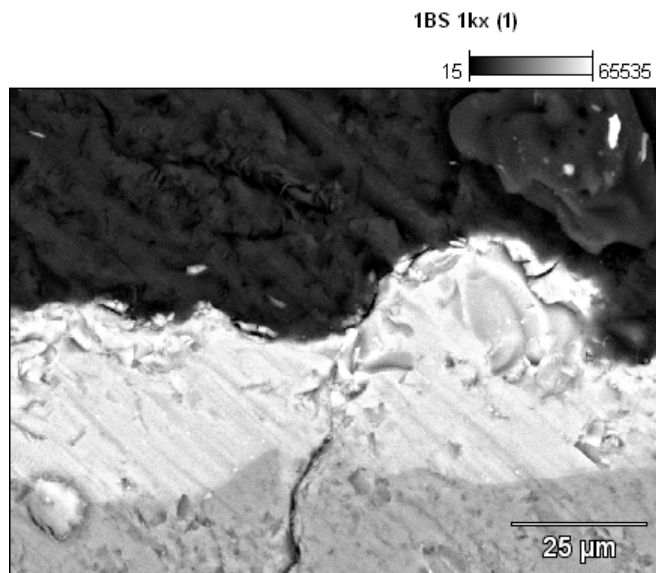
Data Type: Weight % Mag: 1000 Acc. Voltage: 20.0 kV

Project: SemÅa mz



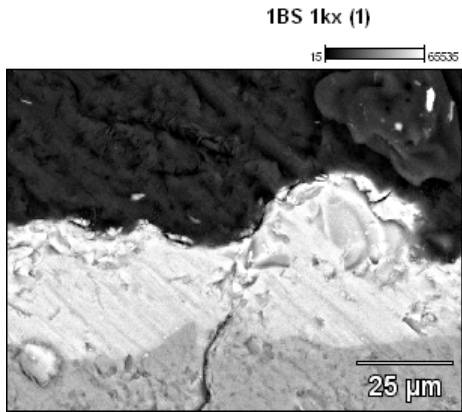
Data Type: Weight % Mag: 1000 Acc. Voltage: 20.0 kV

Project: SemÅa mz



Data Type: Weight % Mag: 1000 Acc. Voltage: 20.0 kV

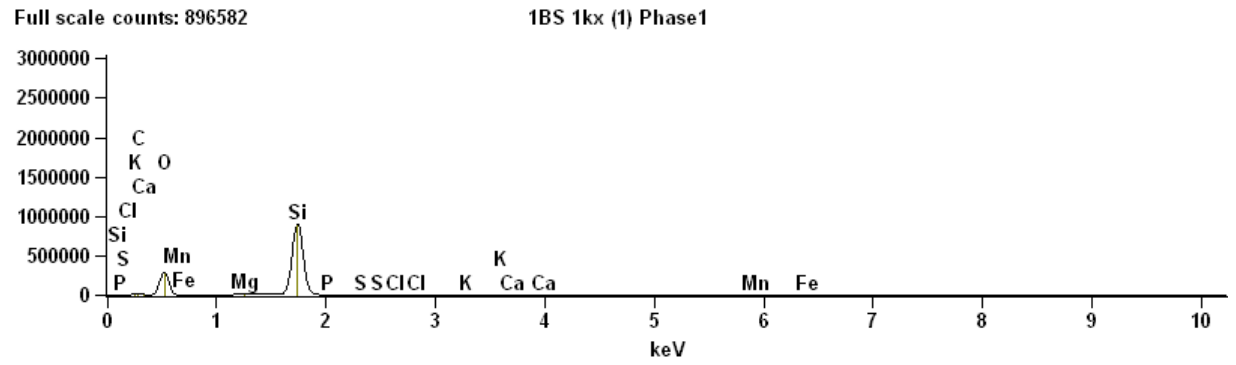
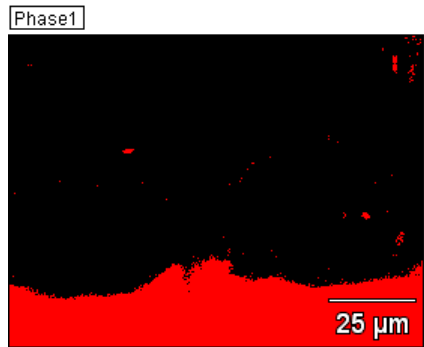
Project: SemÅa mz



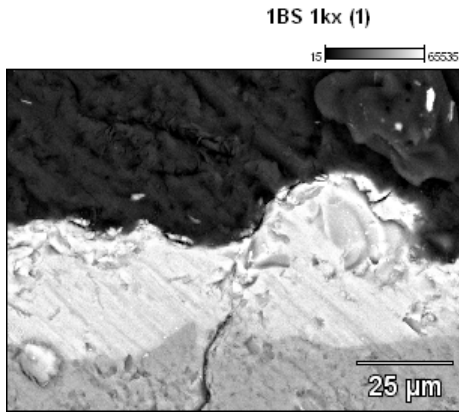
Accelerating Voltage: 20.0 kV

Magnification: 1000

Auto Phases From Counts



Project: SemÅa mz

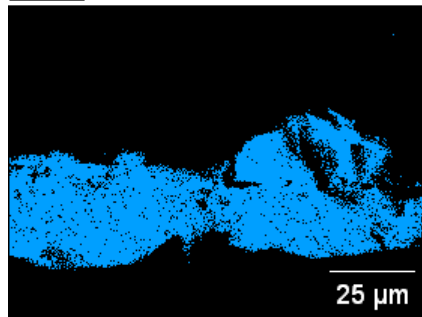


Accelerating Voltage: 20.0 kV

Magnification: 1000

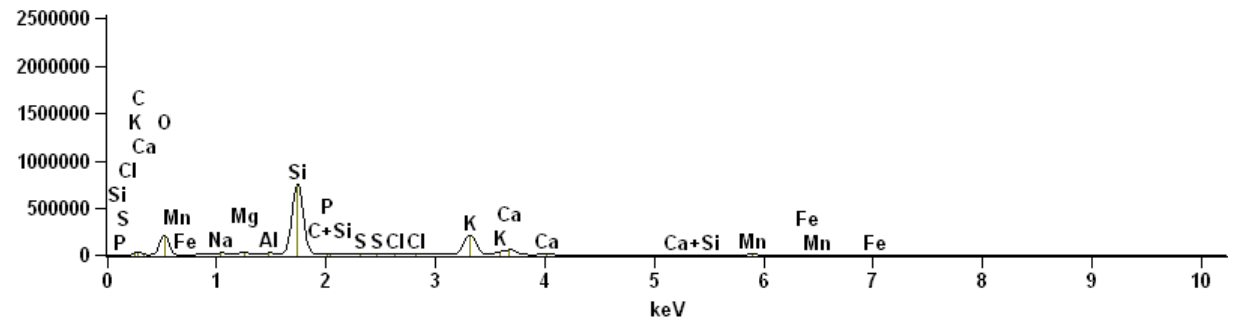
Auto Phases From Counts

Phase3

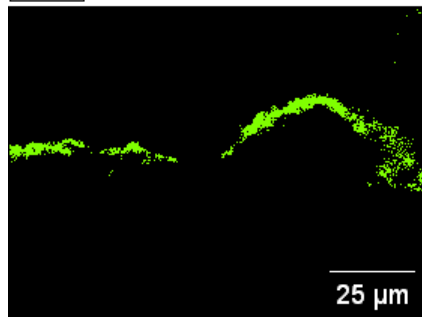


Full scale counts: 746058

1BS 1kx (1) Phase3

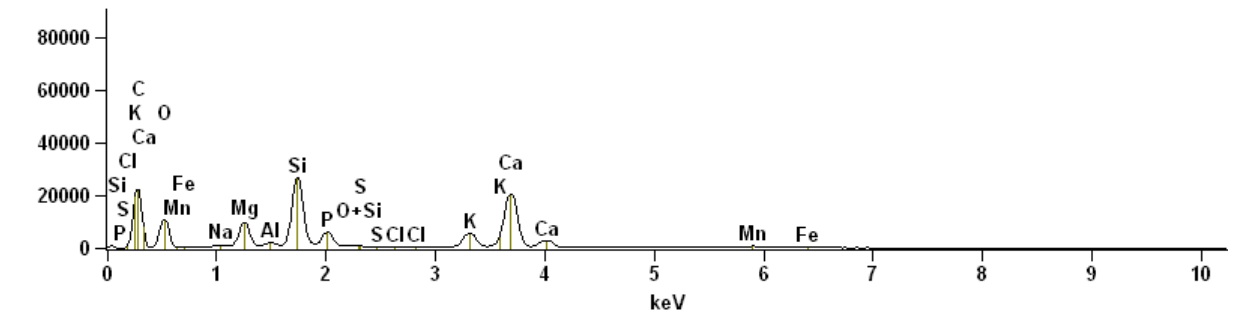


Phase4

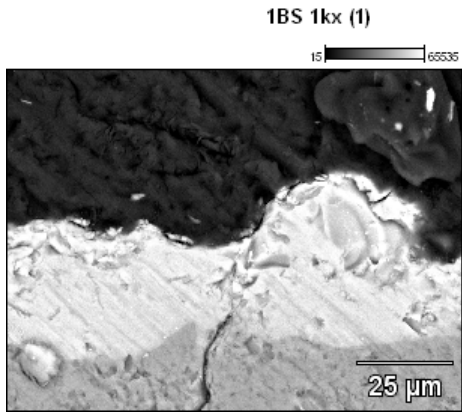


Full scale counts: 26782

1BS 1kx (1) Phase4



Project: SemÅa mz

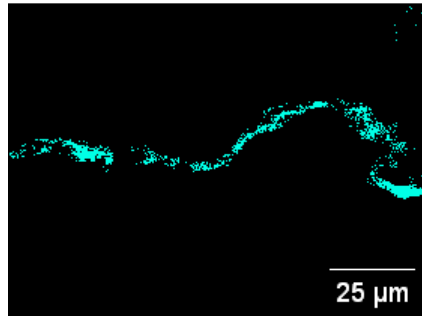


Accelerating Voltage: 20.0 kV

Magnification: 1000

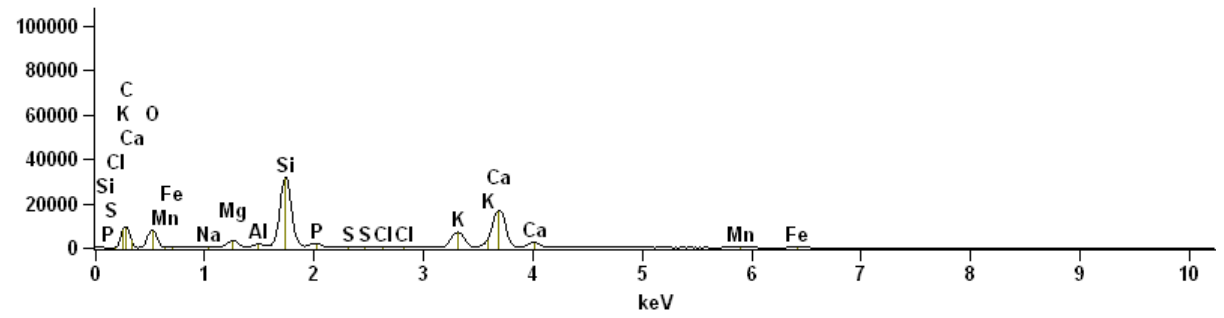
Auto Phases From Counts

Phase6



Full scale counts: 31848

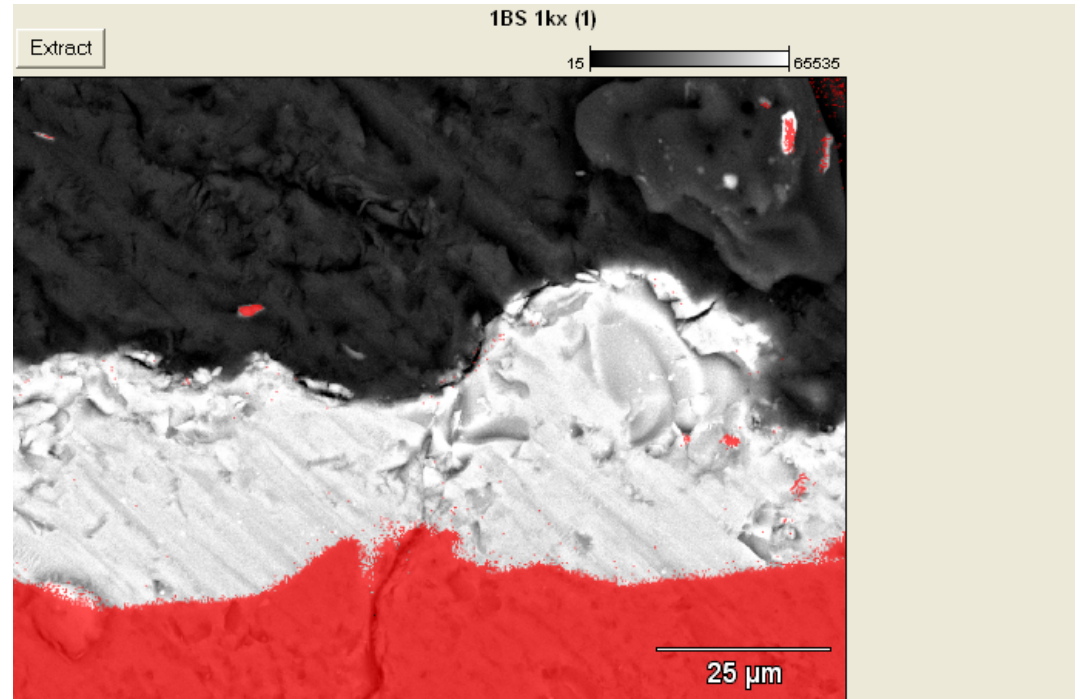
1BS 1kx (1) Phase6



Project: SemÅa mz

Quantitative Results for: 1BS 1kx (1) Phase1

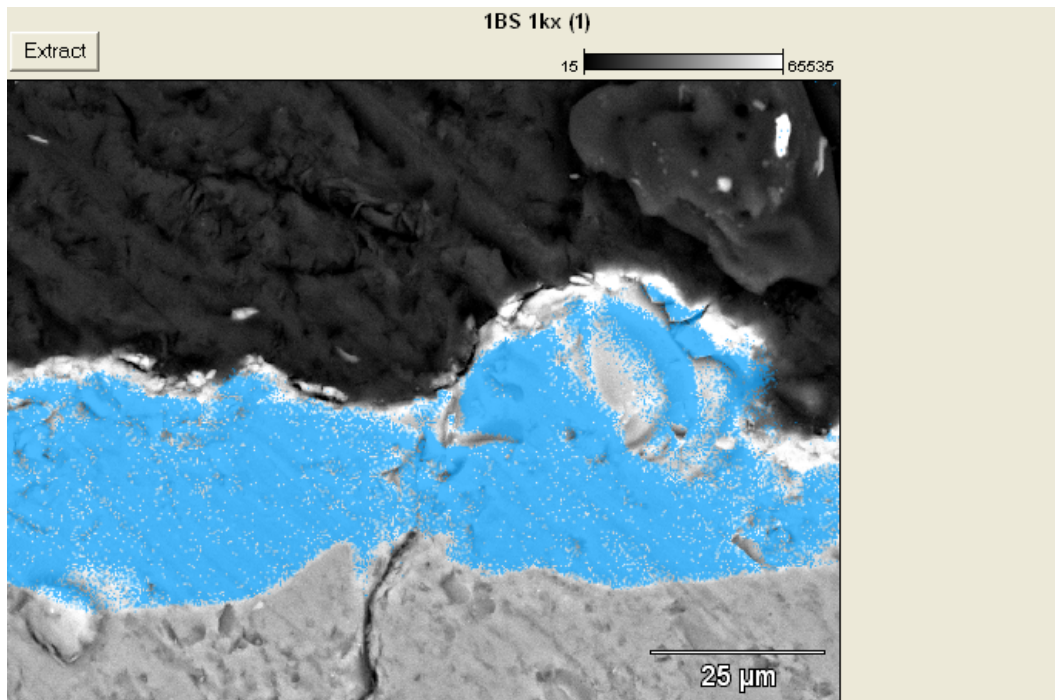
Element Line	Weight %	Weight % Error	Formul a	Compnd %
<i>O K</i>	53.02S	---		---
<i>Mg K</i>	0.05	+/- 0.00	MgO	0.08
<i>Si K</i>	46.14	+/- 0.09	SiO2	98.70
<i>P K</i>	0.21	+/- 0.01	P2O5	0.47
<i>S K</i>	0.00	---	SO3	0.00
<i>Cl K</i>	0.02	+/- 0.00	Cl	0.02
<i>K K</i>	0.32	+/- 0.01	K2O	0.39
<i>Ca K</i>	0.06	+/- 0.00	CaO	0.09
<i>Mn K</i>	0.04	+/- 0.01	MnO	0.05
<i>Fe K</i>	0.14	+/- 0.01	Fe2O3	0.20
Total	100.00			100.00



Project: SemÅa mz

Quantitative Results for: 1BS 1kx (1) Phase3

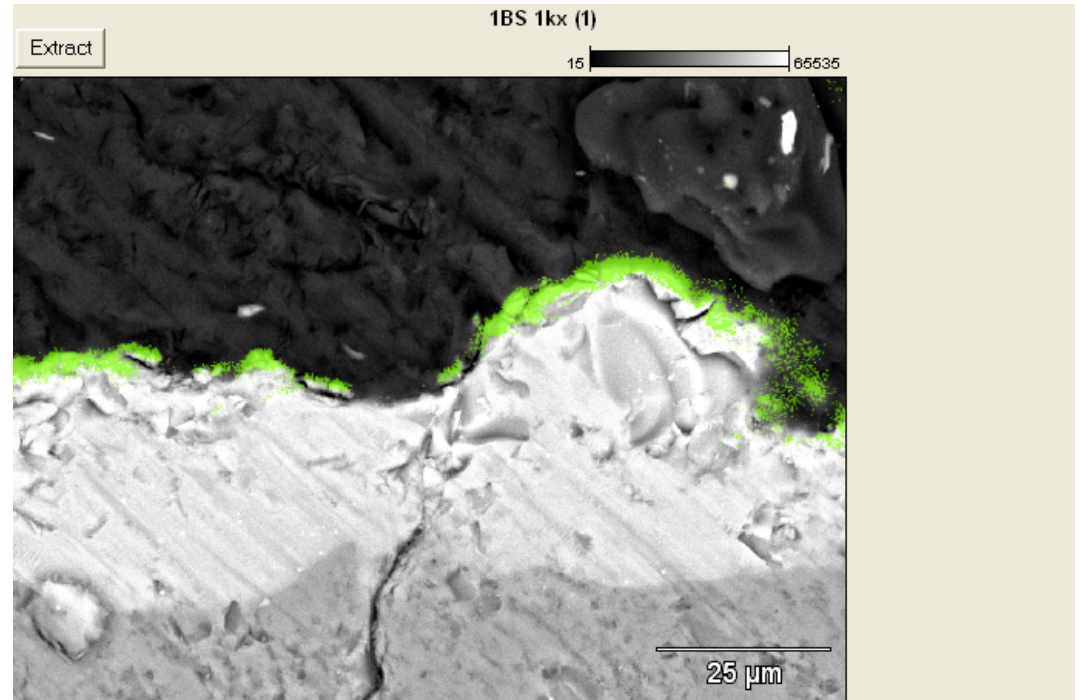
Element Line	Weight %	Weight % Error	Formul a	Compnd %
O K	43.90S	---		---
Na K	1.62	+/- 0.01	Na2O	2.18
Mg K	0.92	+/- 0.01	MgO	1.53
Al K	0.38	+/- 0.01	Al2O3	0.72
Si K	32.42	+/- 0.06	SiO2	69.36
P K	0.22	+/- 0.00	P2O5	0.50
S K	0.00	---	SO3	0.00
Cl K	0.00	+/- 0.00	Cl	0.00
K K	15.09	+/- 0.04	K2O	18.18
Ca K	3.99	+/- 0.02	CaO	5.58
Mn K	1.01	+/- 0.01	MnO	1.31
Fe K	0.44	+/- 0.01	Fe2O3	0.63
Total	100.00			100.00



Project: SemÅa mz

Quantitative Results for: 1BS 1kx (1) Phase4

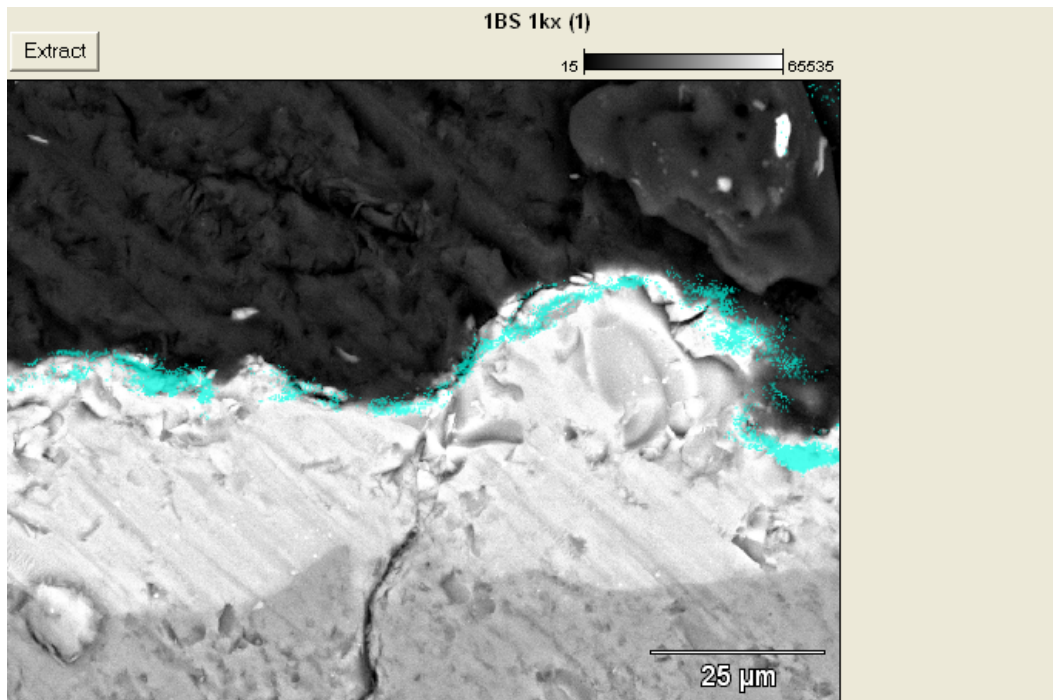
Element Line	Weight %	Weight % Error	Formul a	Compnd %
O K	40.83S	---		---
Na K	0.54	+/- 0.05	Na2O	0.73
Mg K	6.25	+/- 0.05	MgO	10.37
Al K	0.54	+/- 0.02	Al2O3	1.02
Si K	16.65	+/- 0.06	SiO2	35.63
P K	4.49	+/- 0.03	P2O5	10.29
S K	0.11	+/- 0.01	SO3	0.26
Cl K	0.01	+/- 0.01	Cl	0.01
K K	4.86	+/- 0.05	K2O	5.85
Ca K	22.94	+/- 0.09	CaO	32.10
Mn K	1.66	+/- 0.06	MnO	2.15
Fe K	1.11	+/- 0.06	Fe2O3	1.58
Total	100.00			100.00



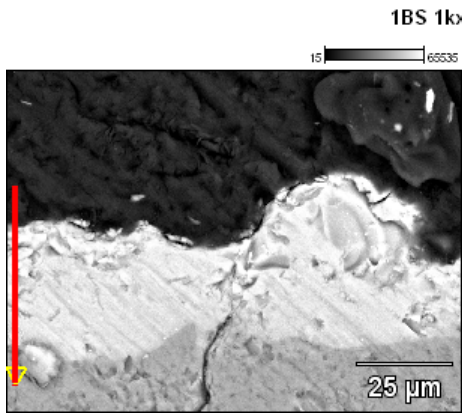
Project: SemÅa mz

Quantitative Results for: 1BS 1kx (1) Phase6

Element Line	Weight %	Weight % Error	Formul a	Compnd %
O K	40.83S	---		---
Na K	0.69	+/- 0.05	Na2O	0.92
Mg K	2.22	+/- 0.04	MgO	3.69
Al K	0.56	+/- 0.02	Al2O3	1.05
Si K	22.30	+/- 0.07	SiO2	47.71
P K	1.65	+/- 0.05	P2O5	3.78
S K	0.00	---	SO3	0.00
Cl K	0.01	+/- 0.01	Cl	0.01
K K	7.33	+/- 0.06	K2O	8.83
Ca K	22.10	+/- 0.10	CaO	30.92
Mn K	1.56	+/- 0.04	MnO	2.02
Fe K	0.75	+/- 0.07	Fe2O3	1.08
Total	100.00			100.00



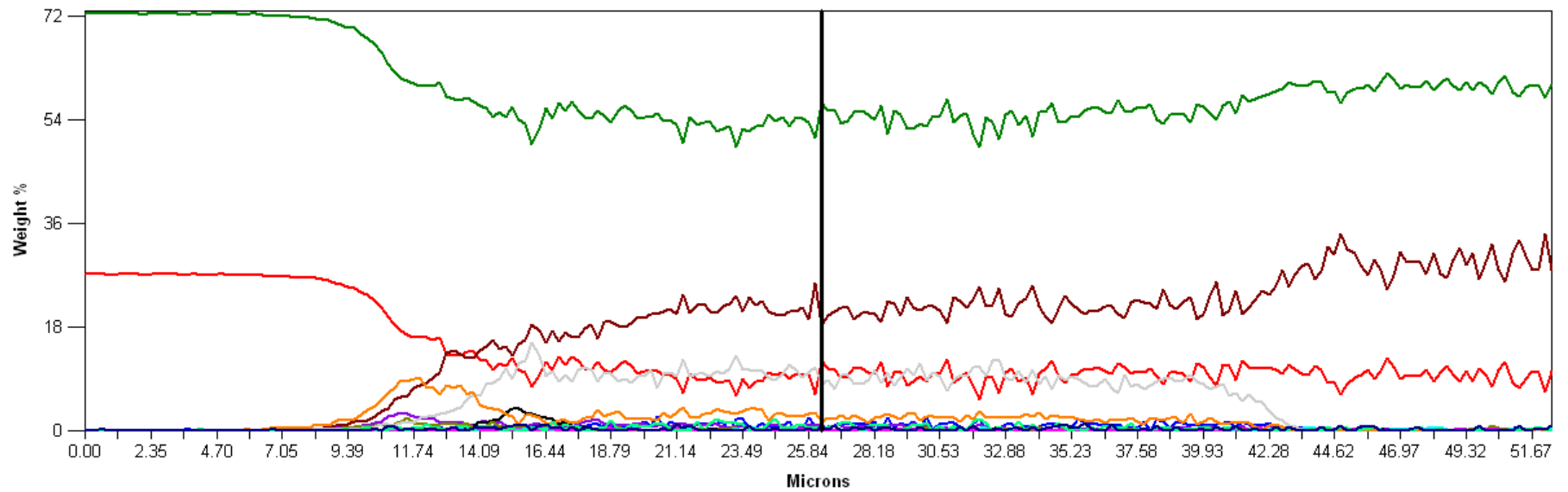
Project: SemÅa mz



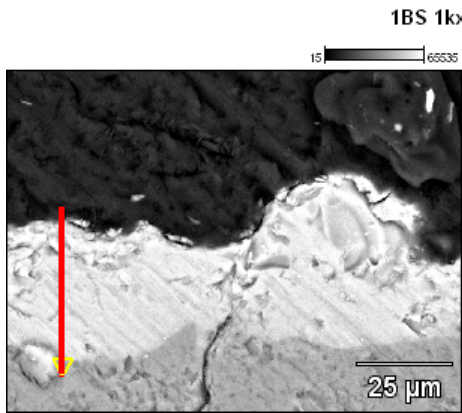
Accelerating Voltage: 20.0 kV

Magnification: 1000

1BS 1kx (1)Extract



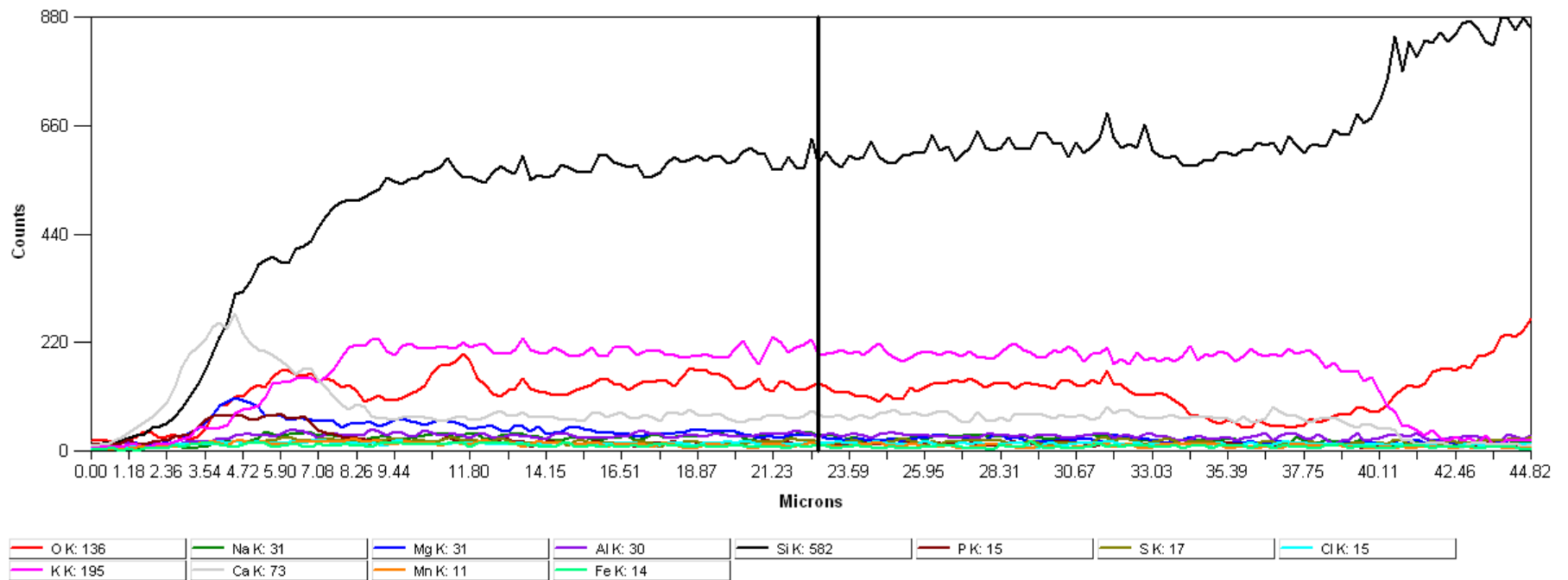
Project: SemÅa mz



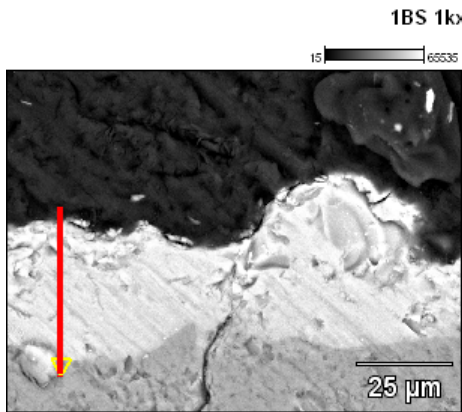
Accelerating Voltage: 20.0 kV

Magnification: 1000

1BS 1kx (1)Extract



Project: SemÅa mz

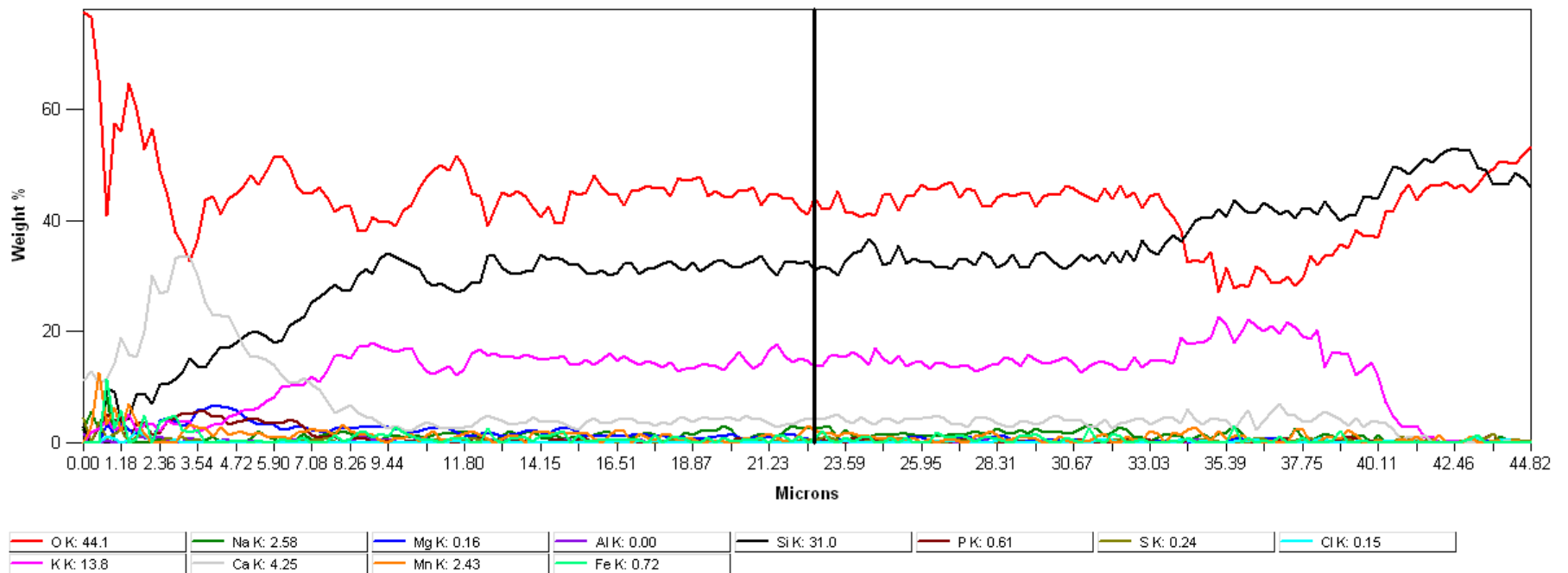


1BS 1kx (1)Extract

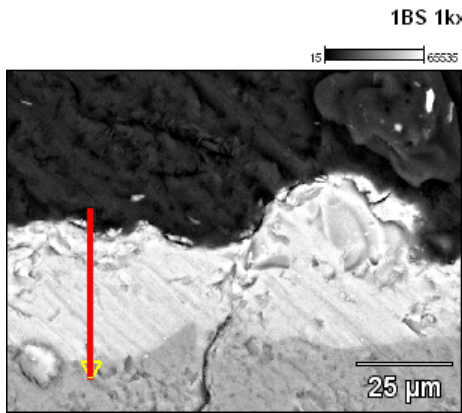
Accelerating Voltage: 20.0 kV

Magnification: 1000

1BS 1kx (1)Extract



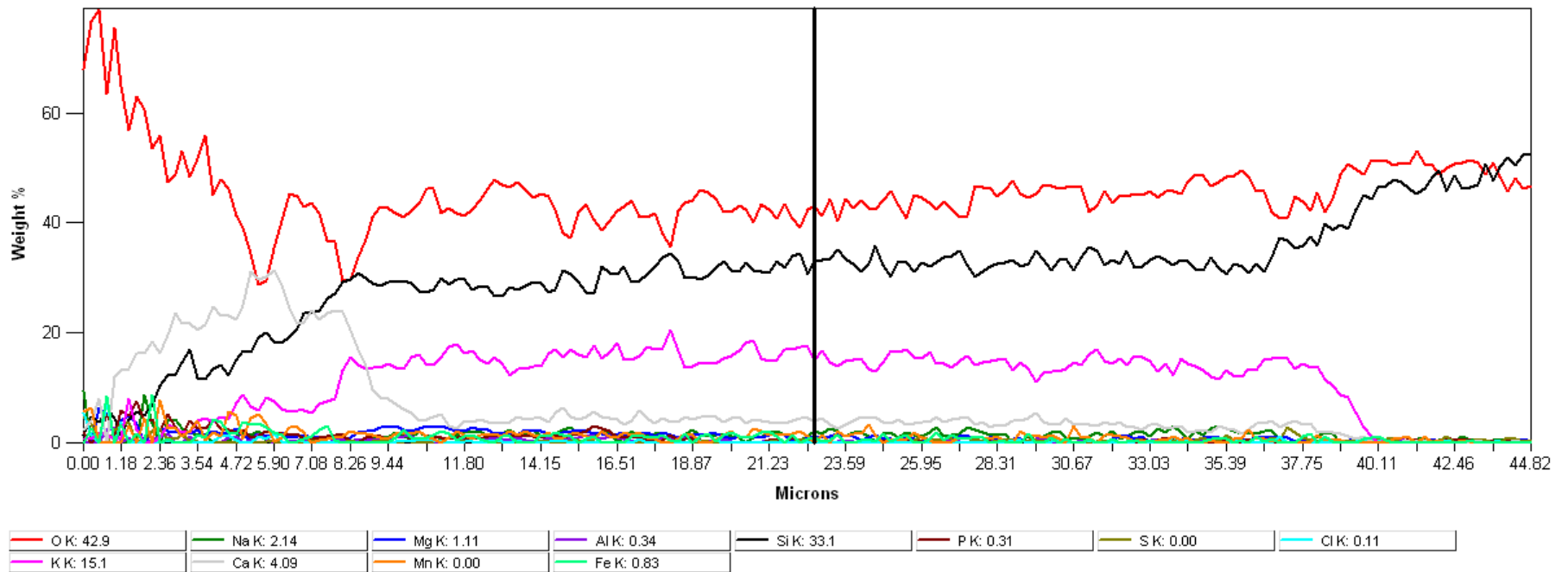
Project: SemÅa mz



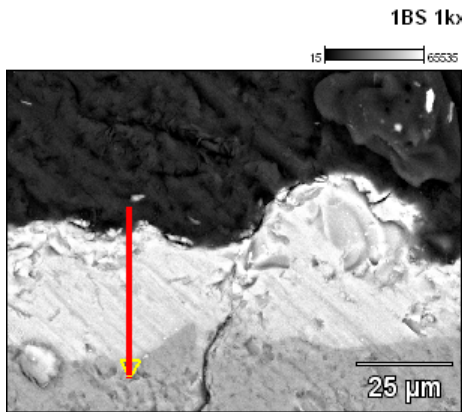
Accelerating Voltage: 20.0 kV

Magnification: 1000

1BS 1kx (1)Extract



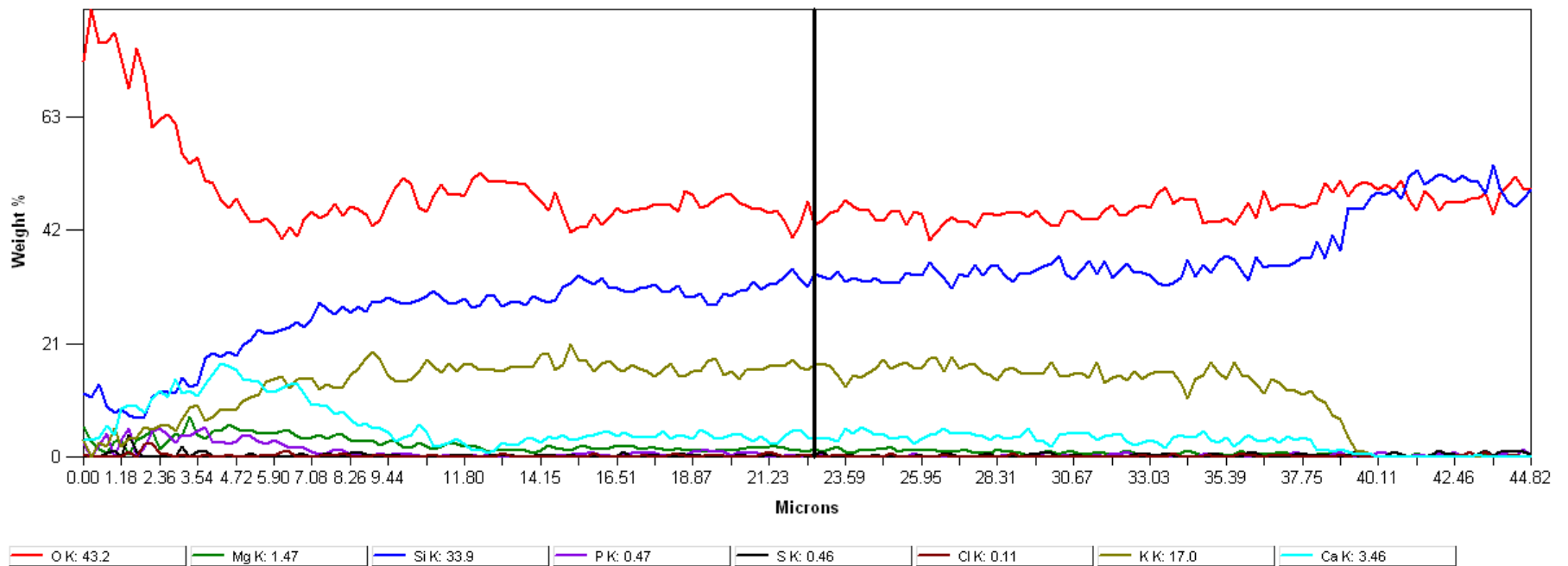
Project: SemÅa mz



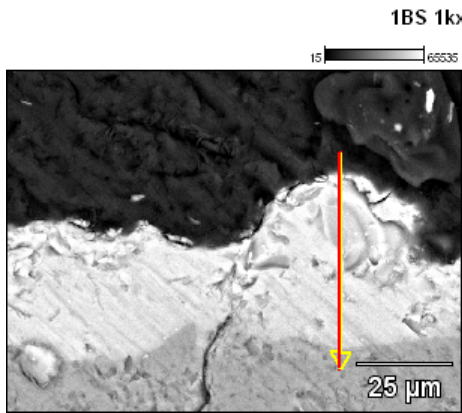
Accelerating Voltage: 20.0 kV

Magnification: 1000

1BS 1kx (1)Extract



Project: SemÅa mz



Accelerating Voltage: 20.0 kV

Magnification: 1000

1BS 1kx (1)Extract

