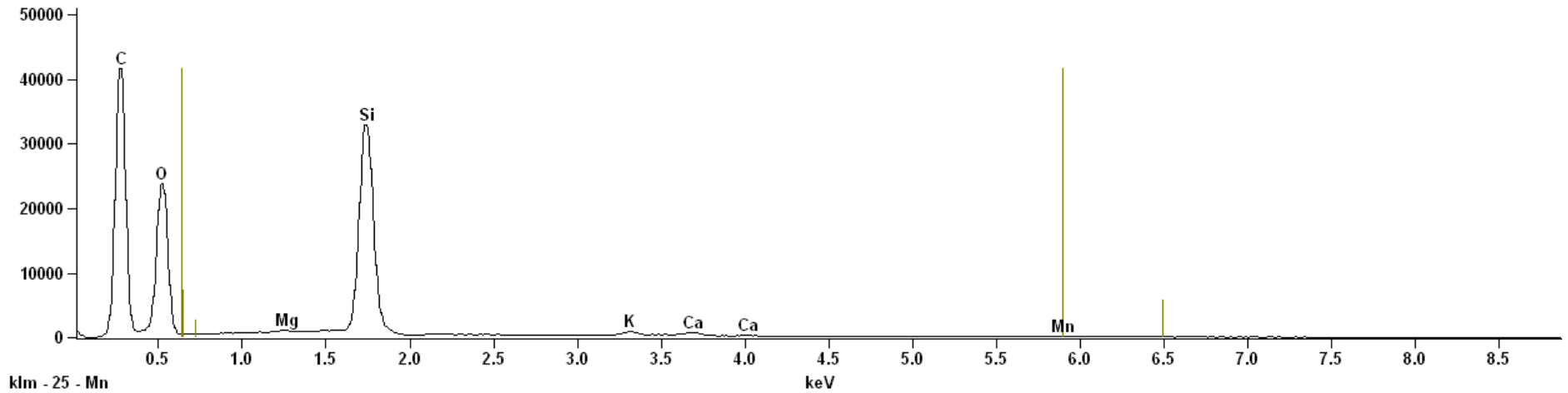


Project: SEMÅA-group 3

Full scale counts: 47786

1BS 30x area01



Live Time:30.0 sec.

Acc.Voltage: 15.0 kV Take Off Angle: 34.7 deg.

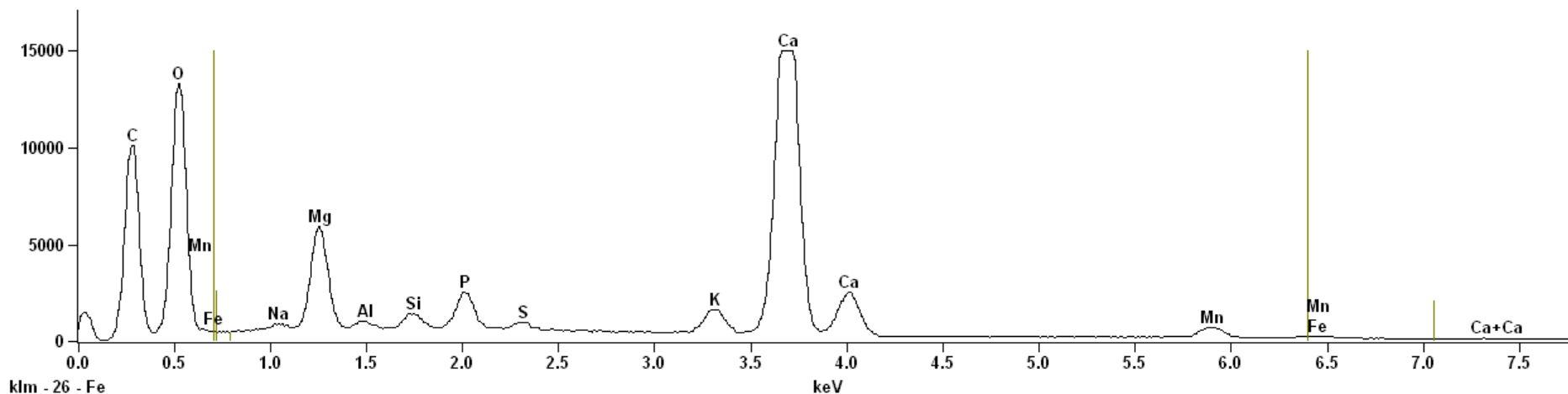
Quantitative Results for: 1BS 30x area01

| Element Line | Weight % | Weight % Error | Atom % | Formul a | Compnd % |
|---------------------|-----------------|-----------------------|---------------|-----------------|-----------------|
| O K | 52.03S | --- | 65.98 | | --- |
| Mg K | 0.26 | +/- 0.04 | 0.21 | MgO | 0.43 |
| Si K | 44.74 | +/- 0.13 | 32.32 | SiO2 | 95.70 |
| K K | 1.39 | +/- 0.08 | 0.72 | K2O | 1.67 |
| Ca K | 1.29 | +/- 0.09 | 0.65 | CaO | 1.80 |
| Mn K | 0.31 | +/- 0.07 | 0.11 | MnO | 0.40 |
| Total | 100.00 | | 100.00 | | 100.00 |

Project: SEMÅA-group 3

Full scale counts: 14967

W9 50x area08



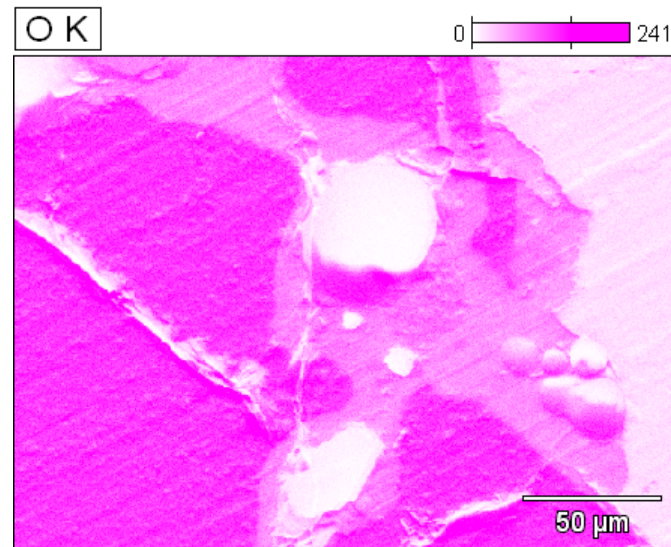
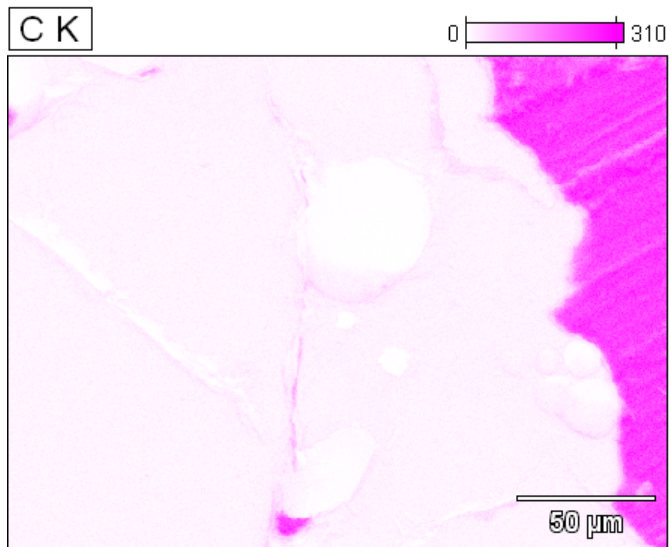
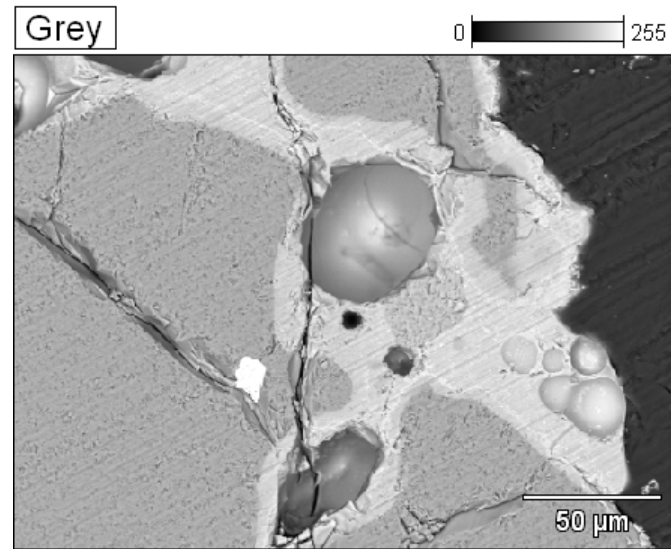
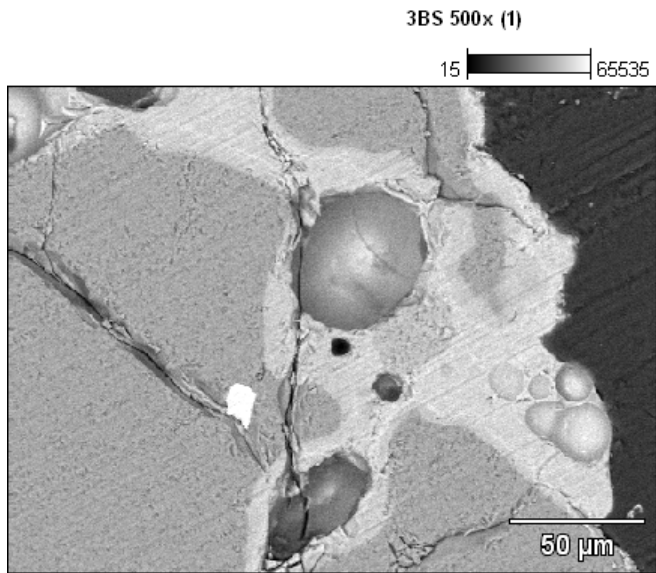
Live Time:30.0 sec.

Acc.Voltage: 15.0 kV Take Off Angle: 34.8 deg.

Quantitative Results for: W9 50x area08

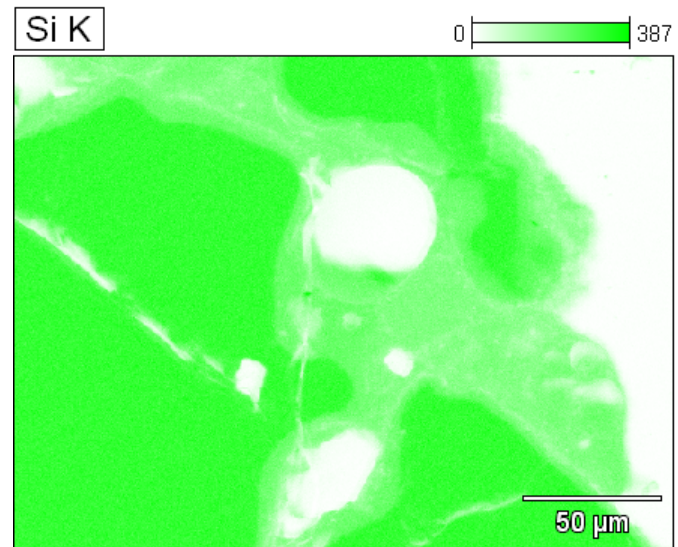
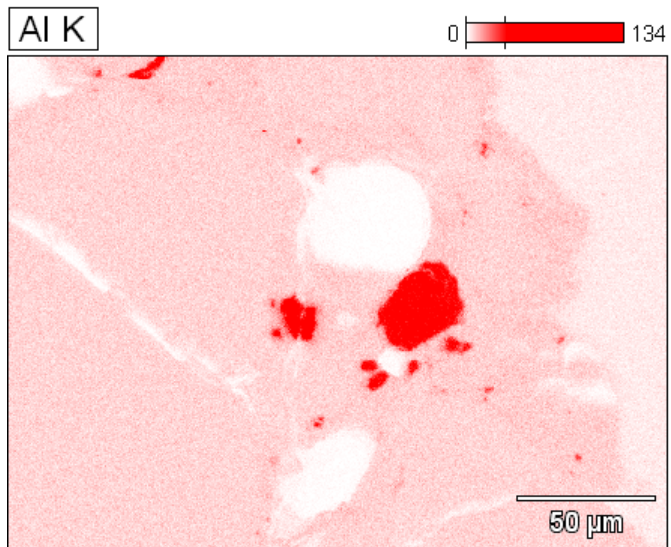
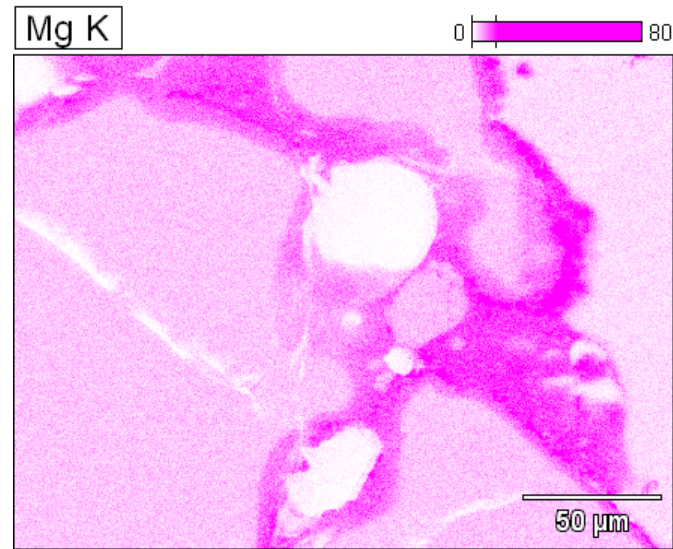
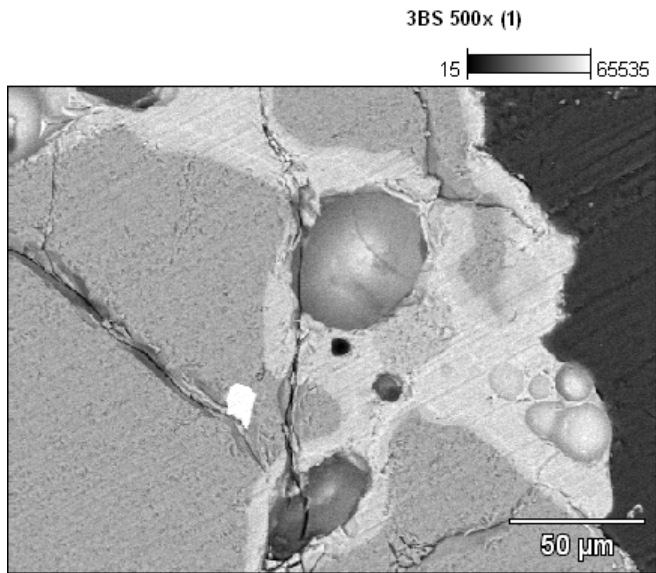
| Element Line | Weight % | Weight % Error | Atom % | Formul a | Compnd % |
|-----------------|----------|-------------------|--------|-------------|----------|
| O K | 31.83S | --- | 52.25 | | --- |
| Na K | 0.53 | +/- 0.04 | 0.61 | Na2O | 0.72 |
| Mg K | 6.33 | +/- 0.05 | 6.84 | MgO | 10.50 |
| Al K | 0.38 | +/- 0.02 | 0.37 | Al2O3 | 0.71 |
| Si K | 0.90 | +/- 0.02 | 0.85 | SiO2 | 1.93 |
| P K | 2.67 | +/- 0.03 | 2.26 | P2O5 | 6.12 |
| S K | 0.66 | +/- 0.02 | 0.54 | SO3 | 1.66 |
| K K | 2.60 | +/- 0.07 | 1.74 | K2O | 3.13 |
| Ca K | 48.97 | +/- 0.19 | 32.09 | CaO | 68.52 |
| Mn K | 4.46 | +/- 0.16 | 2.13 | MnO | 5.76 |
| Fe K | 0.67 | +/- 0.08 | 0.32 | Fe2O3 | 0.96 |
| Total | 100.00 | | 100.00 | | 100.00 |

Project: SEMÅA-group 3



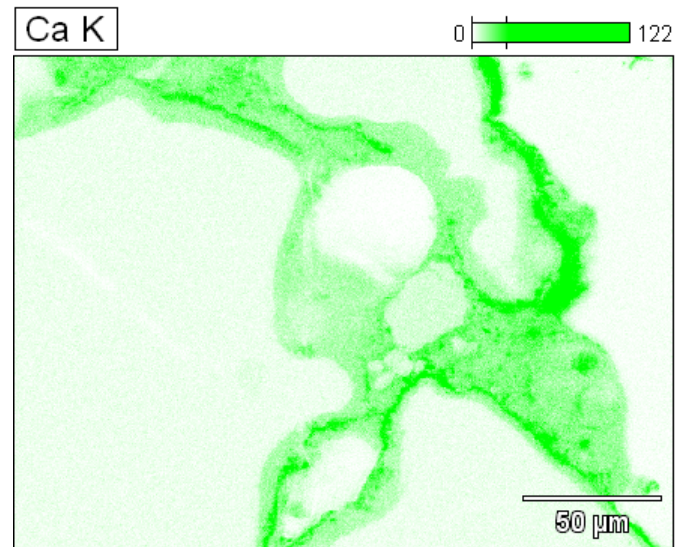
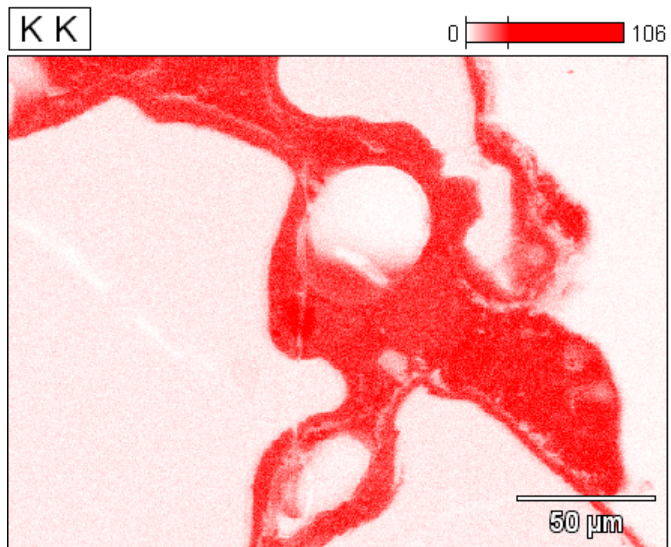
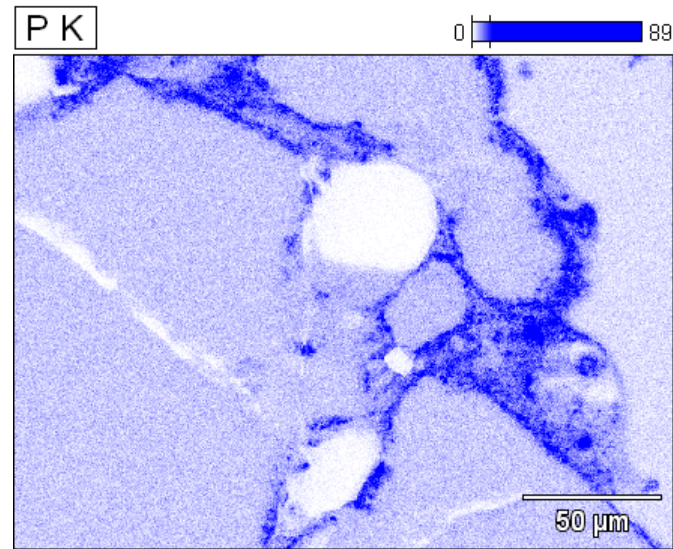
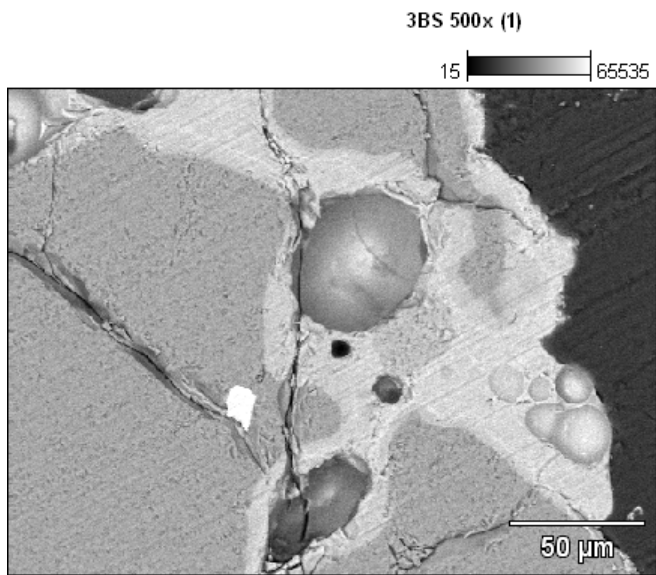
Data Type: Counts Mag: 500 Acc. Voltage: 15.0 kV

Project: SEMÅA-group 3



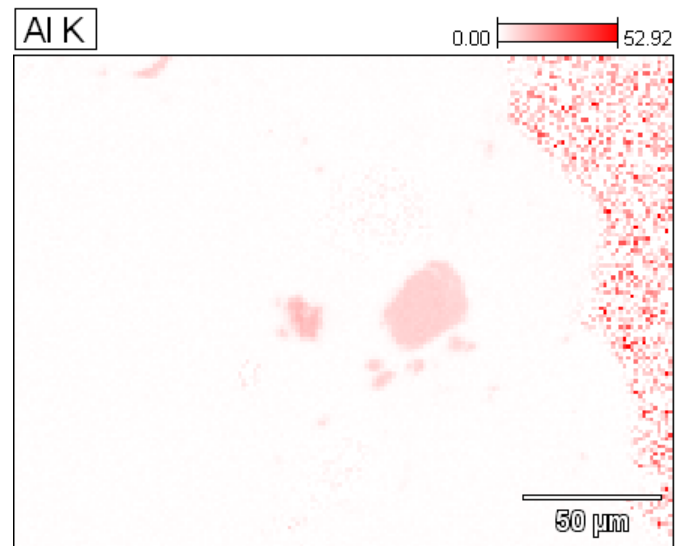
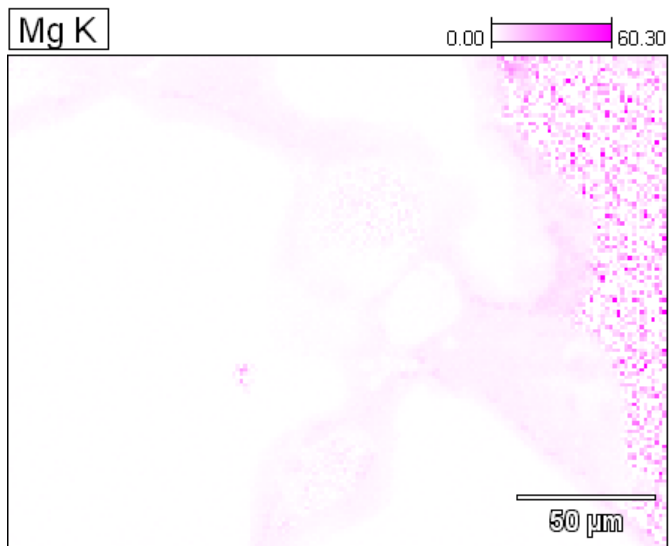
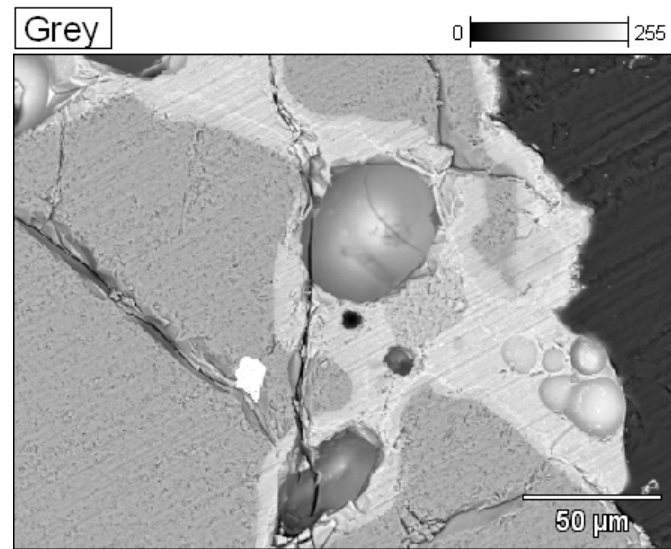
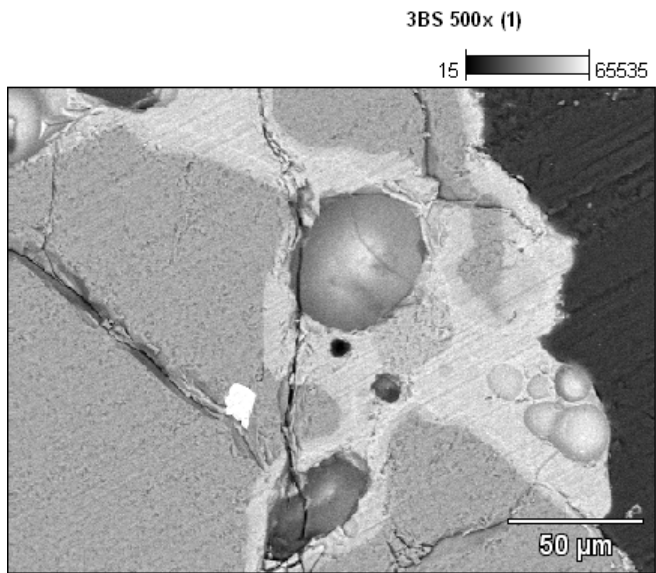
Data Type: Counts Mag: 500 Acc. Voltage: 15.0 kV

Project: SEMÅA-group 3

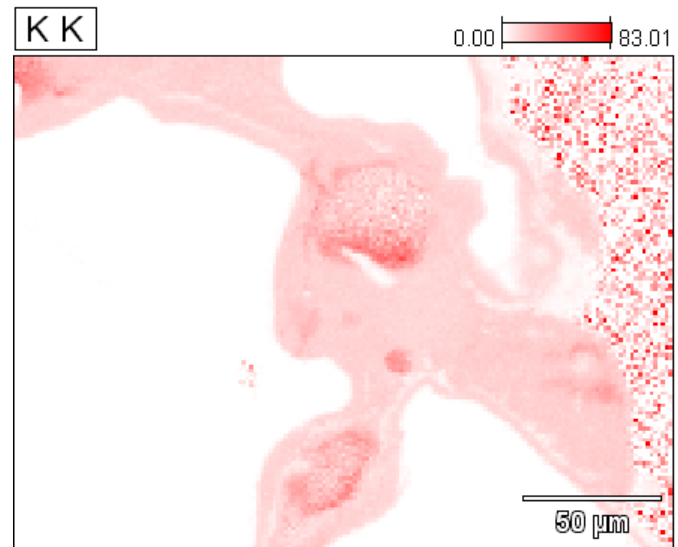
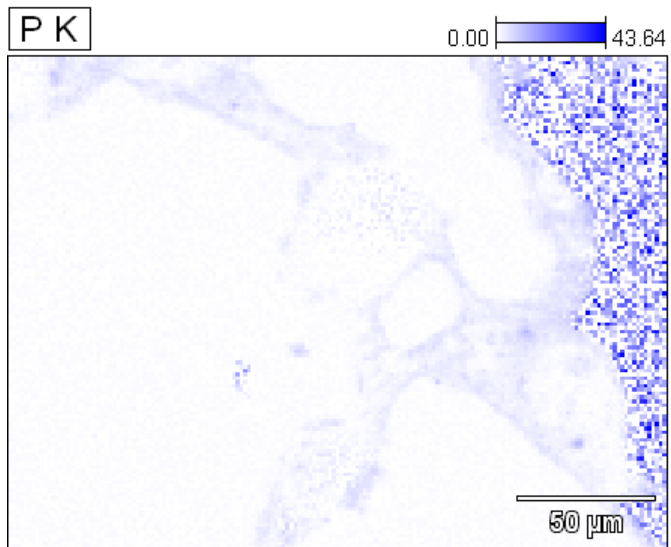
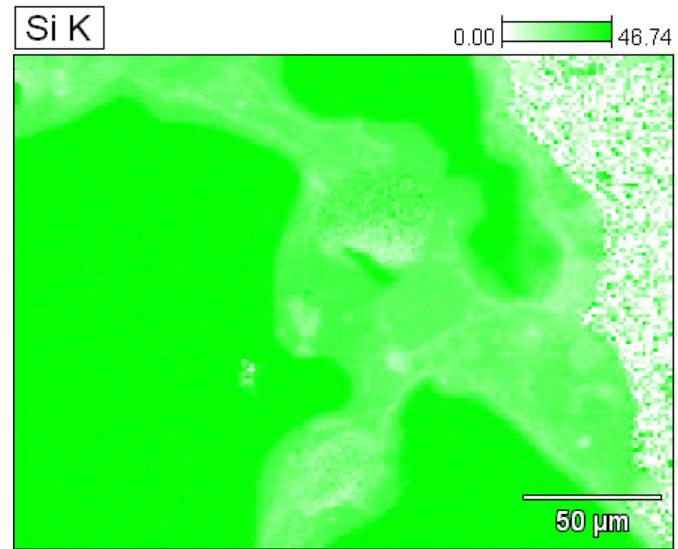
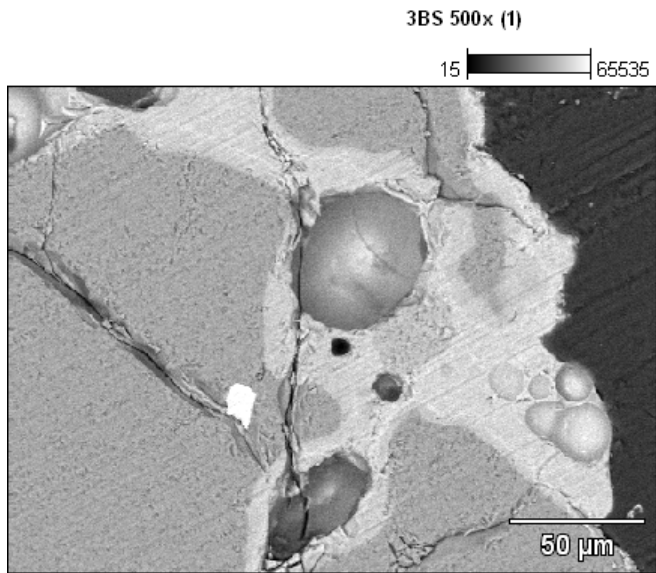


Data Type: Counts Mag: 500 Acc. Voltage: 15.0 kV

Project: SEMÅA-group 3

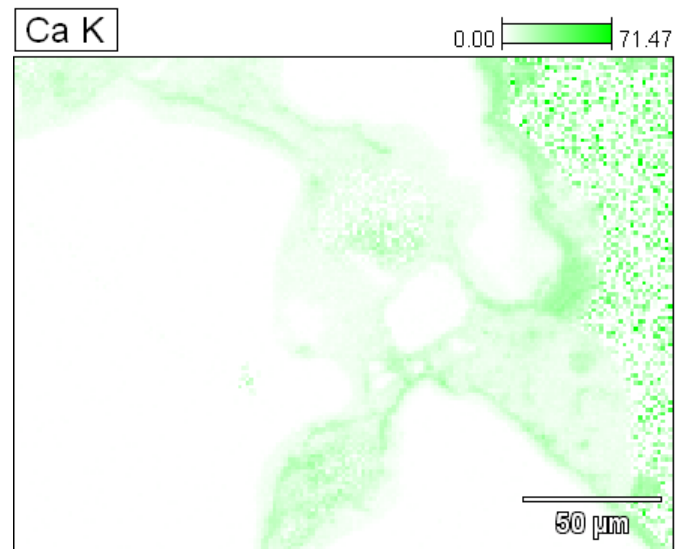
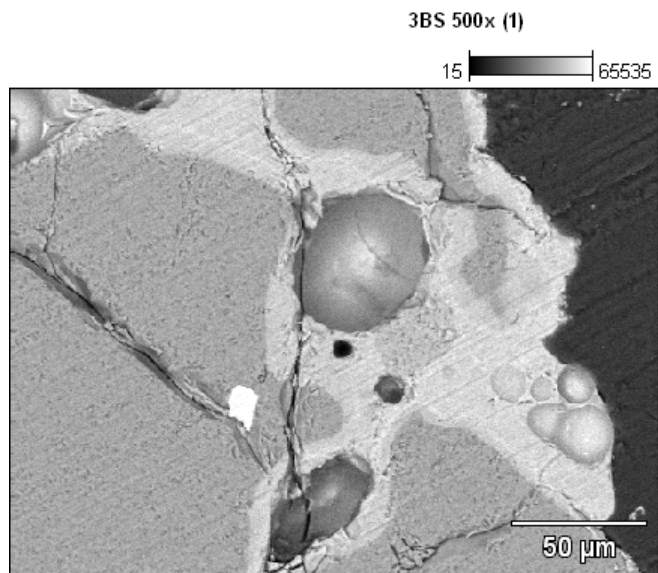


Data Type: Weight % Mag: 500 Acc. Voltage: 15.0 kV



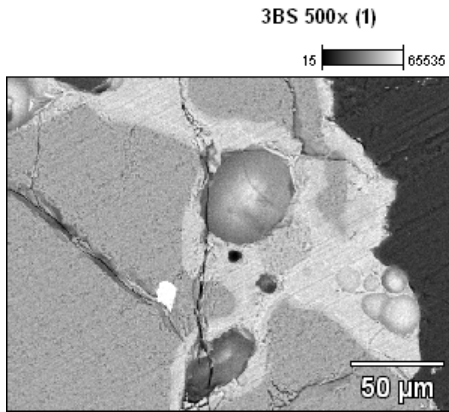
Data Type: Weight % Mag: 500 Acc. Voltage: 15.0 kV

Project: SEMÅA-group 3

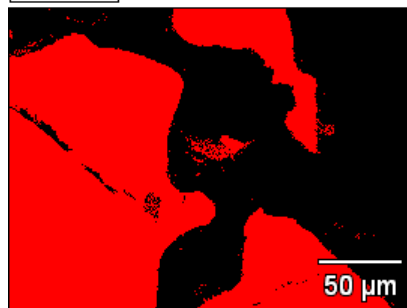


Data Type: Weight % Mag: 500 Acc. Voltage: 15.0 kV

Project: SEMÅA-group 3



Phase1



Phase2



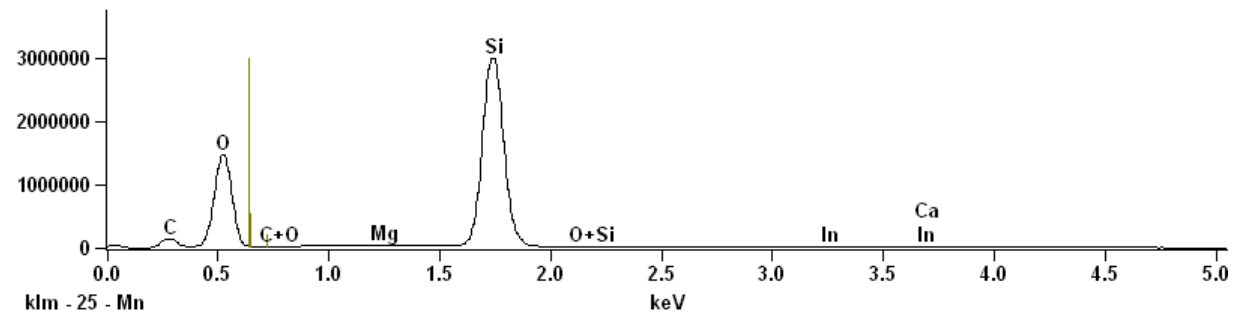
Accelerating Voltage: 15.0 kV

Magnification: 500

Auto Phases From Counts

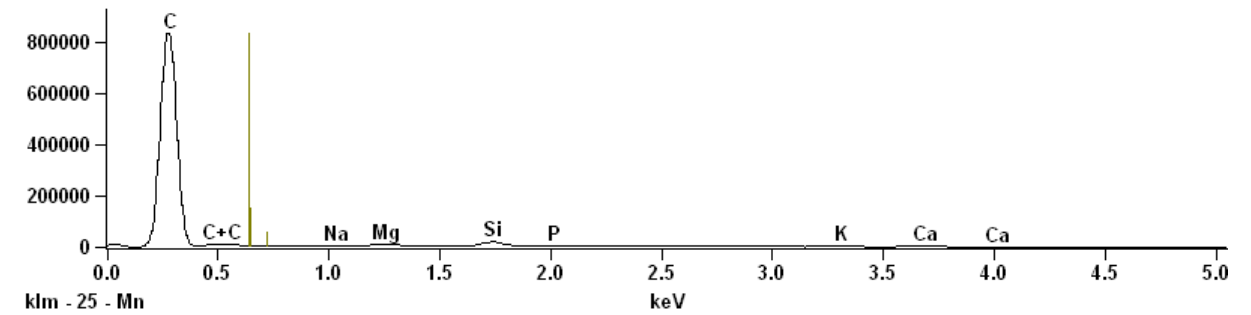
Full scale counts: 2984887

3BS 500x (1) Phase1

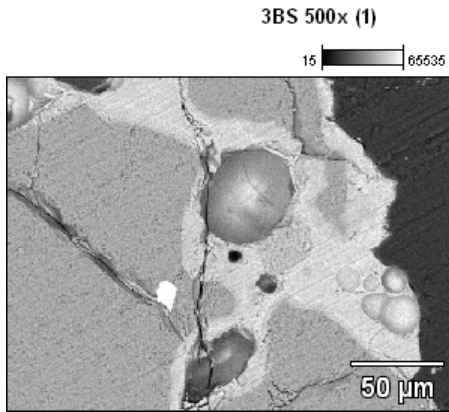


Full scale counts: 832541

3BS 500x (1) Phase2



Project: SEMÅA-group 3

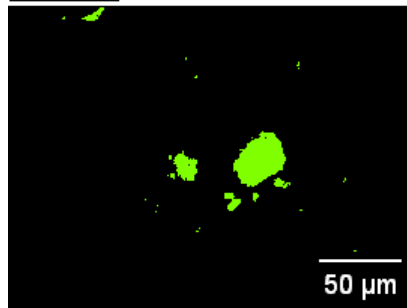


Accelerating Voltage: 15.0 kV

Magnification: 500

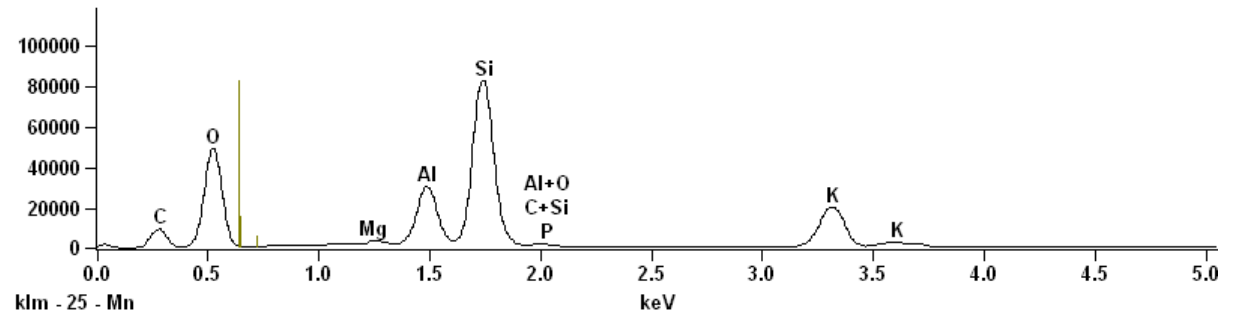
Auto Phases From Counts

Phase4

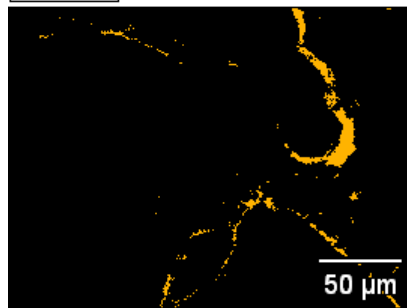


Full scale counts: 82340

3BS 500x (1) Phase4

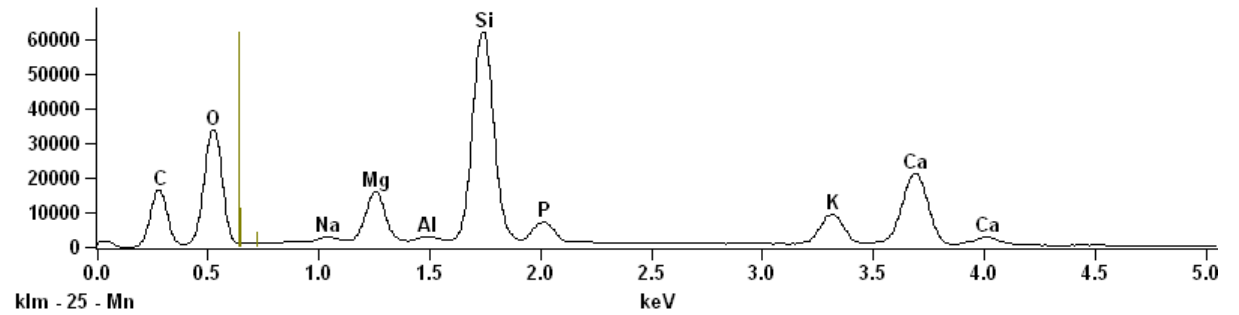


Phase5

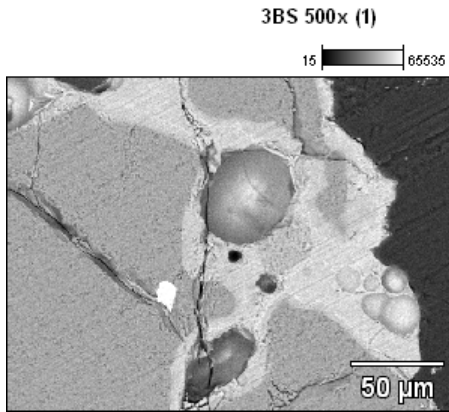


Full scale counts: 61774

3BS 500x (1) Phase5



Project: SEMÅA-group 3

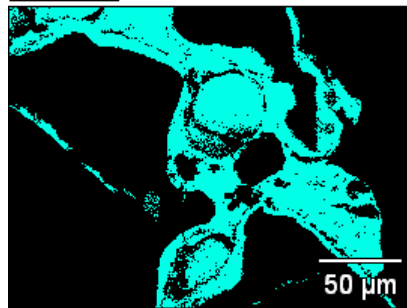


Accelerating Voltage: 15.0 kV

Magnification: 500

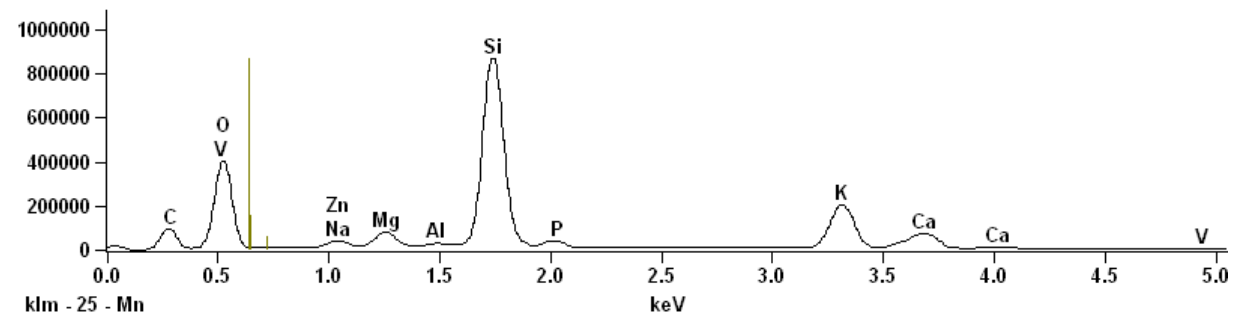
Auto Phases From Counts

Phase6

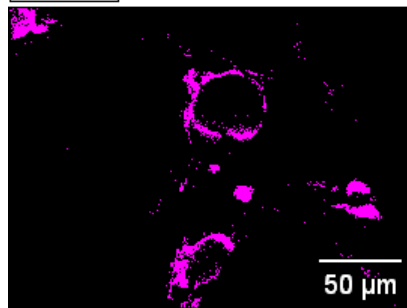


Full scale counts: 865112

3BS 500x (1) Phase6

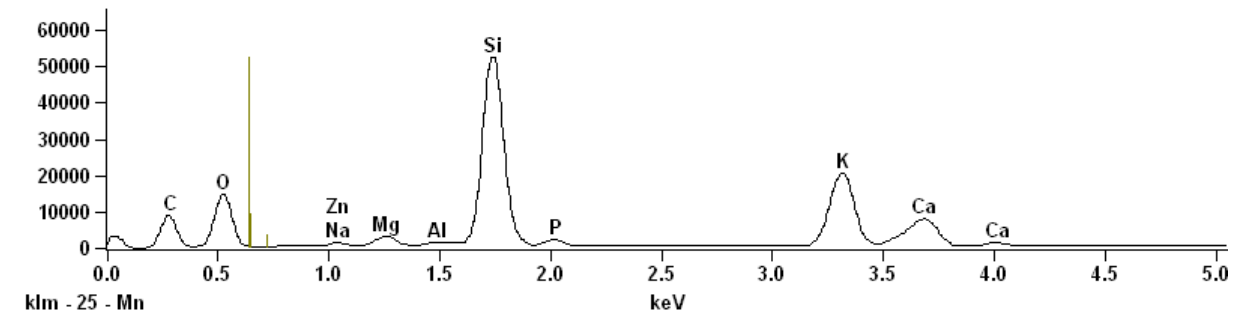


Phase8



Full scale counts: 52203

3BS 500x (1) Phase8



Project: SEMÅA-group 3

Quantitative Results for: 3BS 500x (1) Phase1

| <i>Element Line</i> | <i>Weight %</i> | <i>Weight % Error</i> | <i>Atom %</i> | <i>Formul a</i> | <i>Compnd %</i> |
|-------------------------|-----------------|---------------------------|---------------|---------------------|-----------------|
| <i>O K</i> | 53.00S | --- | 66.59 | | --- |
| <i>Mg K</i> | 0.06 | +/- 0.00 | 0.05 | MgO | 0.10 |
| <i>Si K</i> | 46.46 | +/- 0.09 | 33.25 | SiO2 | 99.39 |
| <i>Ca K</i> | 0.07 | +/- 0.01 | 0.03 | CaO | 0.09 |
| <i>In L</i> | 0.42 | +/- 0.02 | 0.07 | In | 0.42 |
| <i>Total</i> | 100.00 | | 100.00 | | 100.00 |

Project: SEMÅA-group 3

Quantitative results are unavailable for 3BS 500x (1) Phase2.

Quantitative results are unavailable for 3BS 500x (1) Phase2.

Project: SEMÅA-group 3

Quantitative Results for: 3BS 500x (1) Phase4

| <i>Element Line</i> | <i>Weight %</i> | <i>Weight % Error</i> | <i>Atom %</i> | <i>Formul a</i> | <i>Compnd %</i> |
|-------------------------|-----------------|---------------------------|---------------|--------------------------------|-----------------|
| <i>O K</i> | 45.65S | --- | 61.31 | | --- |
| <i>Mg K</i> | 0.41 | +/- 0.02 | 0.37 | MgO | 0.68 |
| <i>Al K</i> | 8.98 | +/- 0.04 | 7.15 | Al ₂ O ₃ | 16.97 |
| <i>Si K</i> | 29.68 | +/- 0.08 | 22.71 | SiO ₂ | 63.49 |
| <i>P K</i> | 0.41 | +/- 0.03 | 0.29 | P ₂ O ₅ | 0.95 |
| <i>K K</i> | 14.87 | +/- 0.06 | 8.17 | K ₂ O | 17.92 |
| <i>Total</i> | 100.00 | | 100.00 | | 100.00 |

Quantitative Results for: 3BS 500x (1) Phase5

| <i>Element Line</i> | <i>Weight %</i> | <i>Weight % Error</i> | <i>Atom %</i> | <i>Formul a</i> | <i>Compnd %</i> |
|-------------------------|-----------------|---------------------------|---------------|--------------------------------|-----------------|
| <i>O K</i> | 42.79S | --- | 59.80 | | --- |
| <i>Na K</i> | 0.80 | +/- 0.03 | 0.77 | Na ₂ O | 1.07 |
| <i>Mg K</i> | 4.94 | +/- 0.04 | 4.54 | MgO | 8.19 |
| <i>Al K</i> | 0.37 | +/- 0.03 | 0.30 | Al ₂ O ₃ | 0.69 |
| <i>Si K</i> | 22.88 | +/- 0.07 | 18.22 | SiO ₂ | 48.95 |
| <i>P K</i> | 3.16 | +/- 0.04 | 2.28 | P ₂ O ₅ | 7.24 |
| <i>K K</i> | 6.28 | +/- 0.05 | 3.59 | K ₂ O | 7.57 |
| <i>Ca K</i> | 18.79 | +/- 0.08 | 10.48 | CaO | 26.29 |
| <i>Total</i> | 100.00 | | 100.00 | | 100.00 |

Quantitative Results for: 3BS 500x (1) Phase6

| <i>Element Line</i> | <i>Weight %</i> | <i>Weight % Error</i> | <i>Atom %</i> | <i>Formul a</i> | <i>Compnd %</i> |
|-------------------------|-----------------|---------------------------|---------------|---------------------|-----------------|
| <i>O K</i> | 43.92S | --- | 60.41 | | --- |
| <i>Na K</i> | 1.22 | +/- 0.02 | 1.17 | Na2O | 1.64 |
| <i>Mg K</i> | 2.13 | +/- 0.01 | 1.92 | MgO | 3.53 |
| <i>Al K</i> | 0.25 | +/- 0.01 | 0.20 | Al2O3 | 0.47 |
| <i>Si K</i> | 30.32 | +/- 0.06 | 23.75 | SiO2 | 64.86 |
| <i>P K</i> | 1.55 | +/- 0.01 | 1.10 | P2O5 | 3.56 |
| <i>K K</i> | 14.23 | +/- 0.04 | 8.01 | K2O | 17.14 |
| <i>Ca K</i> | 6.07 | +/- 0.02 | 3.33 | CaO | 8.49 |
| <i>V K</i> | 0.00 | +/- 0.01 | 0.00 | V | 0.00 |
| <i>Zn K</i> | 0.31 | +/- 0.03 | 0.10 | Zn | 0.31 |
| <i>Total</i> | 100.00 | | 100.00 | | 100.00 |

Project: SEMÅA-group 3

Quantitative Results for: 3BS 500x (1) Phase8

| <i>Element Line</i> | <i>Weight %</i> | <i>Weight % Error</i> | <i>Atom %</i> | <i>Formul a</i> | <i>Compnd %</i> |
|-------------------------|-----------------|---------------------------|---------------|--------------------------------|-----------------|
| <i>O K</i> | 40.48S | --- | 58.25 | | --- |
| <i>Na K</i> | 0.57 | +/- 0.03 | 0.57 | Na ₂ O | 0.77 |
| <i>Mg K</i> | 1.20 | +/- 0.01 | 1.13 | MgO | 1.99 |
| <i>Al K</i> | 0.24 | +/- 0.01 | 0.21 | Al ₂ O ₃ | 0.46 |
| <i>Si K</i> | 26.31 | +/- 0.07 | 21.57 | SiO ₂ | 56.29 |
| <i>P K</i> | 1.13 | +/- 0.04 | 0.84 | P ₂ O ₅ | 2.58 |
| <i>K K</i> | 20.11 | +/- 0.09 | 11.84 | K ₂ O | 24.23 |
| <i>Ca K</i> | 9.33 | +/- 0.04 | 5.36 | CaO | 13.05 |
| <i>Zn K</i> | 0.63 | +/- 0.14 | 0.22 | Zn | 0.63 |
| <i>Total</i> | 100.00 | | 100.00 | | 100.00 |

Project: SEMÅA-group 3

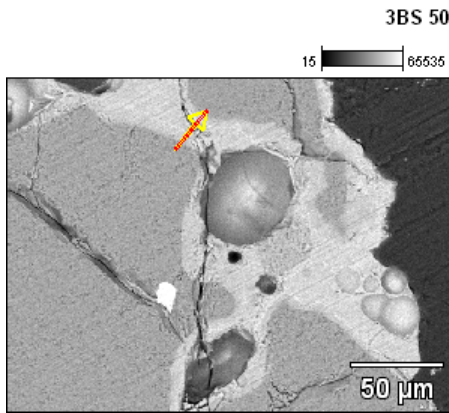
Segments

No segmentation data is available.

Combinations

| <i>Combinations</i> | <i>Color</i> | <i>Area %</i> | <i>Combinations</i> |
|---------------------|--------------|---------------|---------------------|
| <i>Phase1</i> | Custom | 50.42 | C 1 |
| <i>Phase2</i> | Custom | 13.91 | C 2 |
| <i>Phase4</i> | Custom | 2.37 | C 4 |
| <i>Phase5</i> | Custom | 2.31 | C 6 |
| <i>Phase6</i> | Custom | 27.38 | C 7, C 10, C 3 |
| <i>Phase8</i> | Custom | 3.61 | C 11 |

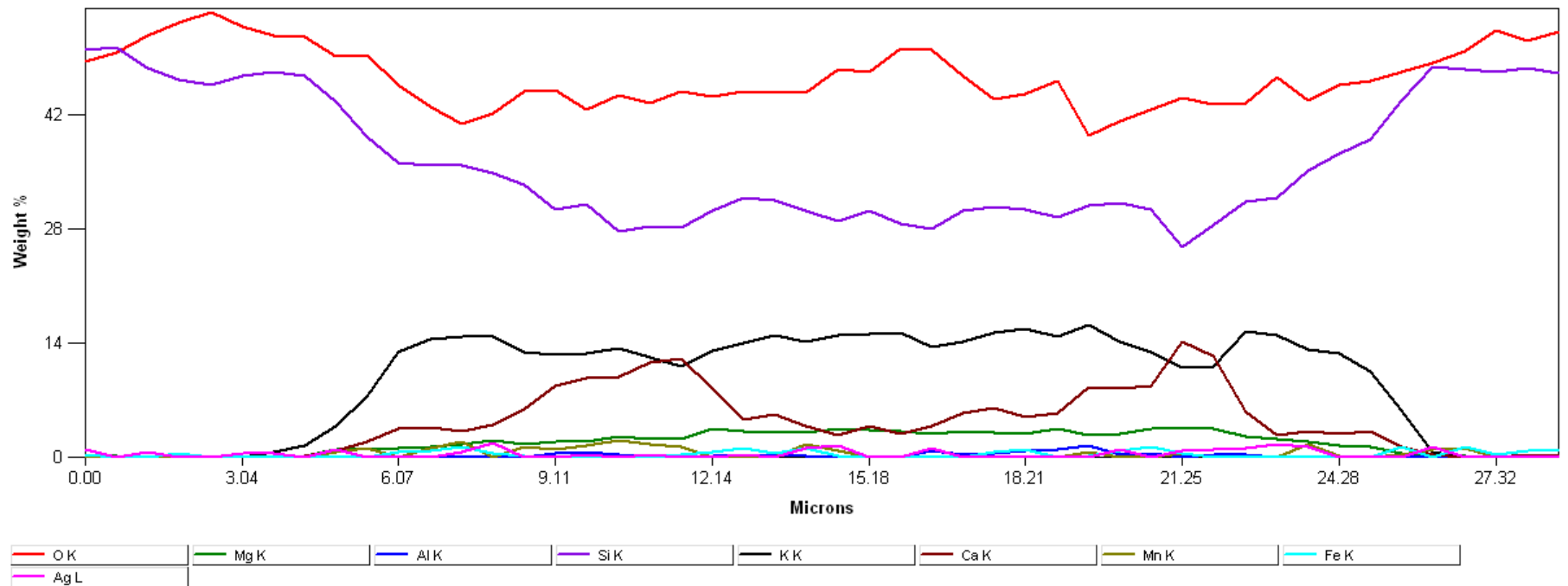
Project: SEMÅA-group 3



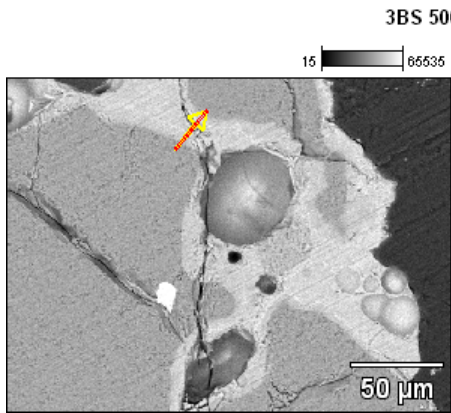
Accelerating Voltage: 15.0 kV

Magnification: 500

3BS 500x (1)Extract



Project: SEMÅA-group 3



Accelerating Voltage: 15.0 kV

Magnification: 500

3BS 500x (1)Extract

