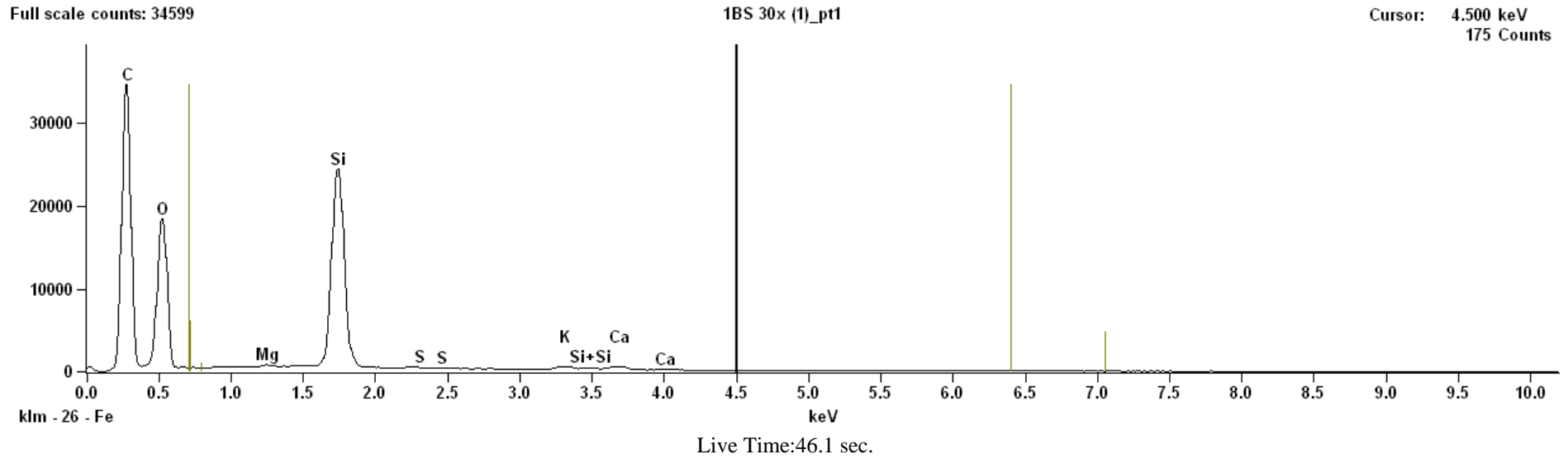


Project: SEMÅA-group 1



Acc.Voltage: 15.0 kV Take Off Angle: 34.7 deg.

Quantitative Results for: 1BS 30x (1)_pt1

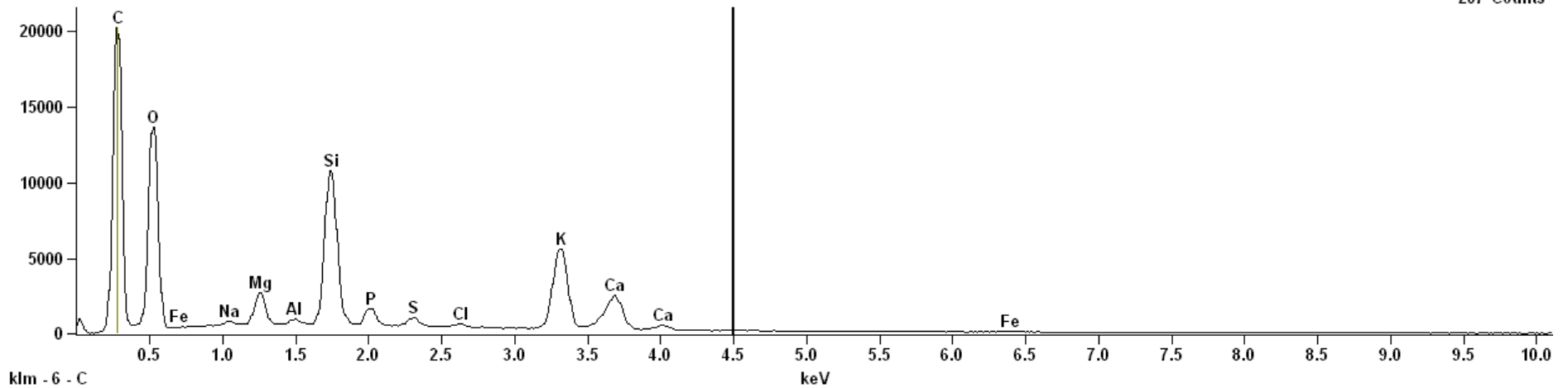
Element Line	Weight %	Weight % Error	Atom %	Formul a	Compnd %
O K	52.26S	---	66.15		---
Mg K	0.29	+/- 0.05	0.24	MgO	0.48
Si K	44.18	+/- 0.14	31.85	SiO2	94.51
S K	0.65	+/- 0.07	0.41	SO3	1.63
K K	1.50	+/- 0.10	0.78	K2O	1.81
Ca K	1.12	+/- 0.10	0.57	CaO	1.57
Total	100.00		100.00		100.00

Project: SEMÅA-group 1

Full scale counts: 20218

S5 50x area02

Cursor: 4.500 keV
207 Counts



Live Time:30.0 sec.

Acc.Voltage: 15.0 kV Take Off Angle: 35.0 deg.

Quantitative Results for: S5 50x area02

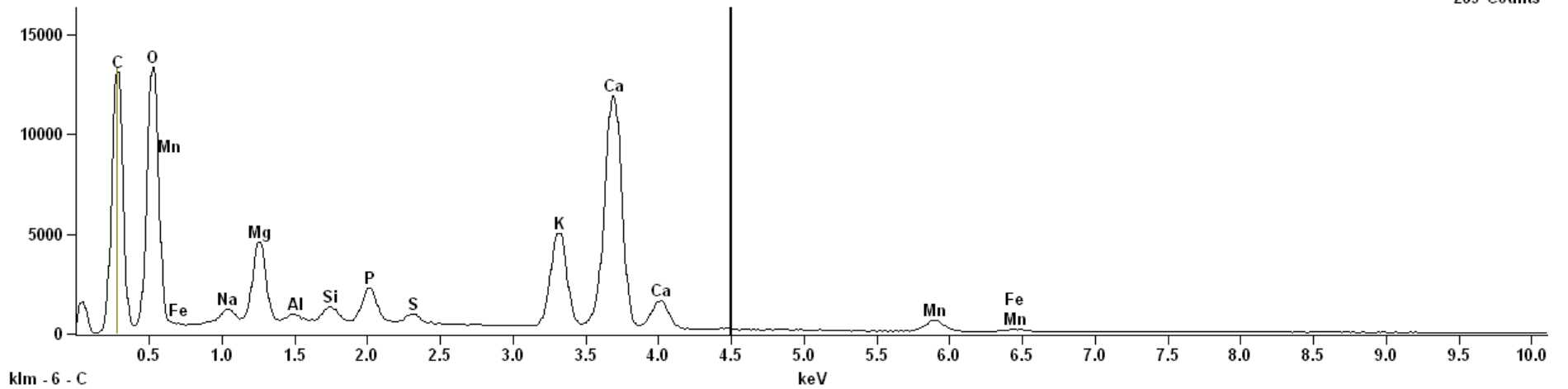
Element Line	Weight %	Weight % Error	Atom %	Formul a	Compnd %
O K	39.70S	---	57.62		---
Na K	0.83	+/- 0.06	0.84	Na2O	1.12
Mg K	3.32	+/- 0.07	3.18	MgO	5.51
Al K	0.51	+/- 0.04	0.44	Al2O3	0.97
Si K	18.84	+/- 0.11	15.58	SiO2	40.31
P K	2.96	+/- 0.12	2.22	P2O5	6.79
S K	1.95	+/- 0.04	1.41	SO3	4.86
Cl K	0.62	+/- 0.04	0.40	Cl	0.62
K K	20.27	+/- 0.17	12.04	K2O	24.41
Ca K	10.39	+/- 0.17	6.02	CaO	14.54
Fe K	0.61	+/- 0.11	0.25	Fe2O3	0.87
Total	100.00		100.00		100.00

Project: SEMÅA-group 1

Full scale counts: 13348

W7 50x area07

Cursor: 4.500 keV
269 Counts



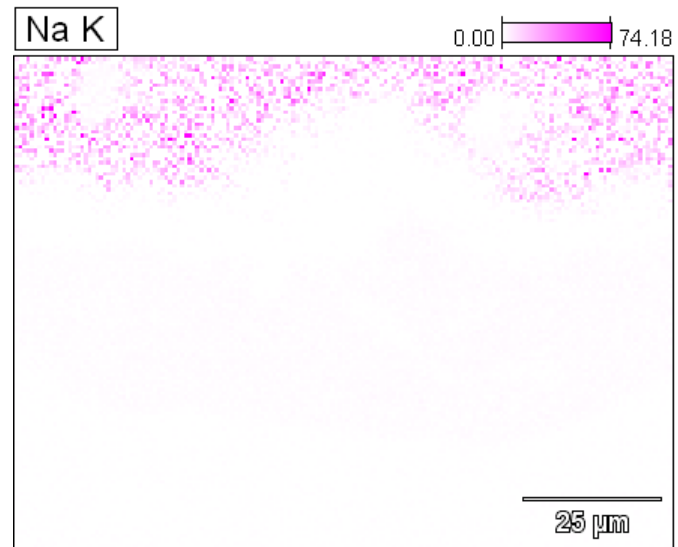
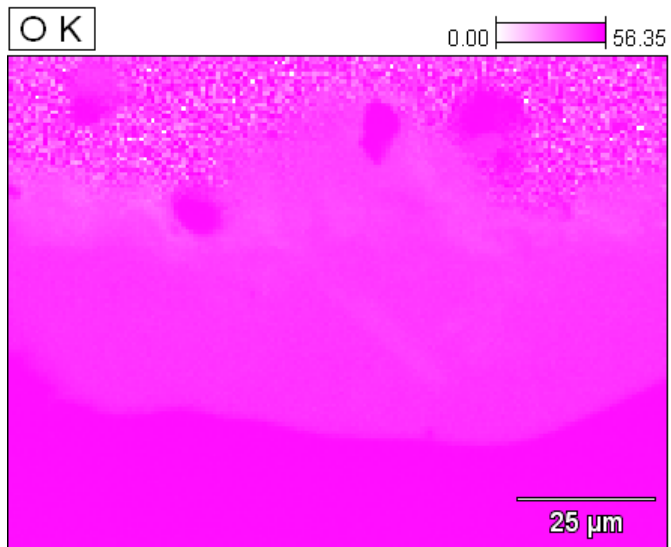
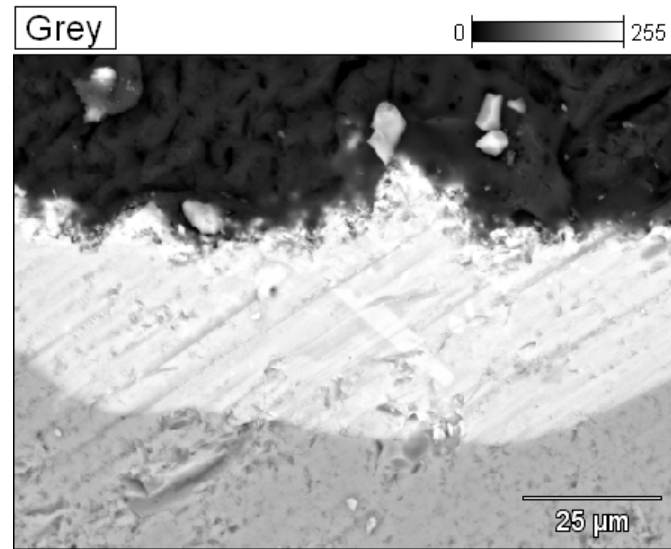
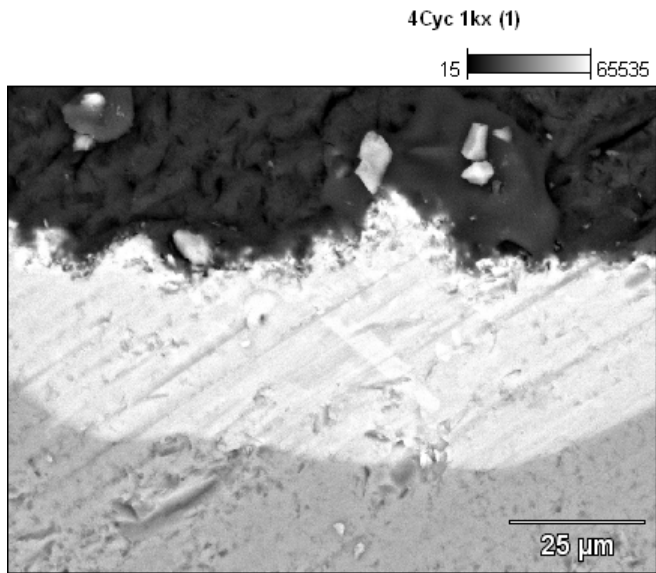
Live Time:30.0 sec.

Acc.Voltage: 15.0 kV Take Off Angle: 34.8 deg.

Quantitative Results for: W7 50x area07

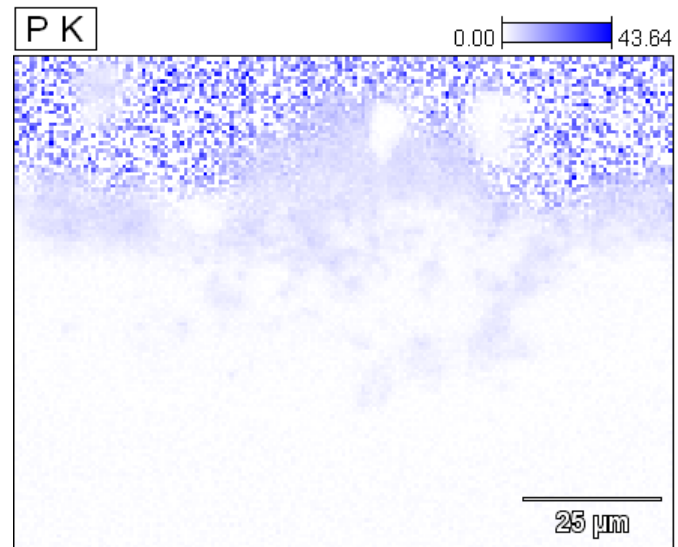
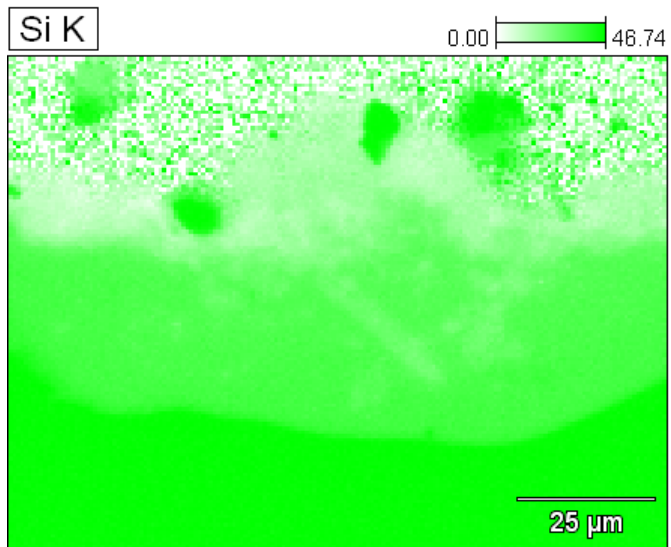
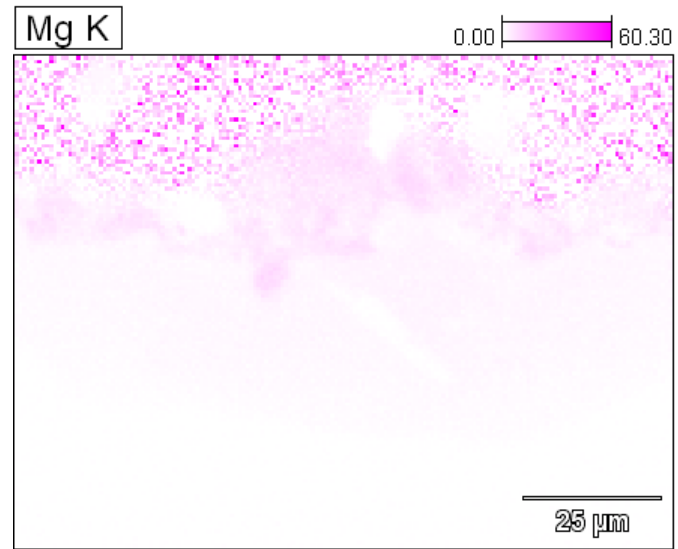
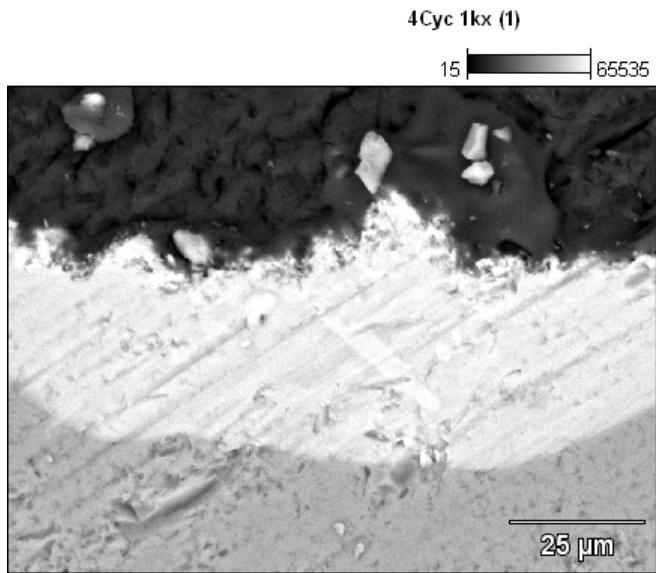
Element Line	Weight %	Weight % Error	Atom %	Formul a	Compnd %
O K	30.89S	---	50.91		---
Na K	1.57	+/- 0.09	1.80	Na2O	2.12
Mg K	5.75	+/- 0.07	6.24	MgO	9.54
Al K	0.40	+/- 0.03	0.39	Al2O3	0.75
Si K	1.10	+/- 0.06	1.03	SiO2	2.35
P K	3.06	+/- 0.07	2.60	P2O5	7.00
S K	0.93	+/- 0.03	0.76	SO3	2.32
K K	12.14	+/- 0.11	8.18	K2O	14.62
Ca K	38.75	+/- 0.20	25.49	CaO	54.21
Mn K	4.80	+/- 0.18	2.30	MnO	6.20
Fe K	0.62	+/- 0.09	0.29	Fe2O3	0.89
Total	100.00		100.00		100.00

Project: SEMÅA-group 1



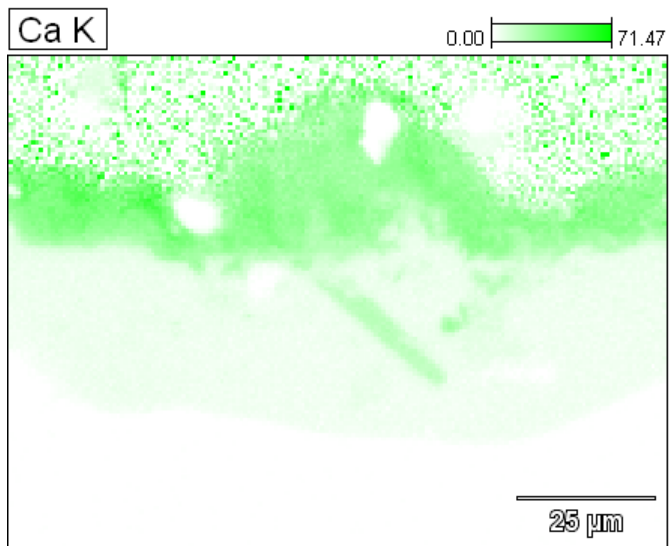
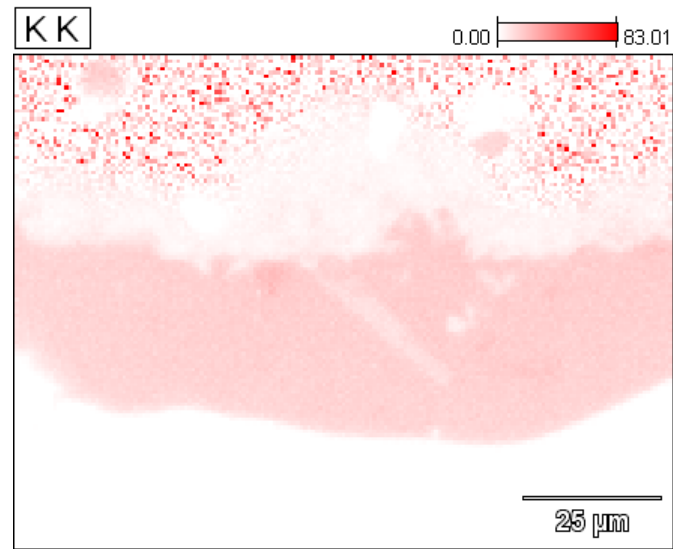
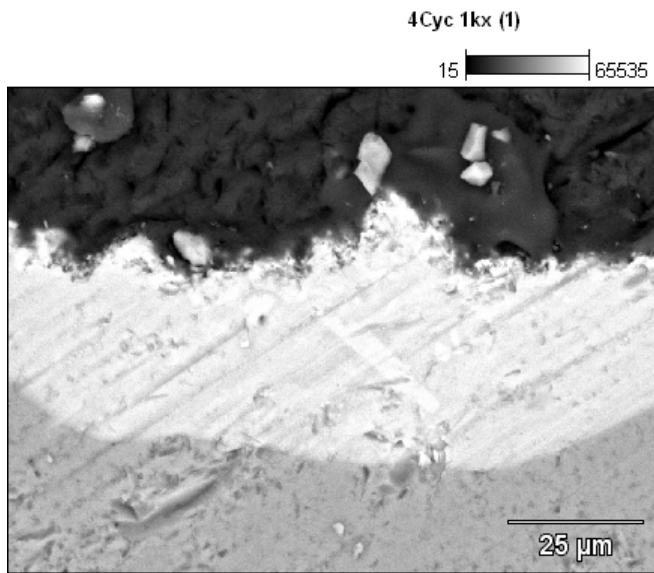
Data Type: Weight % Mag: 1000 Acc. Voltage: 20.0 kV

Project: SEMÅA-group 1



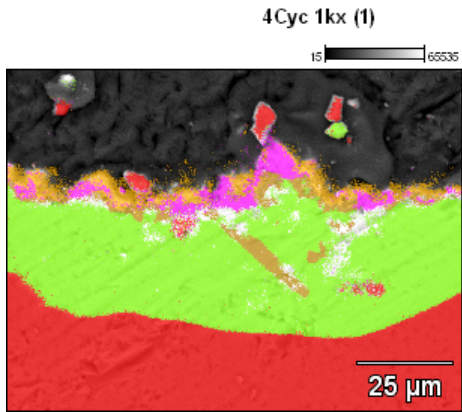
Data Type: Weight % Mag: 1000 Acc. Voltage: 20.0 kV

Project: SEMÅA-group 1



Data Type: Weight % Mag: 1000 Acc. Voltage: 20.0 kV

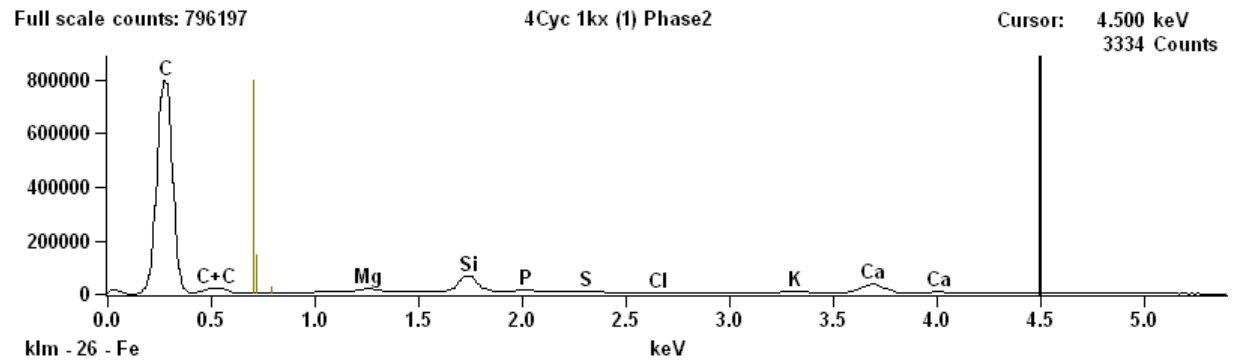
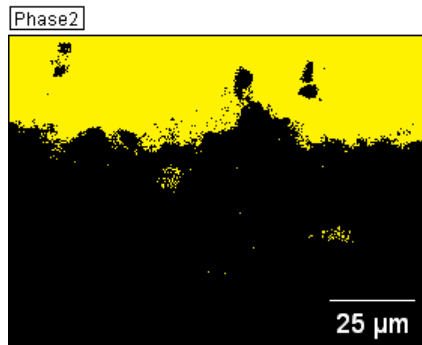
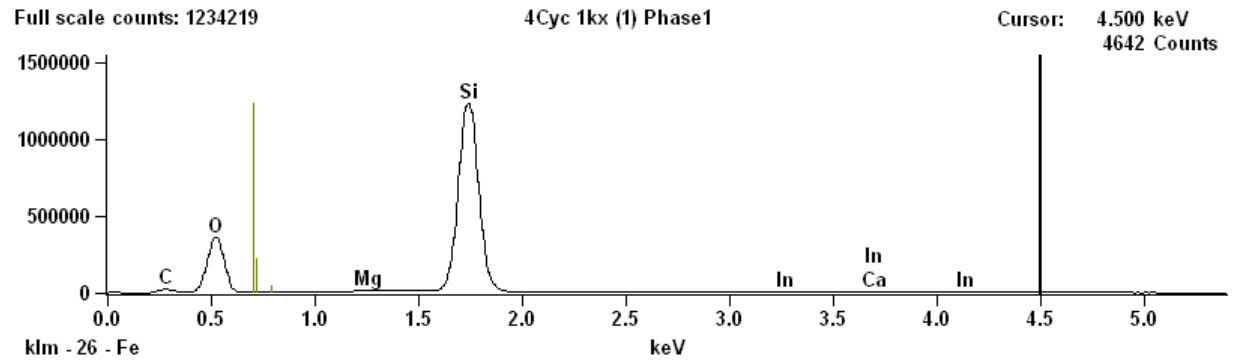
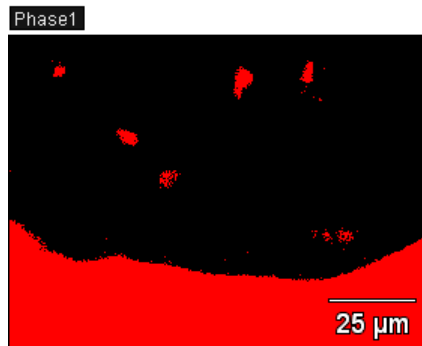
Project: SEMÅA-group 1



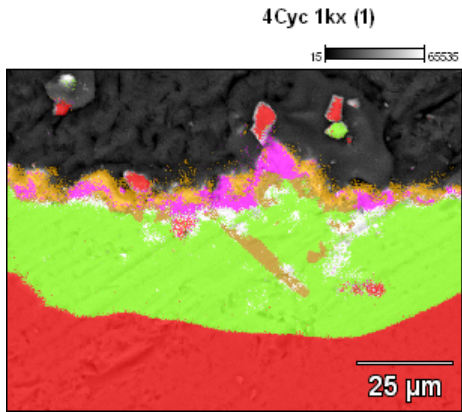
Accelerating Voltage: 20.0 kV

Magnification: 1000

Auto Phases From Counts



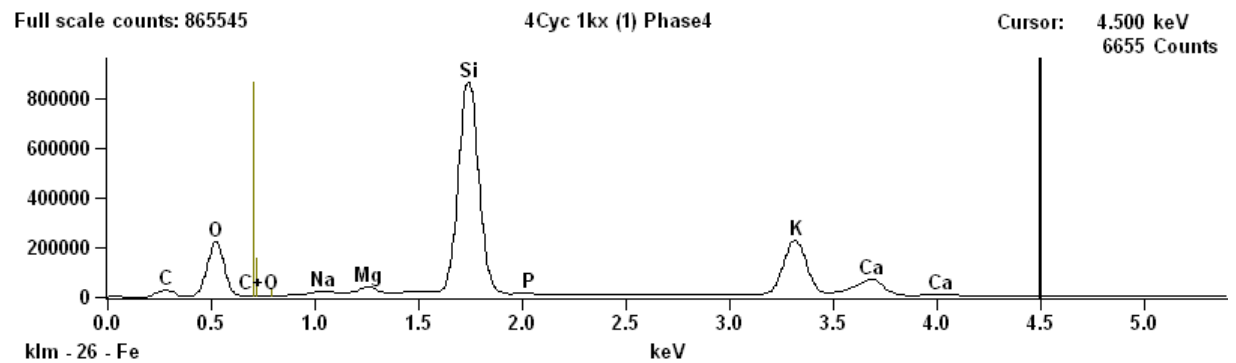
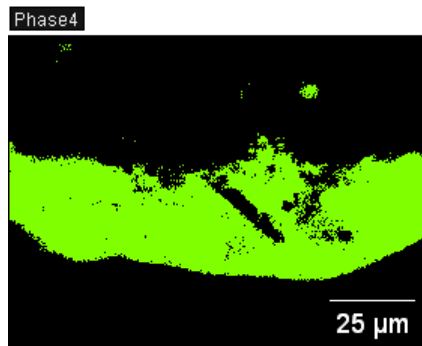
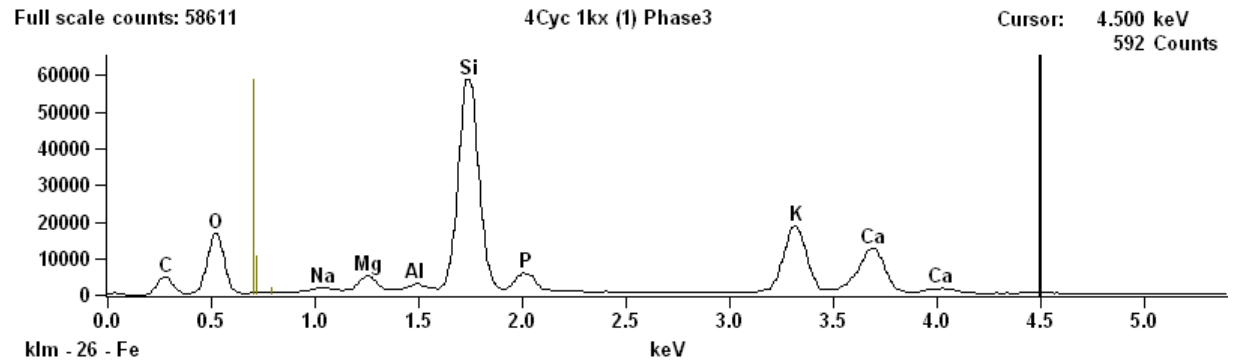
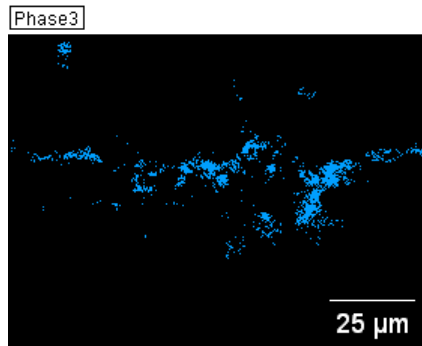
Project: SEMÅA-group 1



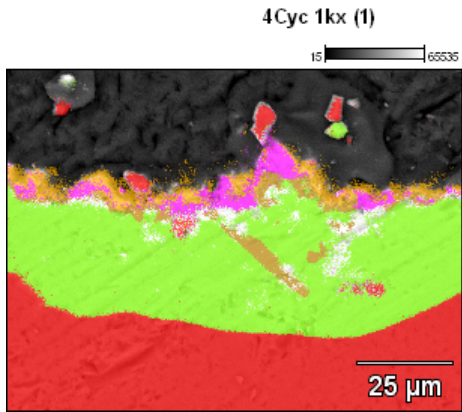
Accelerating Voltage: 20.0 kV

Magnification: 1000

Auto Phases From Counts



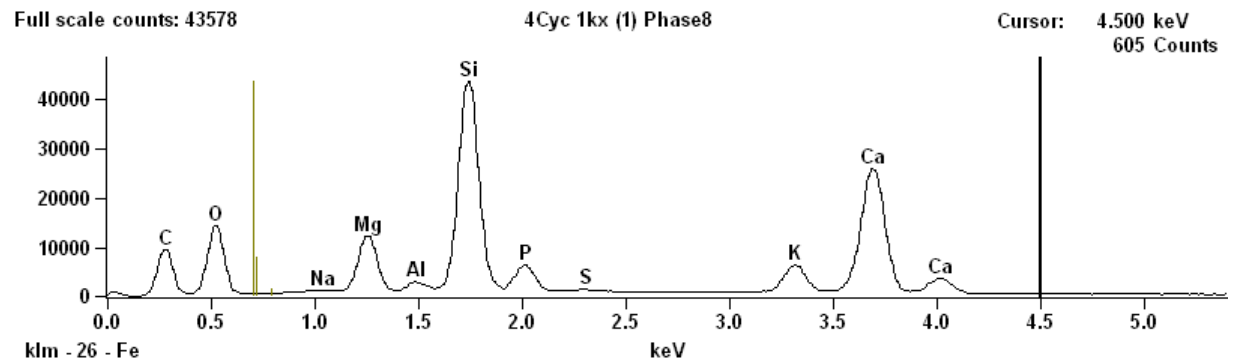
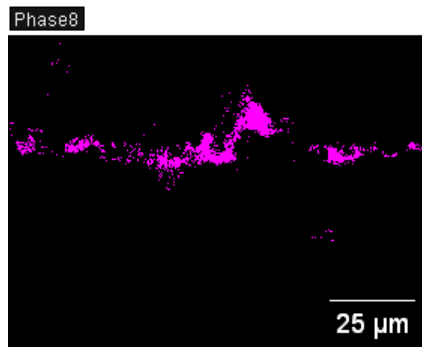
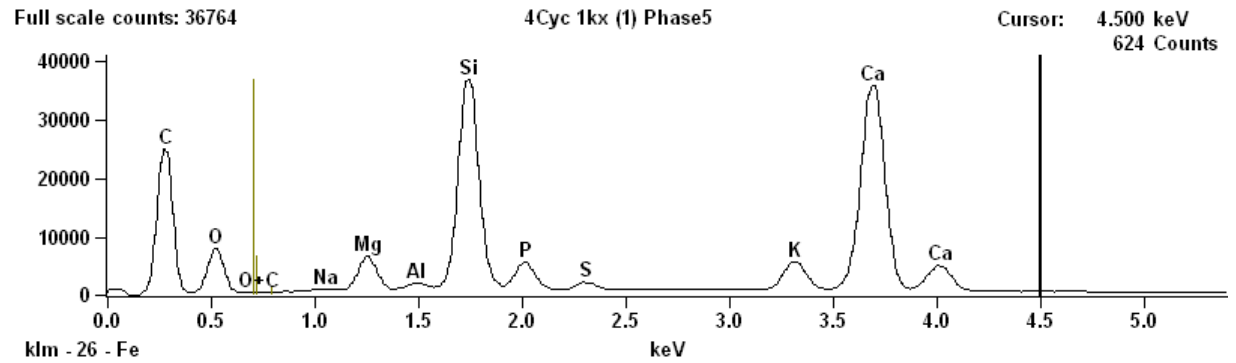
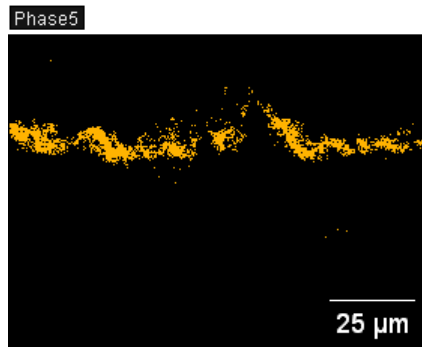
Project: SEMÅA-group 1



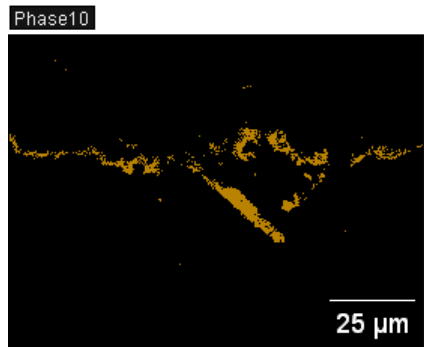
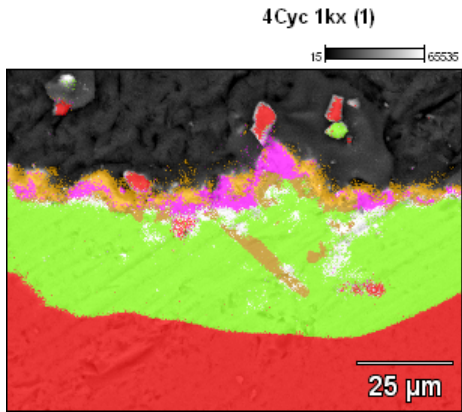
Accelerating Voltage: 20.0 kV

Magnification: 1000

Auto Phases From Counts



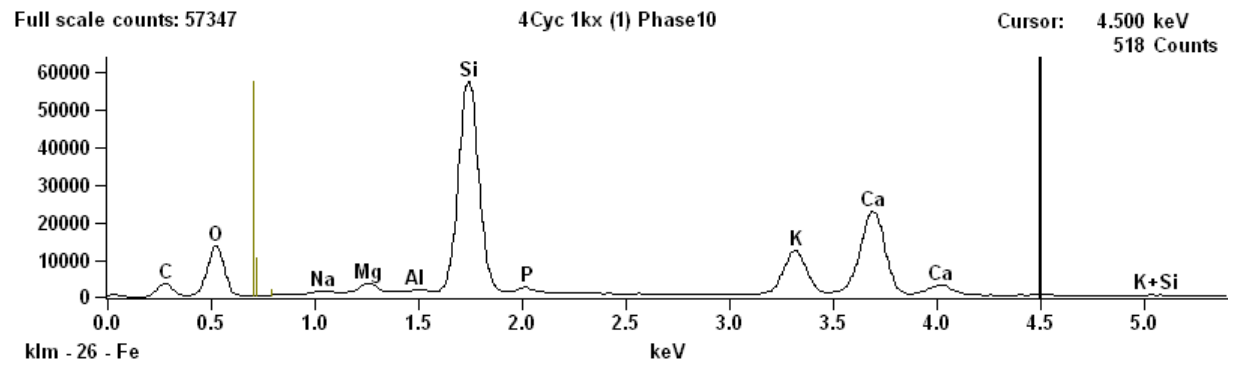
Project: SEMÅA-group 1



Accelerating Voltage: 20.0 kV

Magnification: 1000

Auto Phases From Counts



Project: SEMÅA-group 1

Quantitative Results for: 4Cyc 1kx (1) Phase1

<i>Element Line</i>	<i>Weight %</i>	<i>Weight % Error</i>	<i>Atom %</i>	<i>Formul a</i>	<i>Compnd %</i>
<i>O K</i>	53.05S	---	66.61		---
<i>Mg K</i>	0.04	+/- 0.00	0.04	MgO	0.07
<i>Si K</i>	46.52	+/- 0.09	33.28	SiO2	99.53
<i>Ca K</i>	0.04	+/- 0.01	0.02	CaO	0.06
<i>In L</i>	0.34	+/- 0.02	0.06	In	0.34
<i>Total</i>	100.00		100.00		100.00

Project: SEMÅA-group 1

Quantitative Results for: 4Cyc 1kx (1) Phase2

<i>Element Line</i>	<i>Weight %</i>	<i>Weight % Error</i>	<i>Atom %</i>	<i>Formul a</i>	<i>Compnd %</i>
<i>O K</i>	43.88S	---	61.36		---
<i>Mg K</i>	3.16	+/- 0.11	2.91	MgO	5.24
<i>Si K</i>	22.23	+/- 0.13	17.71	SiO2	47.57
<i>P K</i>	3.85	+/- 0.08	2.78	P2O5	8.81
<i>S K</i>	1.37	+/- 0.07	0.95	SO3	3.41
<i>Cl K</i>	0.10	+/- 0.06	0.06	Cl	0.10
<i>K K</i>	3.53	+/- 0.14	2.02	K2O	4.25
<i>Ca K</i>	21.89	+/- 0.19	12.22	CaO	30.63
<i>Total</i>	100.00		100.00		100.00

Project: SEMÅA-group 1

Quantitative Results for: 4Cyc 1kx (1) Phase3

<i>Element Line</i>	<i>Weight %</i>	<i>Weight % Error</i>	<i>Atom %</i>	<i>Formul a</i>	<i>Compnd %</i>
<i>O K</i>	43.12S	---	60.05		---
<i>Na K</i>	1.40	+/- 0.04	1.36	Na2O	1.89
<i>Mg K</i>	1.93	+/- 0.03	1.76	MgO	3.19
<i>Al K</i>	0.68	+/- 0.03	0.56	Al2O3	1.28
<i>Si K</i>	25.83	+/- 0.07	20.49	SiO2	55.27
<i>P K</i>	3.45	+/- 0.04	2.48	P2O5	7.91
<i>K K</i>	13.05	+/- 0.06	7.44	K2O	15.73
<i>Ca K</i>	10.53	+/- 0.06	5.85	CaO	14.74
<i>Total</i>	100.00		100.00		100.00

Project: SEMÅA-group 1

Quantitative Results for: 4Cyc 1kx (1) Phase4

<i>Element Line</i>	<i>Weight %</i>	<i>Weight % Error</i>	<i>Atom %</i>	<i>Formul a</i>	<i>Compnd %</i>
<i>O K</i>	44.42S	---	60.68		---
<i>Na K</i>	1.45	+/- 0.01	1.38	Na2O	1.96
<i>Mg K</i>	1.30	+/- 0.01	1.17	MgO	2.15
<i>Si K</i>	33.03	+/- 0.06	25.70	SiO2	70.66
<i>P K</i>	0.44	+/- 0.01	0.31	P2O5	1.00
<i>K K</i>	14.69	+/- 0.04	8.21	K2O	17.70
<i>Ca K</i>	4.66	+/- 0.02	2.54	CaO	6.52
<i>Total</i>	100.00		100.00		100.00

Project: SEMÅA-group 1

Quantitative Results for: 4Cyc 1kx (1) Phase5

<i>Element Line</i>	<i>Weight %</i>	<i>Weight % Error</i>	<i>Atom %</i>	<i>Formul a</i>	<i>Compnd %</i>
<i>O K</i>	40.57S	---	59.02		---
<i>Na K</i>	0.37	+/- 0.04	0.37	Na2O	0.50
<i>Mg K</i>	3.17	+/- 0.03	3.03	MgO	5.25
<i>Al K</i>	0.36	+/- 0.03	0.31	Al2O3	0.68
<i>Si K</i>	17.40	+/- 0.06	14.43	SiO2	37.23
<i>P K</i>	3.01	+/- 0.05	2.26	P2O5	6.89
<i>S K</i>	0.88	+/- 0.03	0.64	SO3	2.19
<i>K K</i>	3.40	+/- 0.04	2.03	K2O	4.10
<i>Ca K</i>	30.85	+/- 0.10	17.92	CaO	43.17
<i>Total</i>	100.00		100.00		100.00

Project: SEMÅA-group 1

Quantitative Results for: 4Cyc 1kx (1) Phase8

<i>Element Line</i>	<i>Weight %</i>	<i>Weight % Error</i>	<i>Atom %</i>	<i>Formul a</i>	<i>Compnd %</i>
<i>O K</i>	42.69S	---	59.82		---
<i>Na K</i>	0.57	+/- 0.04	0.56	Na2O	0.77
<i>Mg K</i>	5.84	+/- 0.04	5.39	MgO	9.69
<i>Al K</i>	0.67	+/- 0.04	0.56	Al2O3	1.26
<i>Si K</i>	20.46	+/- 0.07	16.33	SiO2	43.76
<i>P K</i>	3.55	+/- 0.05	2.57	P2O5	8.14
<i>S K</i>	0.41	+/- 0.03	0.29	SO3	1.03
<i>K K</i>	3.88	+/- 0.04	2.22	K2O	4.67
<i>Ca K</i>	21.93	+/- 0.08	12.26	CaO	30.68
<i>Total</i>	100.00		100.00		100.00

Project: SEMÅA-group 1

Quantitative Results for: 4Cyc 1kx (1) Phase10

<i>Element Line</i>	<i>Weight %</i>	<i>Weight % Error</i>	<i>Atom %</i>	<i>Formul a</i>	<i>Compnd %</i>
<i>O K</i>	42.14S	---	59.77		---
<i>Na K</i>	0.73	+/- 0.04	0.72	Na2O	0.99
<i>Mg K</i>	1.41	+/- 0.03	1.32	MgO	2.34
<i>Al K</i>	0.27	+/- 0.03	0.23	Al2O3	0.51
<i>Si K</i>	25.92	+/- 0.07	20.94	SiO2	55.45
<i>P K</i>	1.17	+/- 0.04	0.86	P2O5	2.68
<i>K K</i>	8.44	+/- 0.05	4.90	K2O	10.17
<i>Ca K</i>	19.91	+/- 0.08	11.27	CaO	27.85
<i>Total</i>	100.00		100.00		100.00

Project: SEMÅA-group 1

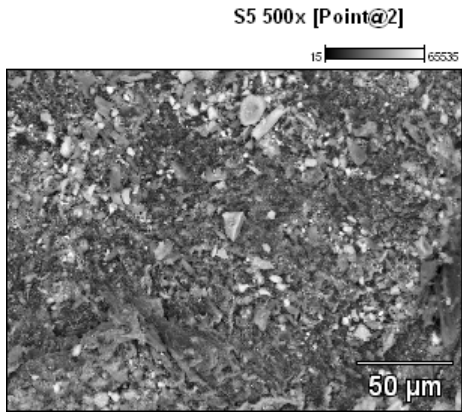
Segments

No segmentation data is available.

Combinations

<i>Combinations</i>	<i>Color</i>	<i>Area %</i>	<i>Combinations</i>
<i>Phase1</i>	Custom	27.81	C 1
<i>Phase2</i>	Custom	30.66	C 2, C 10, C 9, C 12
<i>Phase3</i>	Custom	2.67	C 3
<i>Phase4</i>	Custom	29.90	C 4
<i>Phase5</i>	Custom	3.64	C 6
<i>Phase8</i>	Custom	2.72	C 11
<i>Phase10</i>	Custom	2.61	C 14

Project: SEMÅA-group 1

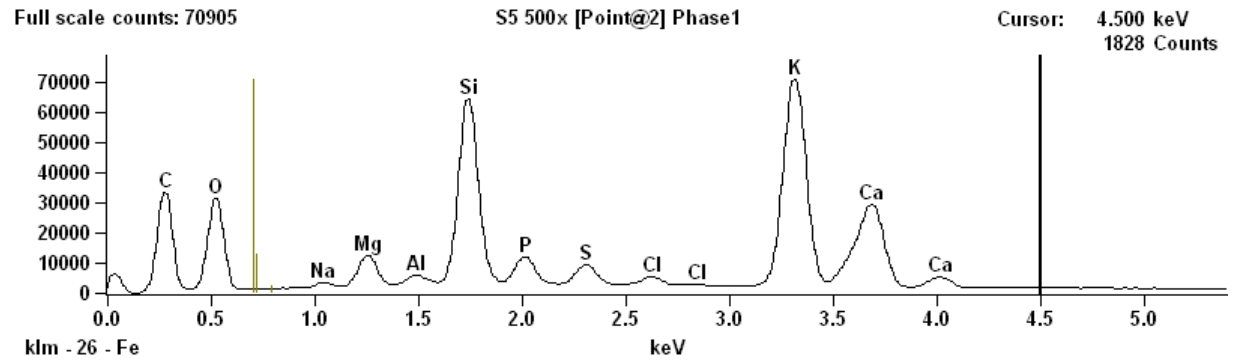
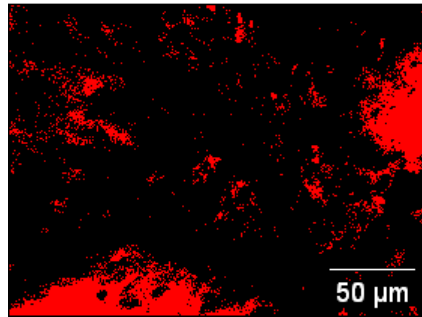


Accelerating Voltage: 20.0 kV

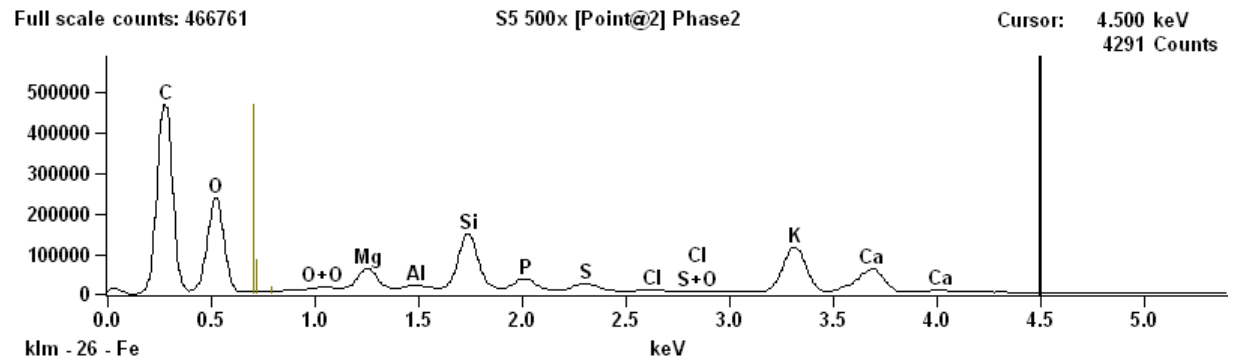
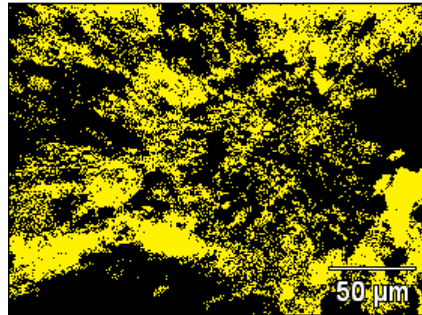
Magnification: 500

Auto Phases From Counts

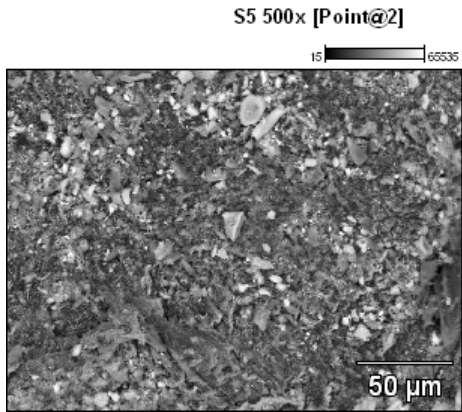
Phase1



Phase2



Project: SEMÅA-group 1

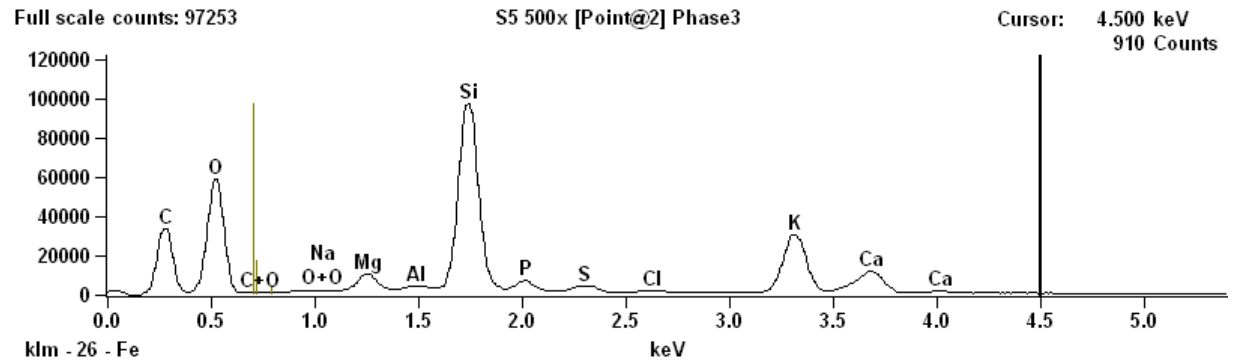
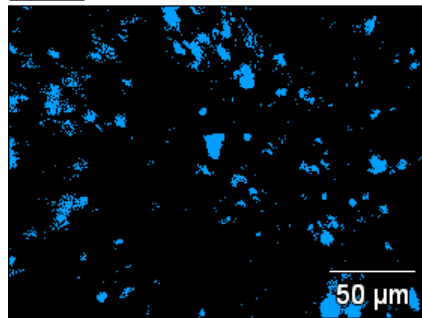


Accelerating Voltage: 20.0 kV

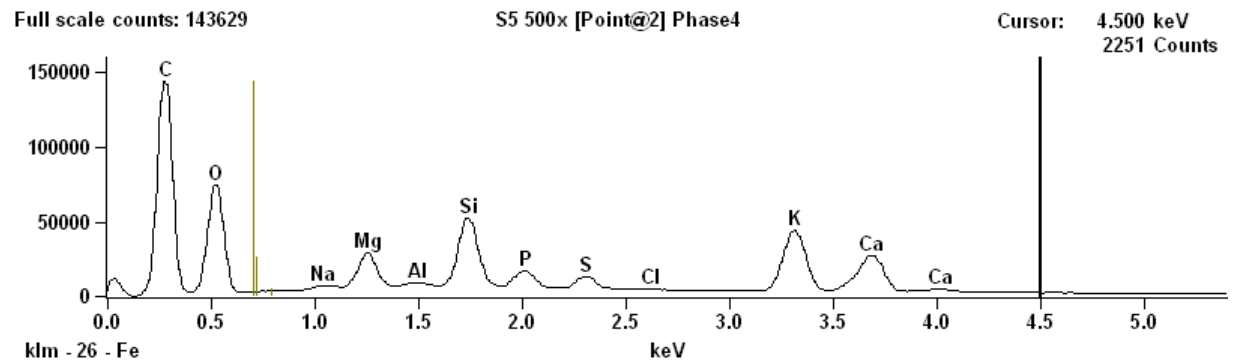
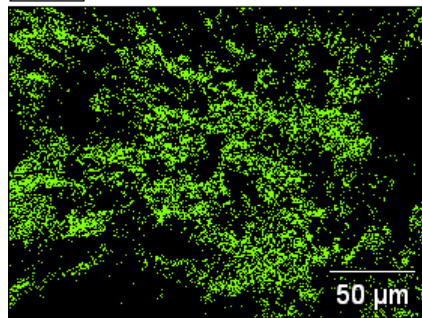
Magnification: 500

Auto Phases From Counts

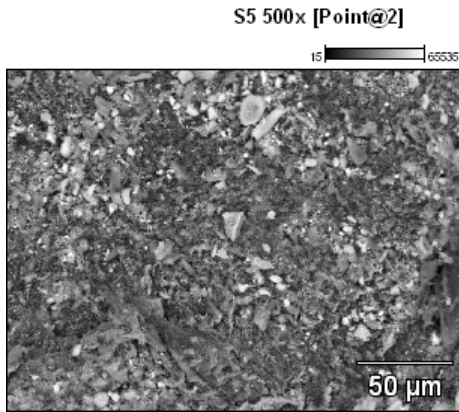
Phase3



Phase4



Project: SEMÅA-group 1

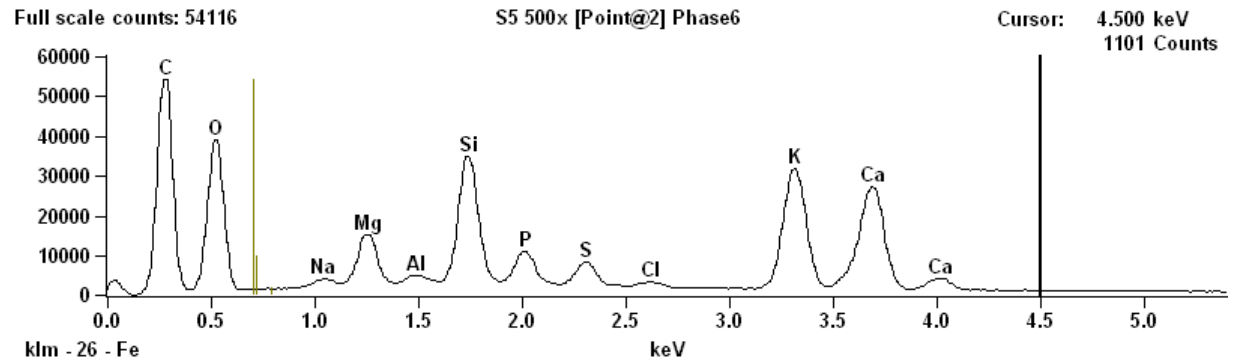
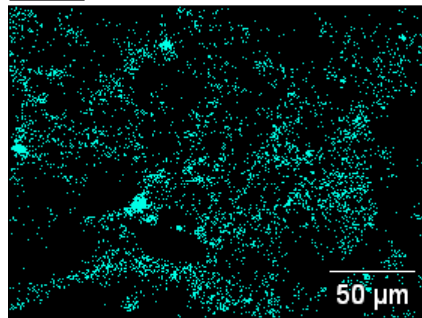


Accelerating Voltage: 20.0 kV

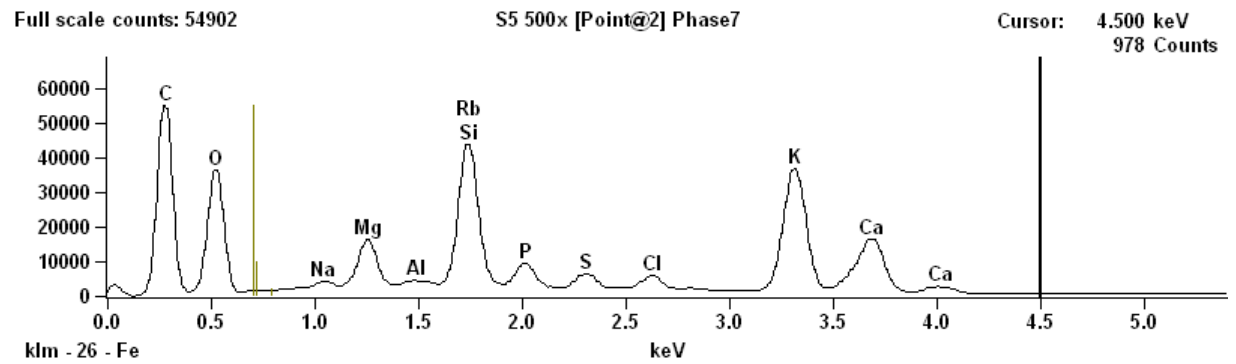
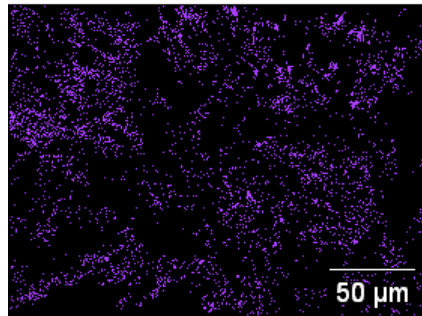
Magnification: 500

Auto Phases From Counts

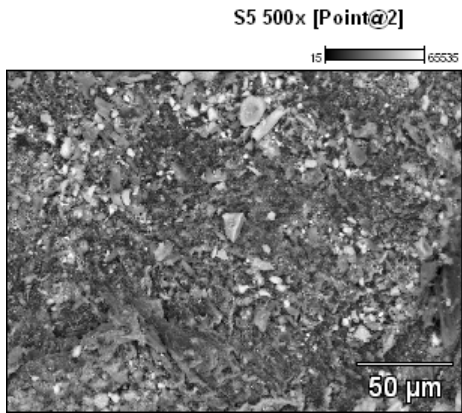
Phase6



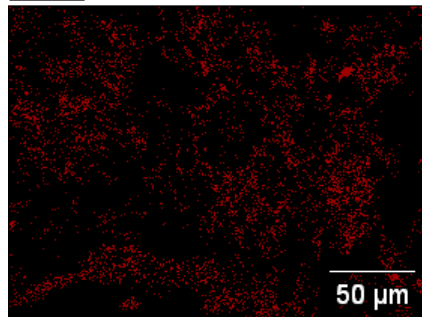
Phase7



Project: SEMÅA-group 1



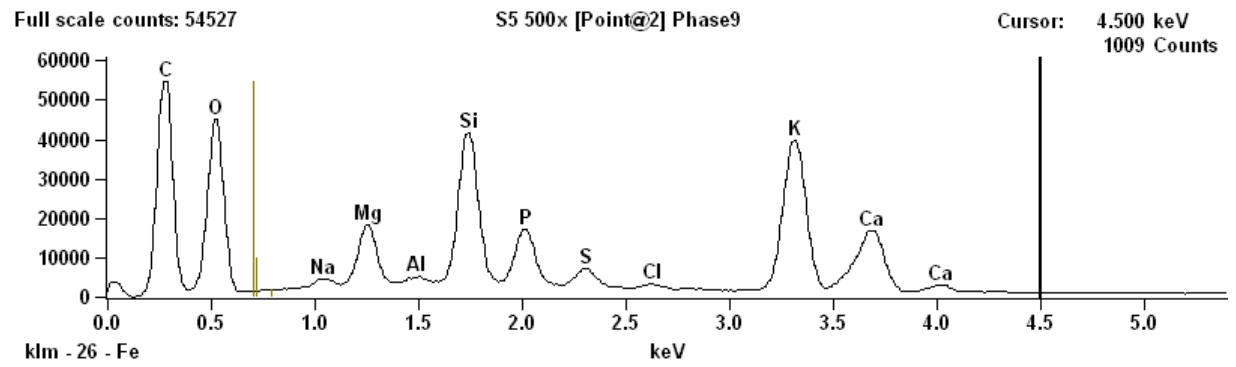
Phase9



Accelerating Voltage: 20.0 kV

Magnification: 500

Auto Phases From Counts



Project: SEMÅA-group 1

Quantitative Results for: S5 500x [Point@2] Phase1

<i>Element Line</i>	<i>Weight %</i>	<i>Weight % Error</i>	<i>Atom %</i>	<i>Formul a</i>	<i>Compnd %</i>
<i>O K</i>	36.65S	---	55.23		---
<i>Na K</i>	0.83	+/- 0.03	0.87	Na2O	1.12
<i>Mg K</i>	2.72	+/- 0.03	2.70	MgO	4.52
<i>Al K</i>	0.70	+/- 0.02	0.62	Al2O3	1.31
<i>Si K</i>	14.49	+/- 0.04	12.44	SiO2	31.01
<i>P K</i>	2.96	+/- 0.02	2.30	P2O5	6.78
<i>S K</i>	2.14	+/- 0.03	1.61	SO3	5.33
<i>Cl K</i>	0.86	+/- 0.02	0.58	Cl	0.86
<i>K K</i>	25.74	+/- 0.08	15.87	K2O	31.01
<i>Ca K</i>	12.91	+/- 0.06	7.77	CaO	18.06
<i>Total</i>	100.00		100.00		100.00

Project: SEMÅA-group 1

Quantitative Results for: S5 500x [Point@2] Phase2

<i>Element Line</i>	<i>Weight %</i>	<i>Weight % Error</i>	<i>Atom %</i>	<i>Formul a</i>	<i>Compnd %</i>
<i>O K</i>	39.84S	---	57.65		---
<i>Mg K</i>	5.91	+/- 0.03	5.63	MgO	9.80
<i>Al K</i>	0.67	+/- 0.03	0.57	Al ₂ O ₃	1.26
<i>Si K</i>	15.51	+/- 0.05	12.78	SiO ₂	33.17
<i>P K</i>	4.10	+/- 0.04	3.06	P ₂ O ₅	9.38
<i>S K</i>	2.58	+/- 0.03	1.87	SO ₃	6.45
<i>Cl K</i>	0.67	+/- 0.02	0.44	Cl	0.67
<i>K K</i>	19.02	+/- 0.06	11.26	K ₂ O	22.91
<i>Ca K</i>	11.63	+/- 0.03	6.72	CaO	16.27
<i>Ga K</i>	0.09	+/- 0.05	0.03	Ga	0.09
<i>Total</i>	100.00		100.00		100.00

Project: SEMÅA-group 1

Quantitative Results for: S5 500x [Point@2] Phase3

Element Line	Weight %	Weight % Error	Atom %	Formul a	Compnd %
O K	44.30S	---	60.98		---
Na K	0.13	+/- 0.02	0.12	Na2O	0.17
Mg K	2.62	+/- 0.03	2.38	MgO	4.35
Al K	0.42	+/- 0.03	0.35	Al2O3	0.80
Si K	27.70	+/- 0.07	21.72	SiO2	59.26
P K	2.30	+/- 0.02	1.63	P2O5	5.26
S K	1.51	+/- 0.03	1.04	SO3	3.77
Cl K	0.50	+/- 0.02	0.31	Cl	0.50
K K	14.51	+/- 0.06	8.17	K2O	17.48
Ca K	6.01	+/- 0.04	3.30	CaO	8.41
Total	100.00		100.00		100.00

Project: SEMÅA-group 1

Quantitative Results for: S5 500x [Point@2] Phase4

<i>Element Line</i>	<i>Weight %</i>	<i>Weight % Error</i>	<i>Atom %</i>	<i>Formul a</i>	<i>Compnd %</i>
<i>O K</i>	39.41S	---	57.00		---
<i>Na K</i>	1.37	+/- 0.05	1.38	Na2O	1.85
<i>Mg K</i>	6.81	+/- 0.05	6.48	MgO	11.29
<i>Al K</i>	0.69	+/- 0.04	0.59	Al2O3	1.31
<i>Si K</i>	13.20	+/- 0.05	10.88	SiO2	28.25
<i>P K</i>	4.25	+/- 0.02	3.17	P2O5	9.73
<i>S K</i>	2.97	+/- 0.04	2.14	SO3	7.41
<i>Cl K</i>	0.37	+/- 0.03	0.24	Cl	0.37
<i>K K</i>	17.88	+/- 0.07	10.58	K2O	21.54
<i>Ca K</i>	13.05	+/- 0.06	7.53	CaO	18.25
<i>Total</i>	100.00		100.00		100.00

Project: SEMÅA-group 1

Quantitative Results for: S5 500x [Point@2] Phase6

<i>Element Line</i>	<i>Weight %</i>	<i>Weight % Error</i>	<i>Atom %</i>	<i>Formul a</i>	<i>Compnd %</i>
<i>O K</i>	38.23S	---	56.40		---
<i>Na K</i>	1.32	+/- 0.05	1.35	Na2O	1.77
<i>Mg K</i>	5.25	+/- 0.04	5.10	MgO	8.70
<i>Al K</i>	0.74	+/- 0.04	0.65	Al2O3	1.40
<i>Si K</i>	11.87	+/- 0.05	9.98	SiO2	25.39
<i>P K</i>	3.99	+/- 0.06	3.04	P2O5	9.13
<i>S K</i>	2.92	+/- 0.04	2.15	SO3	7.29
<i>Cl K</i>	0.75	+/- 0.03	0.50	Cl	0.75
<i>K K</i>	17.12	+/- 0.07	10.34	K2O	20.63
<i>Ca K</i>	17.83	+/- 0.08	10.50	CaO	24.94
<i>Total</i>	100.00		100.00		100.00

Project: SEMÅA-group 1

Quantitative Results for: S5 500x [Point@2] Phase7

<i>Element Line</i>	<i>Weight %</i>	<i>Weight % Error</i>	<i>Atom %</i>	<i>Formul a</i>	<i>Compnd %</i>
<i>O K</i>	39.25S	---	56.89		---
<i>Na K</i>	1.12	+/- 0.06	1.13	Na2O	1.51
<i>Mg K</i>	5.60	+/- 0.05	5.34	MgO	9.28
<i>Al K</i>	0.51	+/- 0.05	0.44	Al2O3	0.96
<i>Si K</i>	16.23	+/- 0.18	13.40	SiO2	34.72
<i>P K</i>	3.38	+/- 0.08	2.53	P2O5	7.75
<i>S K</i>	2.26	+/- 0.05	1.63	SO3	5.63
<i>Cl K</i>	0.50	+/- 0.04	0.33	Cl	0.50
<i>K K</i>	20.26	+/- 0.09	12.02	K2O	24.41
<i>Ca K</i>	10.88	+/- 0.08	6.30	CaO	15.23
<i>Rb L</i>	0.01	+/- 0.28	0.00	Rb	0.01
<i>Total</i>	100.00		100.00		100.00

Project: SEMÅA-group 1

Quantitative Results for: S5 500x [Point@2] Phase9

<i>Element Line</i>	<i>Weight %</i>	<i>Weight % Error</i>	<i>Atom %</i>	<i>Formul a</i>	<i>Compnd %</i>
<i>O K</i>	39.51S	---	57.22		---
<i>Na K</i>	1.32	+/- 0.05	1.33	Na2O	1.77
<i>Mg K</i>	5.58	+/- 0.04	5.32	MgO	9.26
<i>Al K</i>	0.49	+/- 0.02	0.42	Al2O3	0.92
<i>Si K</i>	13.16	+/- 0.05	10.86	SiO2	28.16
<i>P K</i>	6.46	+/- 0.03	4.84	P2O5	14.81
<i>S K</i>	2.23	+/- 0.03	1.61	SO3	5.57
<i>Cl K</i>	0.50	+/- 0.01	0.33	Cl	0.50
<i>K K</i>	20.62	+/- 0.08	12.22	K2O	24.84
<i>Ca K</i>	10.12	+/- 0.06	5.85	CaO	14.16
<i>Total</i>	100.00		100.00		100.00

Project: SEMÅA-group 1

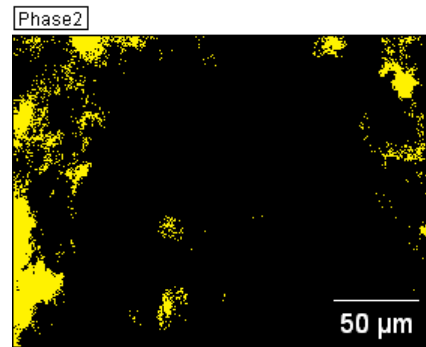
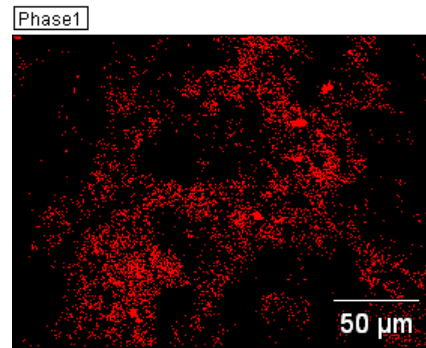
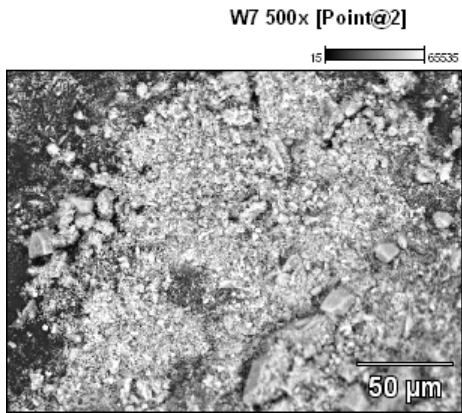
Segments

No segmentation data is available.

Combinations

<i>Combinations</i>	<i>Color</i>	<i>Area %</i>	<i>Combinations</i>
<i>Phase1</i>	Custom	12.68	C 1
<i>Phase2</i>	Custom	36.73	C 2, C 6
<i>Phase3</i>	Custom	6.60	C 3
<i>Phase4</i>	Custom	18.28	C 5
<i>Phase6</i>	Custom	8.81	C 8
<i>Phase7</i>	Custom	8.07	C 9, C 10
<i>Phase9</i>	Custom	8.84	C 12

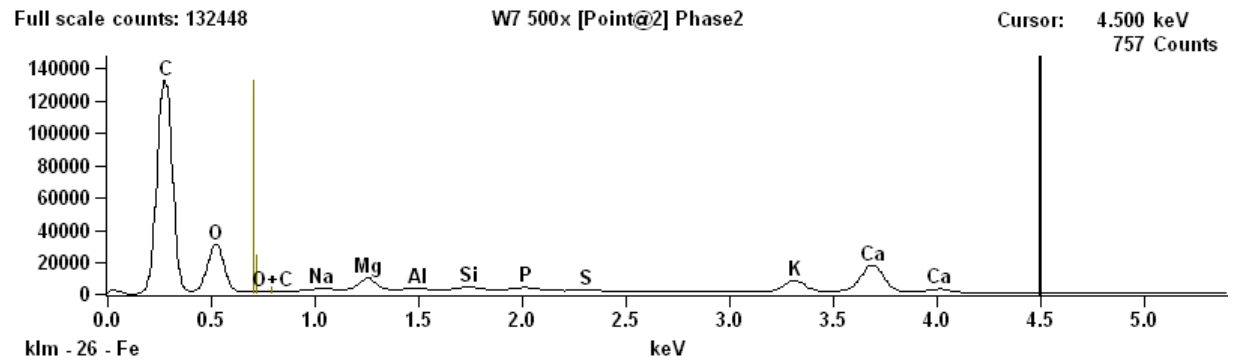
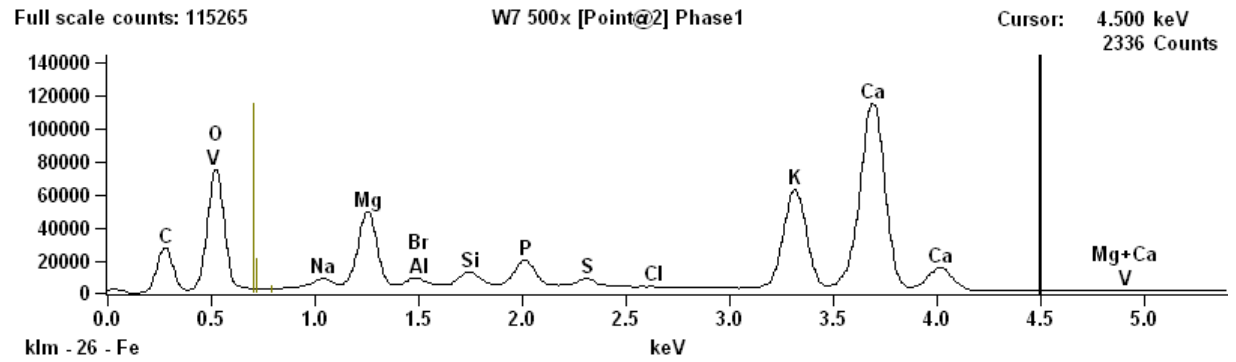
Project: SEMÅA-group 1



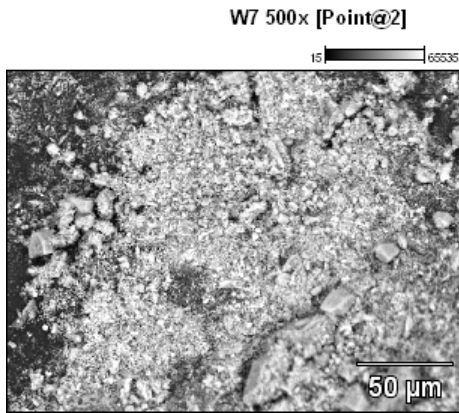
Accelerating Voltage: 20.0 kV

Magnification: 500

Auto Phases From Counts



Project: SEMÅA-group 1

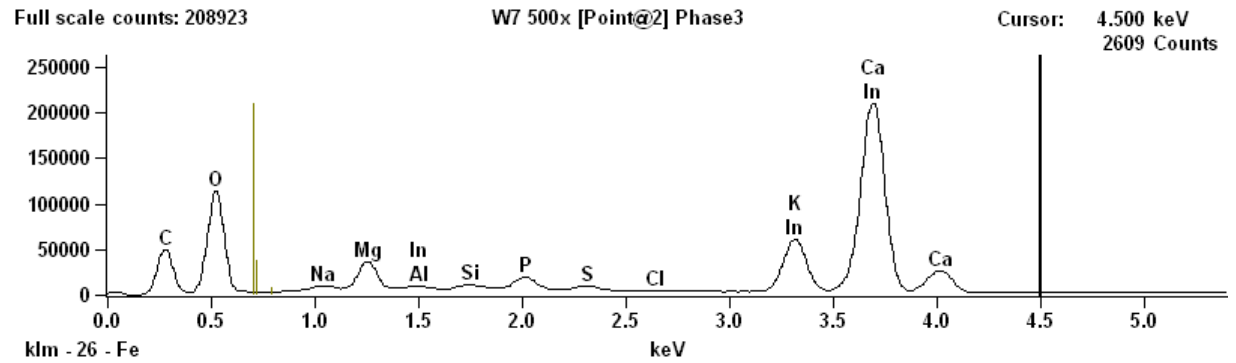
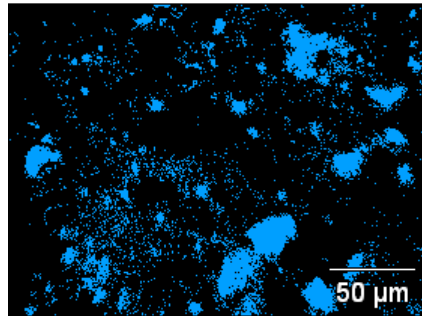


Accelerating Voltage: 20.0 kV

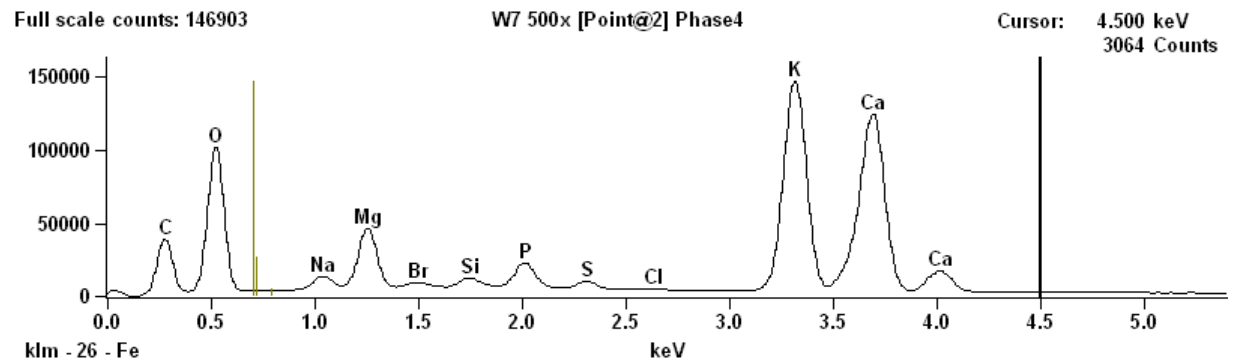
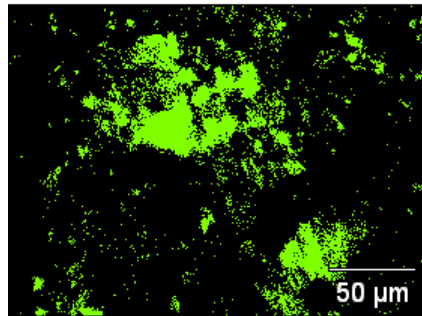
Magnification: 500

Auto Phases From Counts

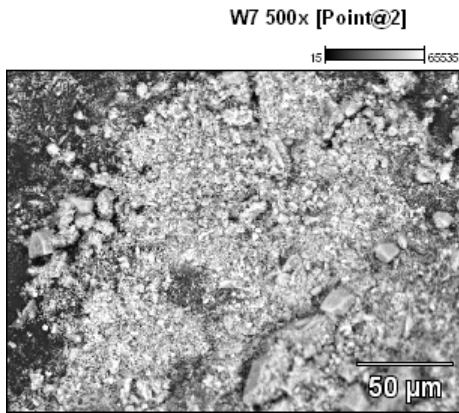
Phase3



Phase4



Project: SEMÅA-group 1

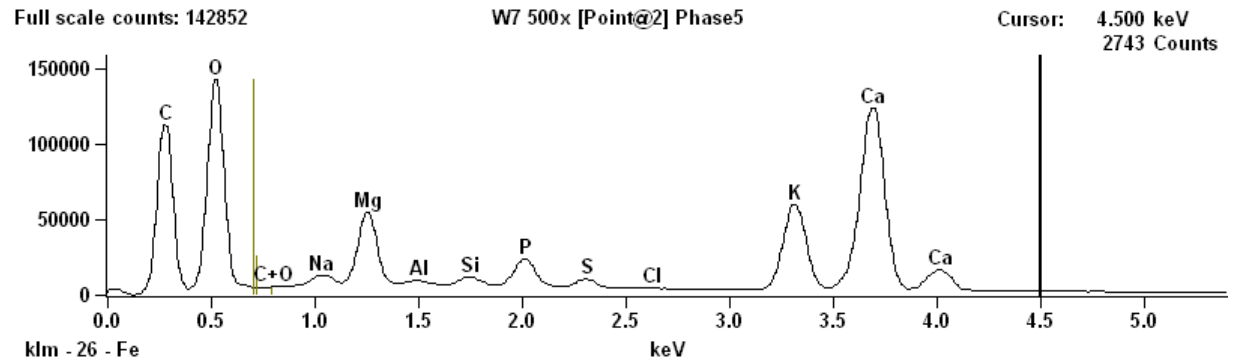
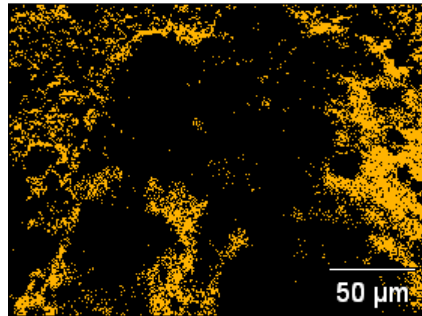


Accelerating Voltage: 20.0 kV

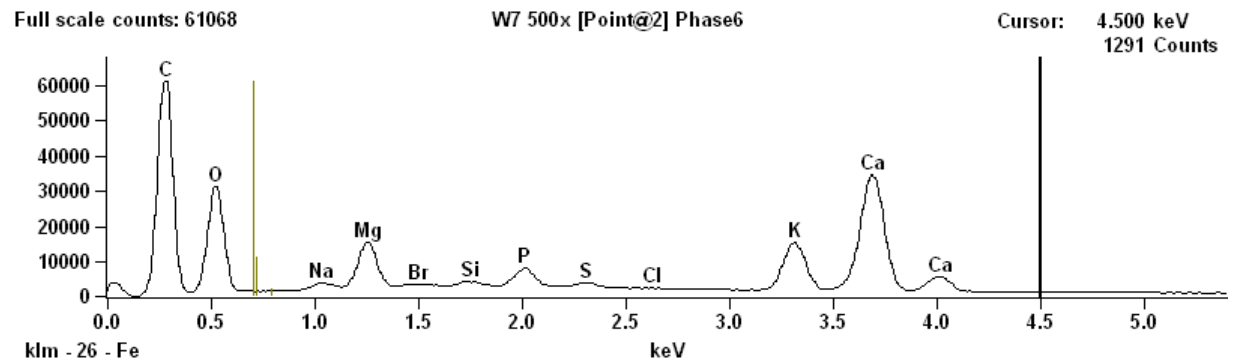
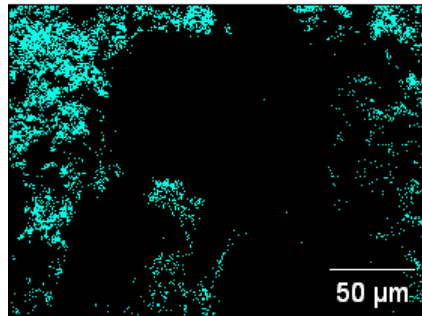
Magnification: 500

Auto Phases From Counts

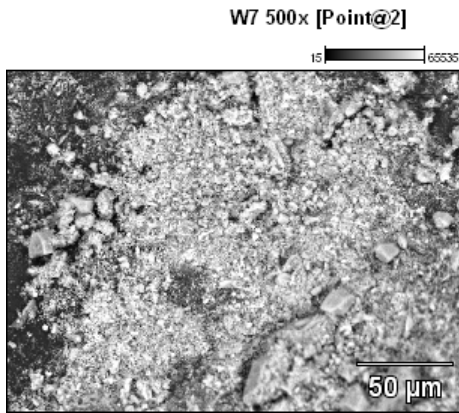
Phase5



Phase6



Project: SEMÅA-group 1

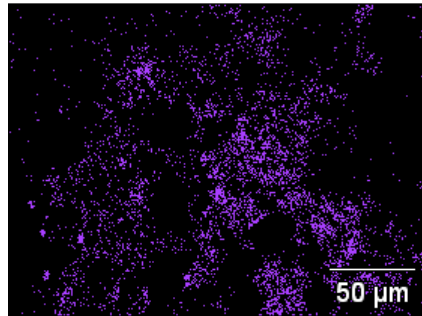


Accelerating Voltage: 20.0 kV

Magnification: 500

Auto Phases From Counts

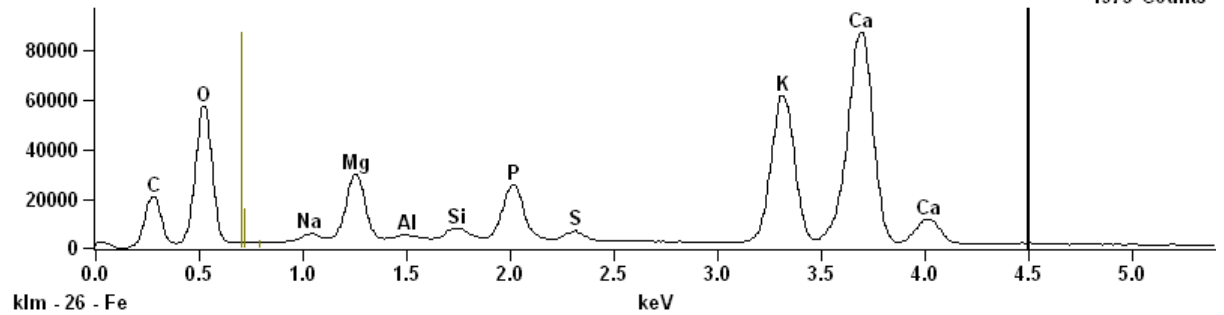
Phase7



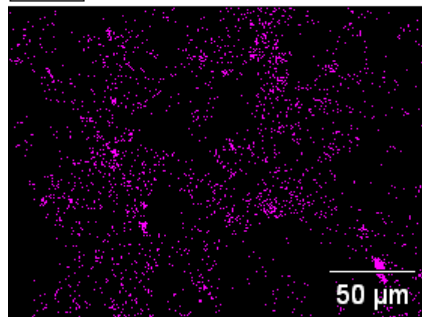
Full scale counts: 87318

W7 500x [Point@2] Phase7

Cursor: 4.500 keV
1975 Counts



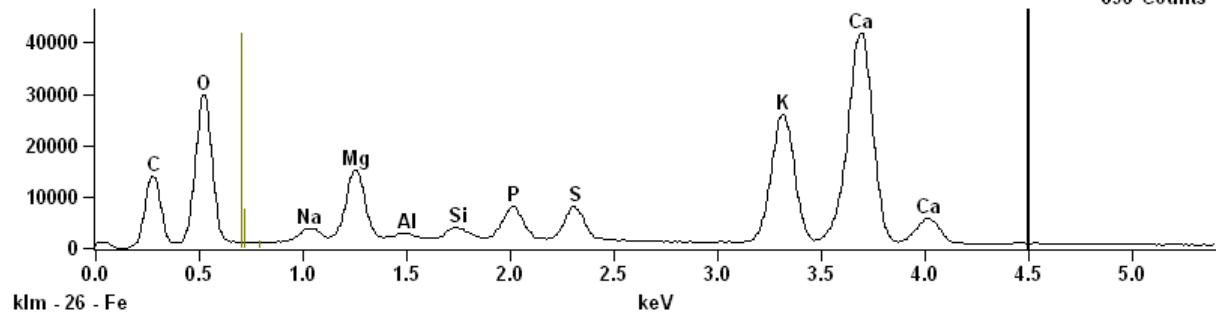
Phase8



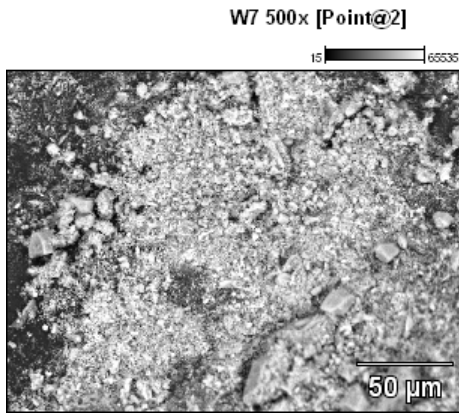
Full scale counts: 41687

W7 500x [Point@2] Phase8

Cursor: 4.500 keV
896 Counts



Project: SEMÅA-group 1

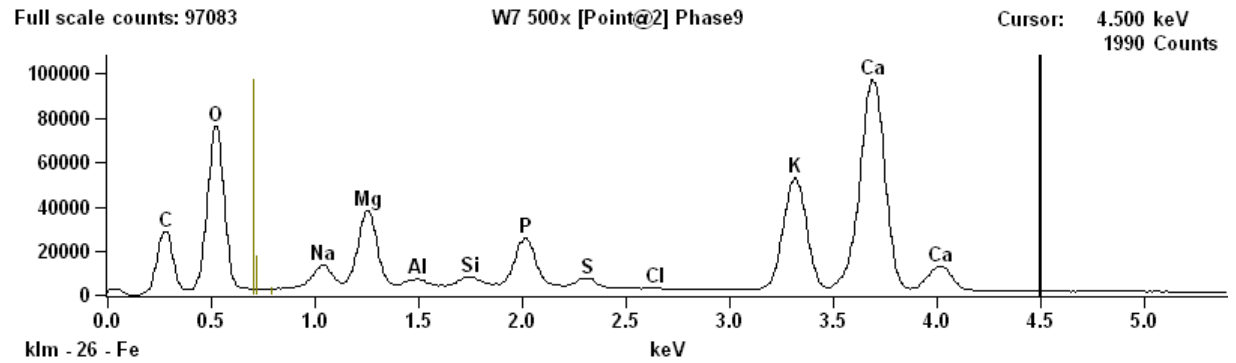
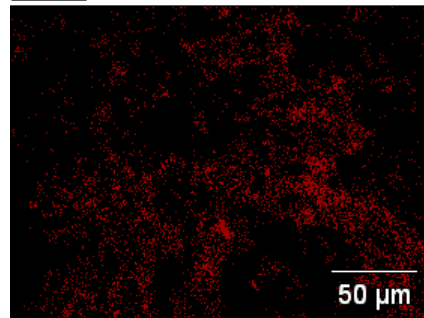


Accelerating Voltage: 20.0 kV

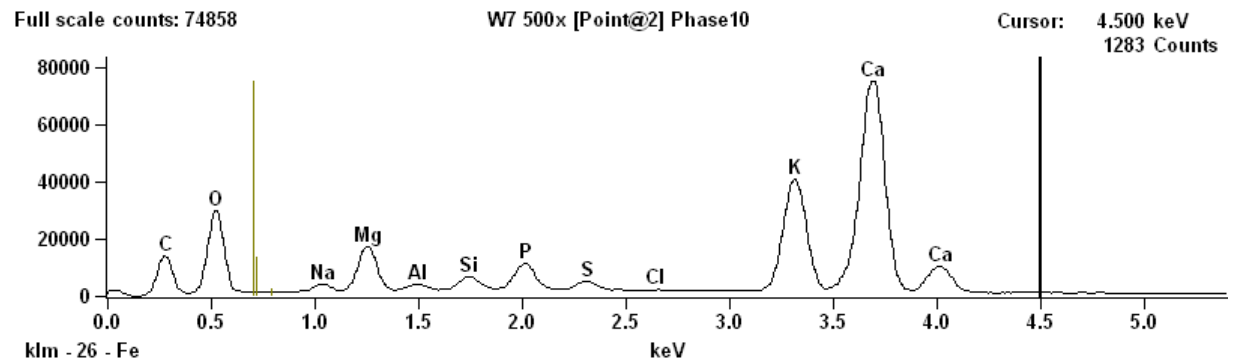
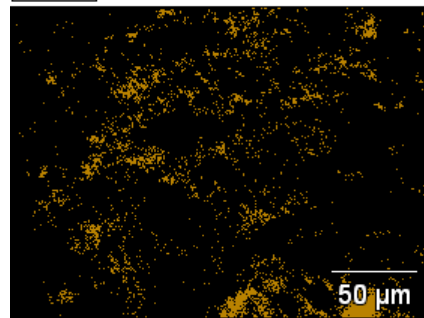
Magnification: 500

Auto Phases From Counts

Phase9



Phase10



Project: SEMÅA-group 1

Quantitative Results for: W7 500x [Point@2] Phase1

<i>Element Line</i>	<i>Weight %</i>	<i>Weight % Error</i>	<i>Atom %</i>	<i>Formul a</i>	<i>Compnd %</i>
<i>O K</i>	31.72S	---	50.59		---
<i>Na K</i>	1.68	+/- 0.03	1.87	Na2O	2.27
<i>Mg K</i>	8.97	+/- 0.04	9.42	MgO	14.87
<i>Al K</i>	0.61	+/- 0.02	0.58	Al2O3	1.15
<i>Si K</i>	1.51	+/- 0.02	1.37	SiO2	3.23
<i>P K</i>	3.21	+/- 0.03	2.65	P2O5	7.37
<i>S K</i>	0.94	+/- 0.02	0.75	SO3	2.36
<i>Cl K</i>	0.09	+/- 0.01	0.07	Cl	0.09
<i>K K</i>	14.63	+/- 0.05	9.55	K2O	17.62
<i>Ca K</i>	36.09	+/- 0.09	22.98	CaO	50.50
<i>V K</i>	0.06	+/- 0.01	0.03	V	0.06
<i>Br L</i>	0.49	+/- 0.06	0.16	Br	0.49
<i>Total</i>	100.00		100.00		100.00

Project: SEMÅA-group 1

Quantitative Results for: W7 500x [Point@2] Phase2

<i>Element Line</i>	<i>Weight %</i>	<i>Weight % Error</i>	<i>Atom %</i>	<i>Formul a</i>	<i>Compnd %</i>
<i>O K</i>	34.09S	---	52.32		---
<i>Na K</i>	3.08	+/- 0.13	3.29	Na2O	4.15
<i>Mg K</i>	9.02	+/- 0.10	9.11	MgO	14.96
<i>Al K</i>	1.20	+/- 0.09	1.10	Al2O3	2.28
<i>Si K</i>	3.61	+/- 0.09	3.16	SiO2	7.73
<i>P K</i>	3.59	+/- 0.11	2.84	P2O5	8.22
<i>S K</i>	1.27	+/- 0.07	0.97	SO3	3.16
<i>K K</i>	11.57	+/- 0.10	7.27	K2O	13.94
<i>Ca K</i>	32.57	+/- 0.16	19.95	CaO	45.57
<i>Total</i>	100.00		100.00		100.00

Project: SEMÅA-group 1

Quantitative Results for: W7 500x [Point@2] Phase3

<i>Element Line</i>	<i>Weight %</i>	<i>Weight % Error</i>	<i>Atom %</i>	<i>Formul a</i>	<i>Compnd %</i>
<i>O K</i>	30.31S	---	50.20		---
<i>Na K</i>	1.60	+/- 0.03	1.85	Na2O	2.16
<i>Mg K</i>	4.86	+/- 0.03	5.30	MgO	8.06
<i>Al K</i>	0.35	+/- 0.01	0.35	Al2O3	0.66
<i>Si K</i>	0.74	+/- 0.02	0.70	SiO2	1.58
<i>P K</i>	2.23	+/- 0.02	1.90	P2O5	5.10
<i>S K</i>	0.72	+/- 0.02	0.59	SO3	1.79
<i>Cl K</i>	0.08	+/- 0.01	0.06	Cl	0.08
<i>K K</i>	10.09	+/- 0.08	6.84	K2O	12.15
<i>Ca K</i>	48.56	+/- 0.12	32.11	CaO	67.95
<i>In L</i>	0.47	+/- 0.27	0.11	In	0.47
<i>Total</i>	100.00		100.00		100.00

Project: SEMÅA-group 1

Quantitative Results for: W7 500x [Point@2] Phase4

<i>Element Line</i>	<i>Weight %</i>	<i>Weight % Error</i>	<i>Atom %</i>	<i>Formul a</i>	<i>Compnd %</i>
<i>O K</i>	28.20S	---	47.16		---
<i>Na K</i>	2.48	+/- 0.03	2.88	Na2O	3.34
<i>Mg K</i>	6.26	+/- 0.03	6.89	MgO	10.38
<i>Si K</i>	0.87	+/- 0.02	0.83	SiO2	1.86
<i>P K</i>	2.61	+/- 0.02	2.26	P2O5	5.99
<i>S K</i>	0.76	+/- 0.02	0.63	SO3	1.89
<i>Cl K</i>	0.11	+/- 0.01	0.08	Cl	0.11
<i>K K</i>	27.00	+/- 0.08	18.48	K2O	32.53
<i>Ca K</i>	30.55	+/- 0.08	20.40	CaO	42.74
<i>Br L</i>	1.17	+/- 0.07	0.39	Br	1.17
<i>Total</i>	100.00		100.00		100.00

Project: SEMÅA-group 1

Quantitative Results for: W7 500x [Point@2] Phase5

<i>Element Line</i>	<i>Weight %</i>	<i>Weight % Error</i>	<i>Atom %</i>	<i>Formul a</i>	<i>Compnd %</i>
<i>O K</i>	32.11S	---	50.70		---
<i>Na K</i>	2.57	+/- 0.04	2.83	Na2O	3.47
<i>Mg K</i>	9.40	+/- 0.05	9.77	MgO	15.59
<i>Al K</i>	0.45	+/- 0.01	0.42	Al2O3	0.85
<i>Si K</i>	0.97	+/- 0.02	0.87	SiO2	2.07
<i>P K</i>	3.65	+/- 0.03	2.98	P2O5	8.37
<i>S K</i>	1.03	+/- 0.02	0.81	SO3	2.58
<i>Cl K</i>	0.11	+/- 0.02	0.07	Cl	0.11
<i>K K</i>	13.26	+/- 0.05	8.57	K2O	15.98
<i>Ca K</i>	36.44	+/- 0.09	22.97	CaO	50.99
<i>Total</i>	100.00		100.00		100.00

Project: SEMÅA-group 1

Quantitative Results for: W7 500x [Point@2] Phase6

<i>Element Line</i>	<i>Weight %</i>	<i>Weight % Error</i>	<i>Atom %</i>	<i>Formul a</i>	<i>Compnd %</i>
<i>O K</i>	31.63S	---	50.57		---
<i>Na K</i>	2.43	+/- 0.08	2.71	Na2O	3.28
<i>Mg K</i>	9.35	+/- 0.07	9.84	MgO	15.50
<i>Si K</i>	0.86	+/- 0.05	0.79	SiO2	1.85
<i>P K</i>	3.74	+/- 0.03	3.09	P2O5	8.56
<i>S K</i>	0.98	+/- 0.05	0.78	SO3	2.45
<i>Cl K</i>	0.13	+/- 0.02	0.09	Cl	0.13
<i>K K</i>	11.83	+/- 0.08	7.74	K2O	14.26
<i>Ca K</i>	37.40	+/- 0.13	23.87	CaO	52.33
<i>Br L</i>	1.65	+/- 0.18	0.53	Br	1.65
<i>Total</i>	100.00		100.00		100.00

Project: SEMÅA-group 1

Quantitative Results for: W7 500x [Point@2] Phase7

<i>Element Line</i>	<i>Weight %</i>	<i>Weight % Error</i>	<i>Atom %</i>	<i>Formul a</i>	<i>Compnd %</i>
<i>O K</i>	32.00S	---	51.31		---
<i>Na K</i>	1.27	+/- 0.04	1.41	Na2O	1.71
<i>Mg K</i>	6.59	+/- 0.04	6.96	MgO	10.93
<i>Al K</i>	0.30	+/- 0.01	0.29	Al2O3	0.57
<i>Si K</i>	0.93	+/- 0.02	0.85	SiO2	2.00
<i>P K</i>	5.54	+/- 0.05	4.59	P2O5	12.70
<i>S K</i>	0.87	+/- 0.03	0.69	SO3	2.16
<i>K K</i>	18.10	+/- 0.06	11.87	K2O	21.80
<i>Ca K</i>	34.40	+/- 0.09	22.02	CaO	48.14
<i>Zr L</i>	0.01	+/- 0.11	0.00	Zr	0.01
<i>Total</i>	100.00		100.00		100.00

Project: SEMÅA-group 1

Quantitative Results for: W7 500x [Point@2] Phase8

<i>Element Line</i>	<i>Weight %</i>	<i>Weight % Error</i>	<i>Atom %</i>	<i>Formul a</i>	<i>Compnd %</i>
<i>O K</i>	32.96S	---	52.01		---
<i>Na K</i>	2.41	+/- 0.06	2.64	Na2O	3.24
<i>Mg K</i>	7.00	+/- 0.05	7.27	MgO	11.60
<i>Al K</i>	0.38	+/- 0.04	0.36	Al2O3	0.72
<i>Si K</i>	1.05	+/- 0.04	0.94	SiO2	2.24
<i>P K</i>	3.22	+/- 0.05	2.63	P2O5	7.39
<i>S K</i>	3.41	+/- 0.03	2.69	SO3	8.52
<i>K K</i>	15.78	+/- 0.07	10.19	K2O	19.01
<i>Ca K</i>	33.78	+/- 0.11	21.28	CaO	47.27
<i>Total</i>	100.00		100.00		100.00

Project: SEMÅA-group 1

Quantitative Results for: W7 500x [Point@2] Phase9

<i>Element Line</i>	<i>Weight %</i>	<i>Weight % Error</i>	<i>Atom %</i>	<i>Formul a</i>	<i>Compnd %</i>
<i>O K</i>	32.39S	---	50.83		---
<i>Na K</i>	4.19	+/- 0.04	4.57	Na2O	5.65
<i>Mg K</i>	7.89	+/- 0.04	8.15	MgO	13.09
<i>Al K</i>	0.57	+/- 0.01	0.53	Al2O3	1.08
<i>Si K</i>	0.76	+/- 0.02	0.68	SiO2	1.63
<i>P K</i>	4.99	+/- 0.03	4.05	P2O5	11.44
<i>S K</i>	0.96	+/- 0.02	0.75	SO3	2.39
<i>Cl K</i>	0.11	+/- 0.02	0.08	Cl	0.11
<i>K K</i>	14.01	+/- 0.05	8.99	K2O	16.88
<i>Ca K</i>	34.12	+/- 0.09	21.37	CaO	47.74
<i>Total</i>	100.00		100.00		100.00

Project: SEMÅA-group 1

Quantitative Results for: W7 500x [Point@2] Phase10

<i>Element Line</i>	<i>Weight %</i>	<i>Weight % Error</i>	<i>Atom %</i>	<i>Formul a</i>	<i>Compnd %</i>
<i>O K</i>	30.81S	---	50.24		---
<i>Na K</i>	1.81	+/- 0.04	2.06	Na2O	2.44
<i>Mg K</i>	5.41	+/- 0.04	5.80	MgO	8.97
<i>Al K</i>	0.60	+/- 0.01	0.58	Al2O3	1.14
<i>Si K</i>	1.25	+/- 0.03	1.16	SiO2	2.68
<i>P K</i>	3.06	+/- 0.03	2.58	P2O5	7.02
<i>S K</i>	0.96	+/- 0.01	0.78	SO3	2.41
<i>Cl K</i>	0.09	+/- 0.01	0.07	Cl	0.09
<i>K K</i>	15.91	+/- 0.06	10.62	K2O	19.17
<i>Ca K</i>	40.08	+/- 0.11	26.10	CaO	56.09
<i>Total</i>	100.00		100.00		100.00

Project: SEMÅA-group 1

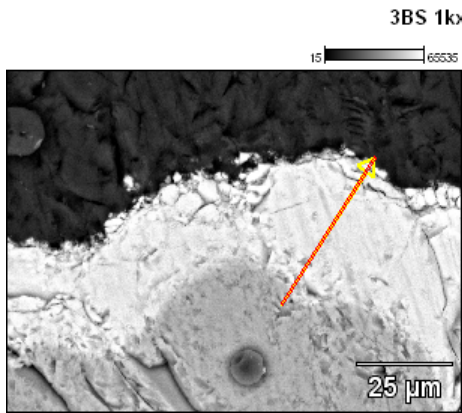
Segments

No segmentation data is available.

Combinations

<i>Combinations</i>	<i>Color</i>	<i>Area %</i>	<i>Combinations</i>
<i>Phase1</i>	Custom	10.39	C 1
<i>Phase2</i>	Custom	7.40	C 2
<i>Phase3</i>	Custom	14.40	C 4
<i>Phase4</i>	Custom	13.68	C 6
<i>Phase5</i>	Custom	16.03	C 8
<i>Phase6</i>	Custom	8.76	C 9
<i>Phase7</i>	Custom	8.46	C 10
<i>Phase8</i>	Custom	4.41	C 11
<i>Phase9</i>	Custom	9.40	C 13
<i>Phase10</i>	Custom	7.07	C 14

Project: SEMÅA-group 1



Accelerating Voltage: 20.0 kV

Magnification: 1000

3BS 1kx (1)Extract

