

# Group 1

TGA DTA

# Method

## Sample

Indium m.p. (156.6°C)

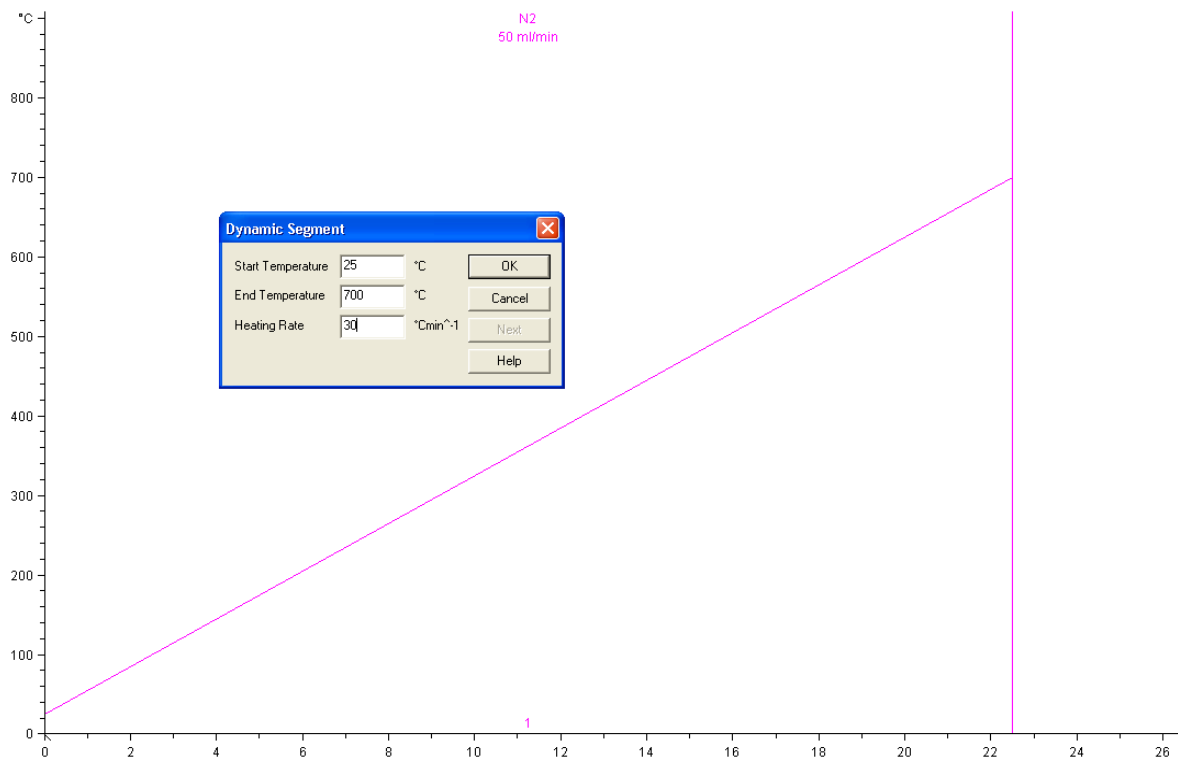
Aluminium m.p. (660.3°C)

## Alumina crucible

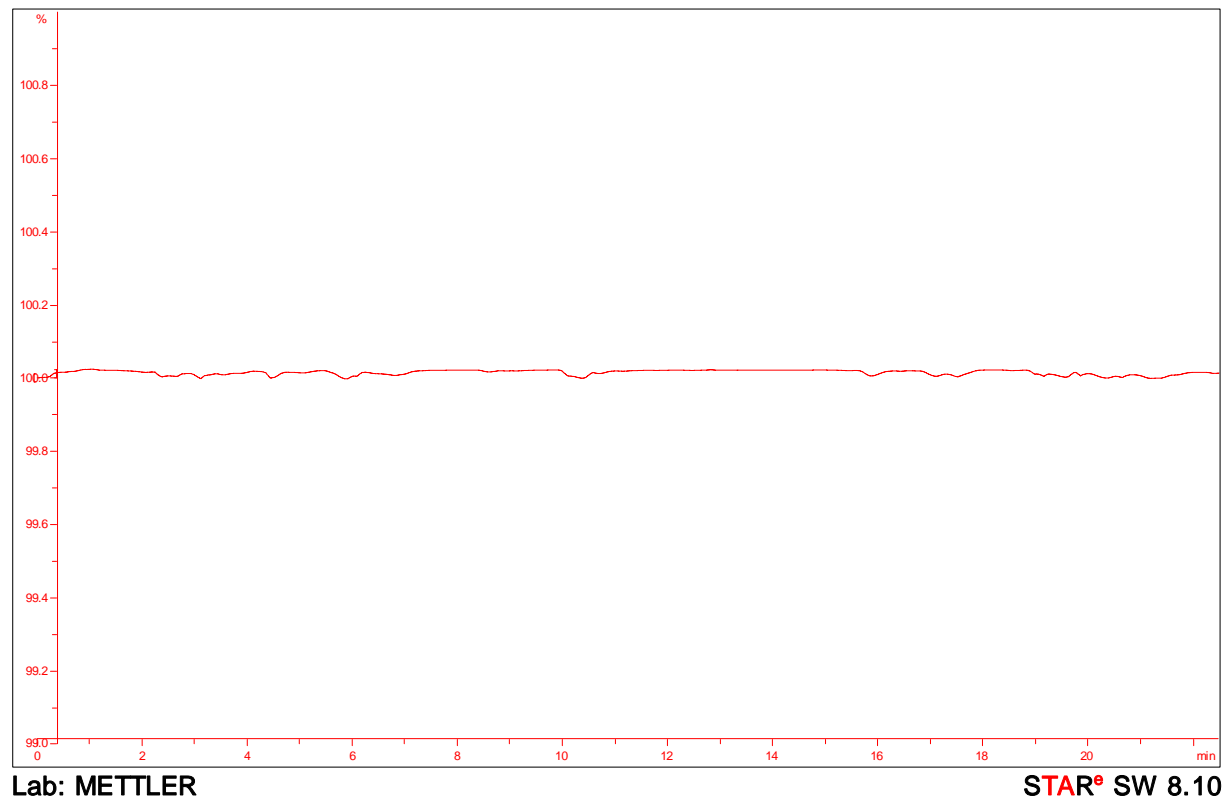
Start temp 25°C

End temp 700°C

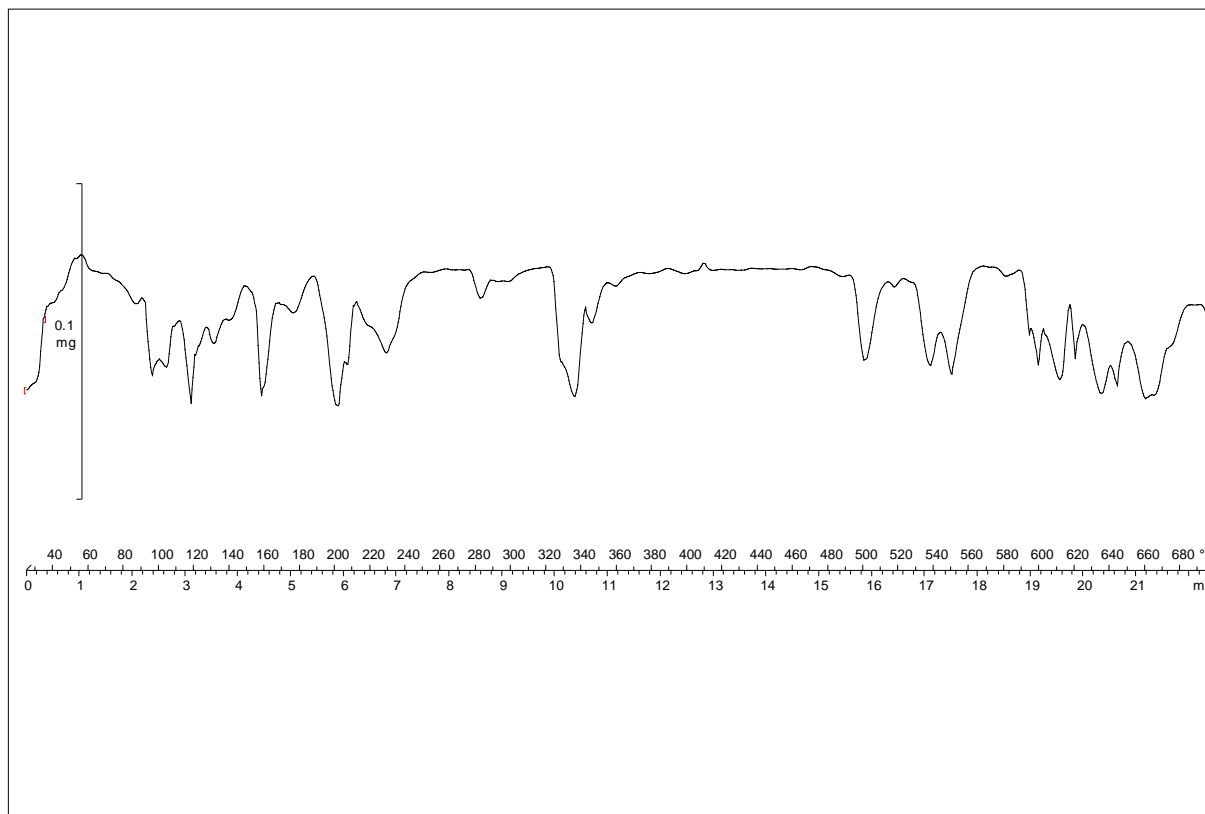
Heating rate 30°C/min



# TGA Curve



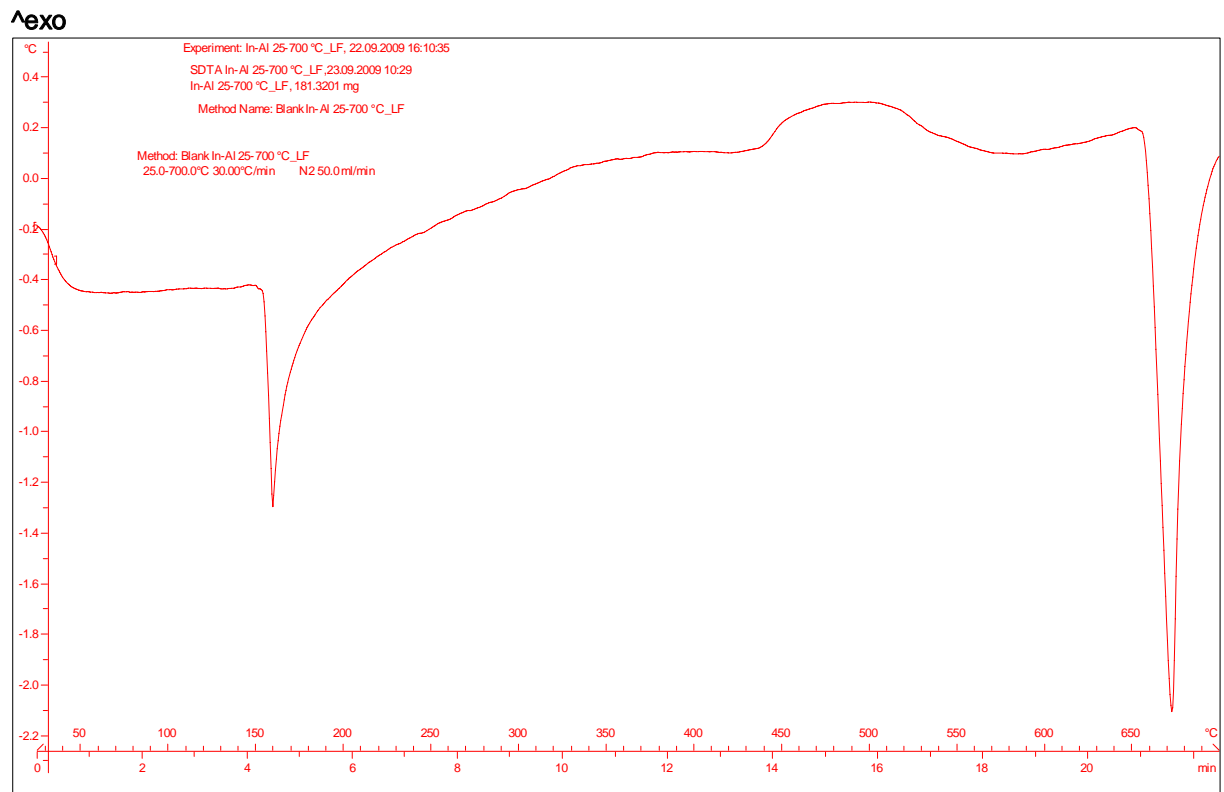
# TGA Curve



Lab: METTLER

STAR<sup>®</sup> SW 8.10

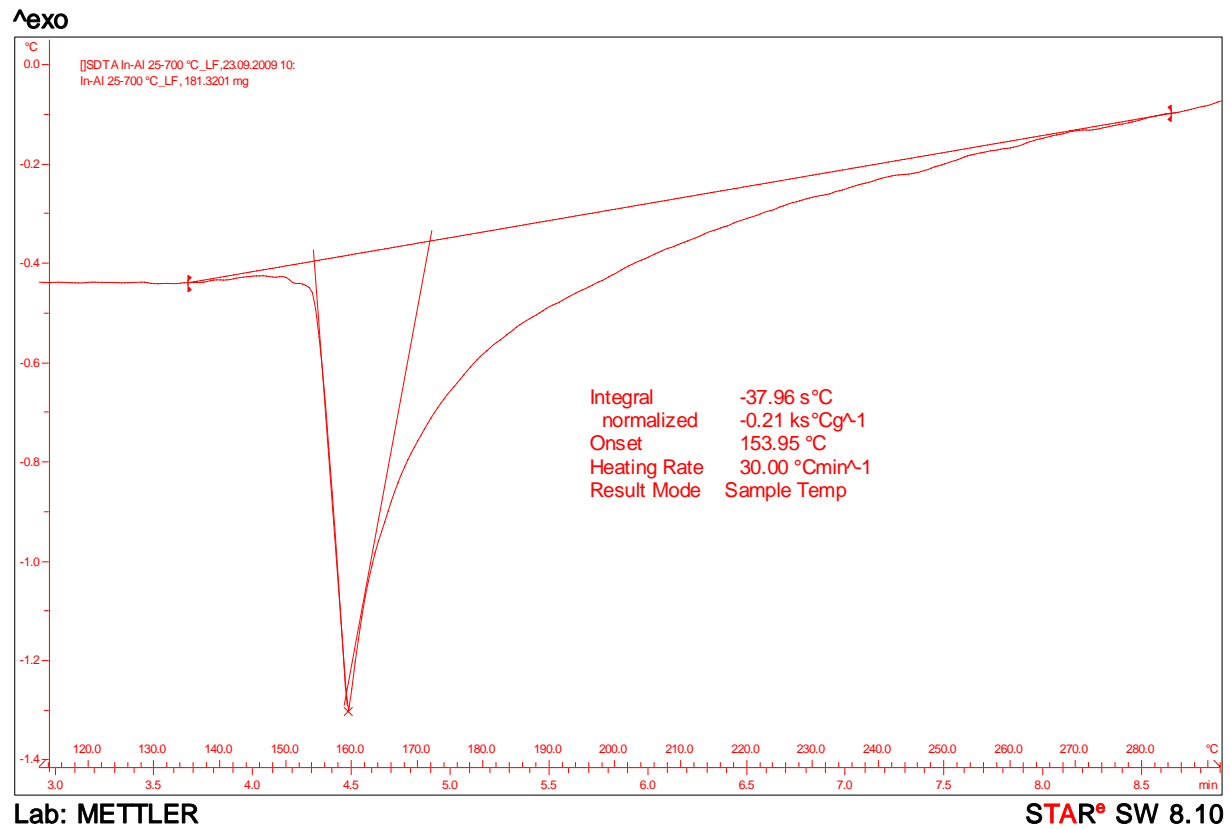
# DTA Curve



Lab: METTLER

STAR<sup>9</sup> SW 8.10

# Indium



# Alulminum

^exo

