

Globe Valve, Metal

Construction

The GEMÜ 552 pneumatically operated 2/2 way valve is a globe valve which can be used in relatively high temperature applications. It has a pneumatic plastic piston actuator and PTFE seat. The valve spindle is sealed by a self-adjusting gland packing providing low maintenance and reliable valve spindle sealing and an excellent service life. A wiper ring fitted in front of the gland packing protects the seal against contamination and damage.

Features

- Suitable for inert and corrosive* liquid and gaseous media
- Suitable for individual applications due to choice of various actuator sizes and valve body materials
- Customized design option as a control valve
- Control medium connection can be rotated through 360°
- Connection for earthing cable available
- ATEX conformity upon request

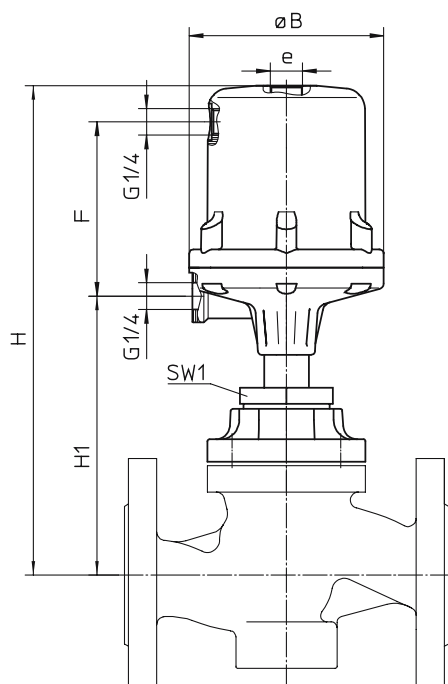
Advantages

- Extensive range of accessories such as
 - electrical position indicator
 - electro-pneumatic positioner
 - stroke limiter

* see information on working medium on page 2

Actuator dimensions GEMÜ 552 [mm]

Actuator size	ø B	e	F
1	96	M 16 x 1	86
2	168	M 22 x 1.5	149



For installation dimensions see page 3.



Working medium

Corrosive, inert, gaseous and liquid media which have no negative impact on the physical and chemical properties of the body and seal material.

Max. perm. pressure of working medium see table

Max. perm. temp. of working medium 180° C (standard)

Further versions for higher temperatures upon request

Control medium

Inert gases

Max. control pressure: Actuators 1, 4, 2: 7.0 bar

Max. perm. temperature of control medium: 60° C

Filling volume actuators 1 and 4: 0.125 NI
actuators 2: 0.625 NI

Note

The versions described in this data sheet are those included in our standard range. Further versions for higher pressures and temperatures, other seal systems upon request.

Nominal size	Working pressure*						Control pressure			K _v value [m ³ /h]	Weight [kg]		
	Control function 1 [bar]												
	Actuator size 1	Actuator size 4	Actuator size 2			Act. size 1 piston ø 70 mm	Act. size 4 piston ø 70 mm	Act. size 2 piston ø 120 mm		Act. size 1 piston ø 70 mm	Act. size 4 piston ø 70 mm	Act. size 2 piston ø 120 mm	
Material code			8	11	37, 38								
DN													
15	16	10	16	40	40	5.5 - 7.0	min. control pressure see diagram max. control pressure 7.0 bar	-	3.6	3.6	3.6	-	
20	16	10	16	40	40	5.5 - 7.0		4.0 - 7.0	6.0	4.6	4.6	-	
25	10	10	16	40	40	5.5 - 7.0		4.0 - 7.0	9.6	5.2	5.2	-	
32	7	10	16	32	32	5.5 - 7.0		4.0 - 7.0	15	7.5	7.5	10.9	
40	4.5	10	16	19	19	5.5 - 7.0		4.0 - 7.0	23	8.3	8.3	12.7	
50	3	10	10	10	10	5.5 - 7.0		5.0 - 7.0	36	11.3	11.3	15.7	
65	-	-	7	7	7	5.5 - 7.0		5.0 - 7.0	60	-	-	22.9	
80	-	-	5	5	5	-		5.0 - 7.0	89	-	-	26.5	
100	-	-	2.5	2.5	2.5	-		5.0 - 7.0	135	-	-	35	

* Values are valid for PTFE seal material (code 5)

Order data

Body configuration

Code

Straight through

D

Seat seal

Code

PTFE

5

Steel

10

Connection

Code

Flanges PN 16 (DIN 2501 - Form C), face-to-face EN 558-1 series 1 8

Flanges PN 40 (DIN 2501 - Form C), face-to-face EN 558-1 series 1 11

Control function

Code

Normally closed

1

Normally open

2

Double acting

3

Valve body material

Code

EN-GJL-250 GG 25 (cast iron) 8

GP 240 H GS-C (cast steel) 11

1.4408 Investment casting 37

1.4581 Investment casting 38

Actuator size

Code

Actuator 1 ø 70

1*

Actuator 4 ø 70

4

Actuator 2 ø 120

2*

* Preferred flow direction with incompressible liquid media to avoid "water hammer"

Order example

552

15

D

8

8

5

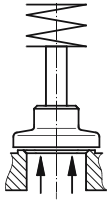
1

1

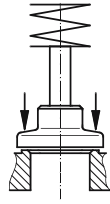
Type	552							
Nominal size		15						
Body configuration (Code)			D					
Connection (Code)				8				
Valve body material (Code)					8			
Seat seal (Code)						5		
Control function (Code)							1	
Actuator size (Code)								1

Flow direction

GEMÜ 552
actuators
1*, 2*



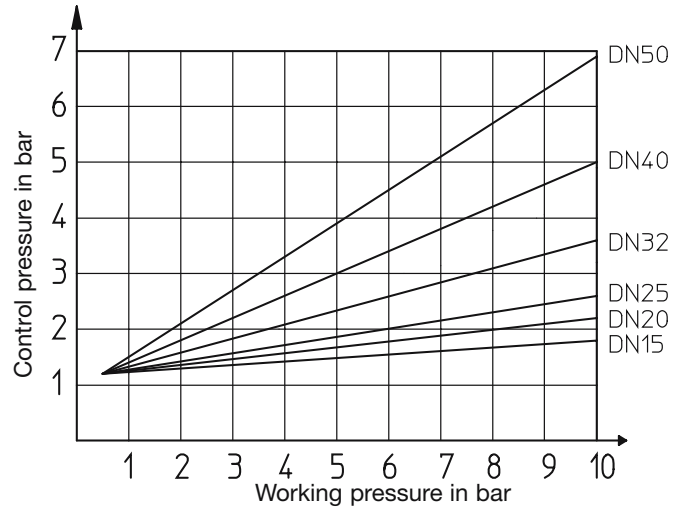
GEMÜ 552
actuator 4



* Preferred flow direction with incompressible liquid media to avoid "water hammer"

Control pressure characteristic - Actuator 4

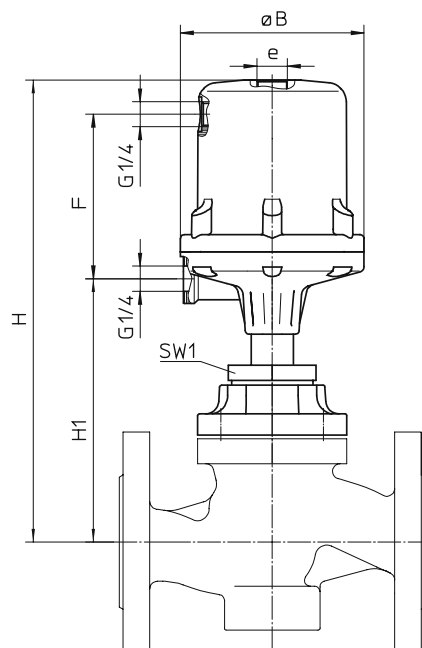
Min. control pressure / working pressure relationship



Installation dimensions GEMÜ 552 [mm]

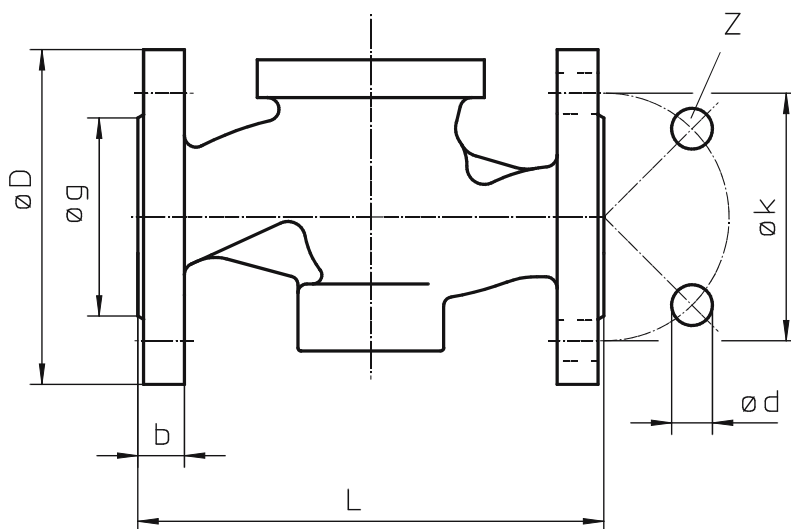
Material code	Actuator size 1				Actuator size 2					
	8	11, 38	8	11, 38	8	11, 37*, 38*	8	11, 37*, 38*		
DN	SW 1		H	H1	H	H1	H	H1	H	H1
15	36	41	236	128	238	130	-	-	-	-
20	46	41	245	137	238	130	-	-	-	-
25	46	41	251	143	238	130	-	-	-	-
32	60	60	259	151	265	157	352	176	358	182
40	60	60	264	156	265	157	357	181	358	182
50	75	75	274	166	278	170	367	191	371	195
65	75	60	-	-	-	-	377	201	406	230
80	75	75	-	-	-	-	398	222	429	253
100	75	-	-	-	-	-	419	243	454	278

* For coordination material code / nominal size see table on page 4



Body dimensions - Flanges

DN	L	Flanges PN 16 [mm] Connection code 8						Flanges PN 40 [mm] Connection code 11					
		ø D	ø k	Z	ø d	ø g	b	ø D	ø k	Z	ø d	ø g	b
15	130	95	65	4	14	45	14	95	65	4	14	45	16
20	150	105	75	4	14	58	16	105	75	4	14	58	18
25	160	115	85	4	14	68	16	115	85	4	14	68	18
32	180	140	100	4	18	78	16	140	100	4	18	78	18
40	200	150	110	4	18	88	18	150	110	4	18	88	18
50	230	165	125	4	18	102	20	165	125	4	18	102	20
65	290	185	145	4	18	122	20	185	145	8	18	122	22
80	310	200	160	8	18	138	22	200	160	8	18	138	24
100	350	220	180	8	18	158	24	235	190	8	22	162	24



Overview of metal globe valve bodies for GEMÜ 552

Material code	8	11	38	37
Connection code	8	11	11	8
DN 15	X	X	X	-
DN 20	X	X	X	-
DN 25	X	X	X	-
DN 32	X	X	X	-
DN 40	X	X	X	-
DN 50	X	X	X	-
DN 65	X	X	-	X
DN 80	X	X	-	X
DN 100	X	X	-	X

For further globe valves, accessories and other products, please see our Product Range brochure and Price List. Contact GEMÜ.



GEMÜ® VALVES, ACTUATORS
AND CONTROL SYSTEMS